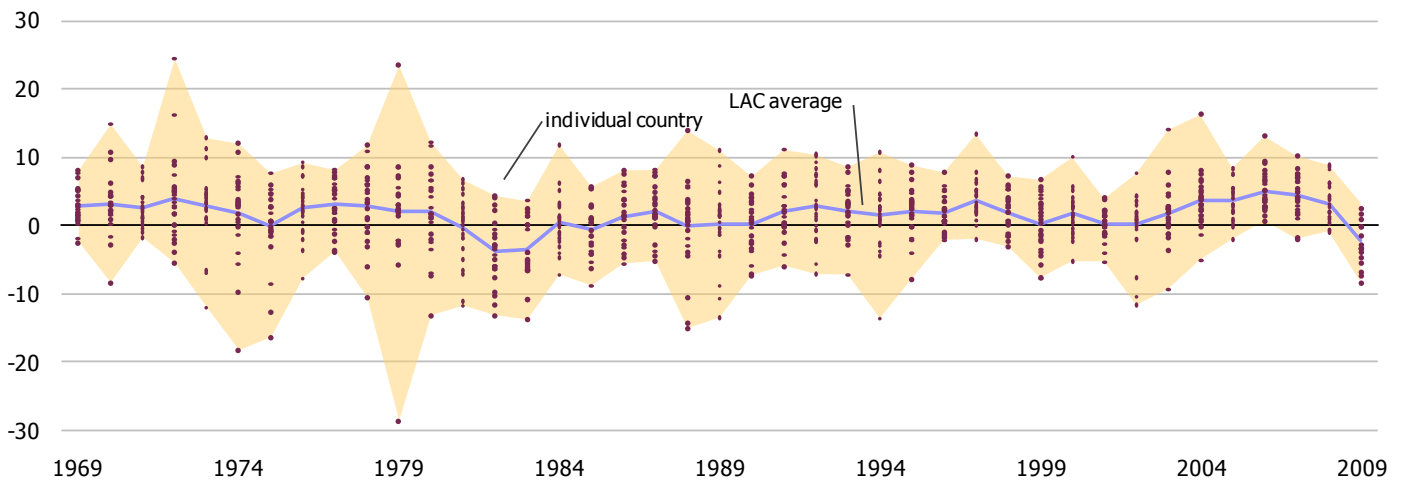


Per capita GDP Growth in LAC

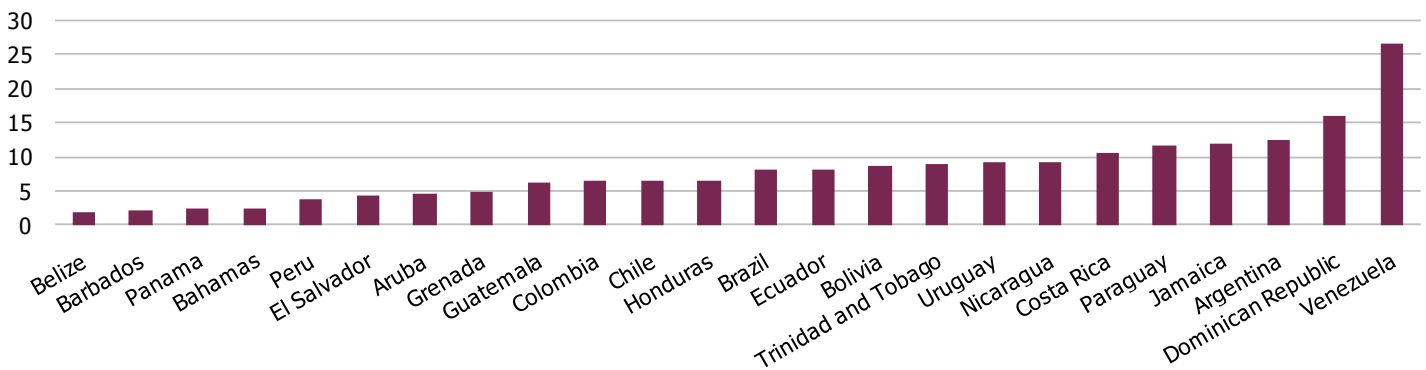
Annual percent



For individual country data, visit the LAC Databook's website at <http://lac.eads.usaidallnet.gov>.

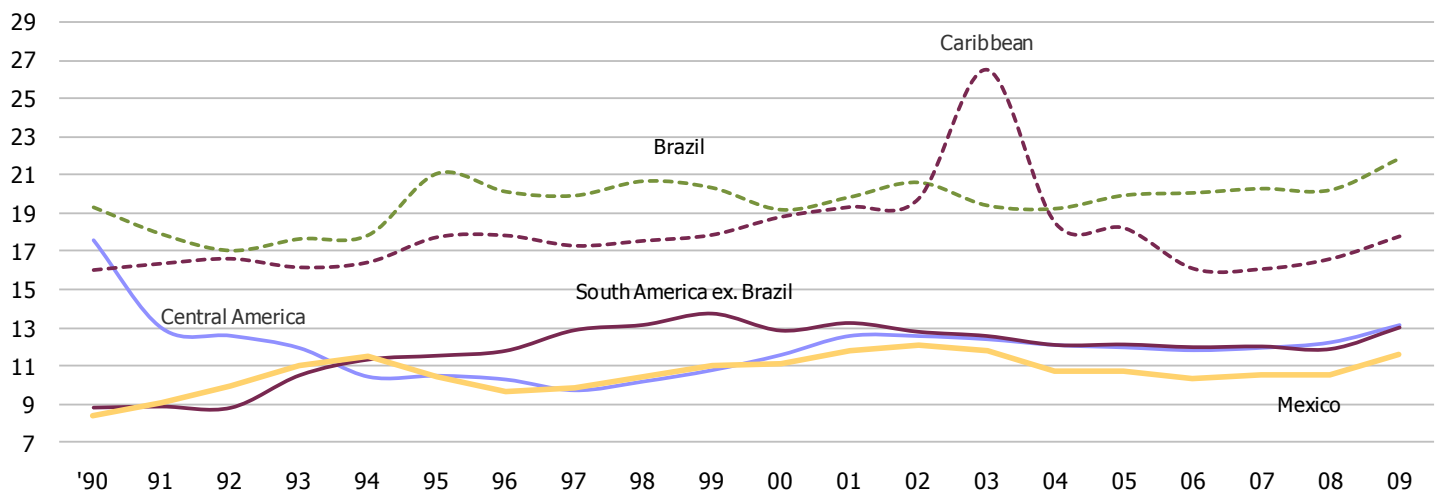
Average Annual Inflation, 2002-2008

Percent growth of GDP deflator



Government Share of GDP

Percent

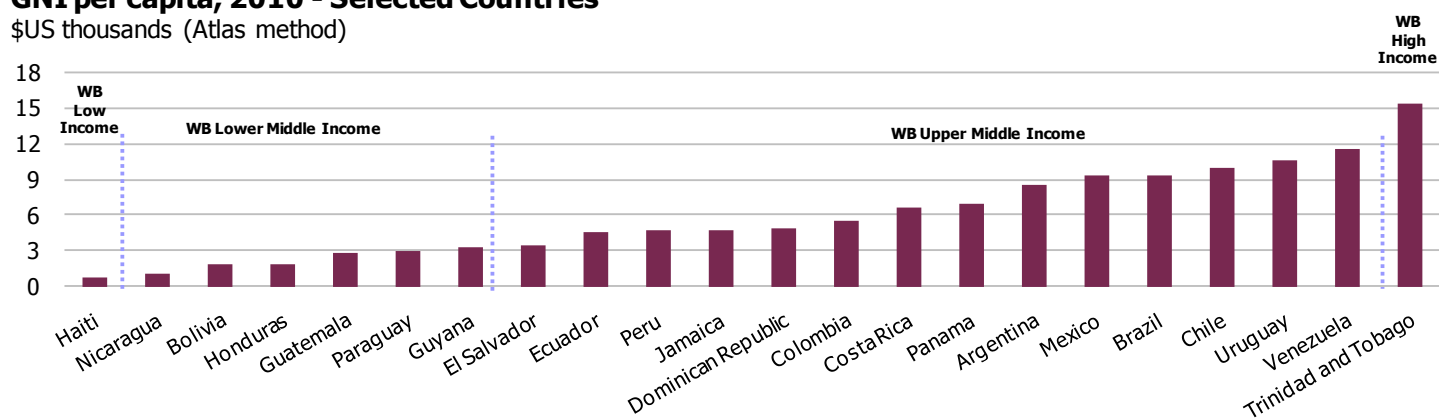


7.1 | Gross National Income - 2010

	Gross National Income (GNI)			per capita GNI	
	Atlas method US\$m	Current US\$m	Current PPP US\$m	Atlas method US\$	Current PPP US\$
Antigua and Barbuda	939	948	1,362	10,610	15,380
Belize	1,288	1,303	2,059	3,740	5,970
Dominica	367	364	635	4,960	8,580
Dominican Republic	49,662	49,789	88,934	4,860	8,700
Grenada	580	583	789	5,560	7,560
Guyana	2,491	2,561	2,689	3,270	3,530
Haiti	6,464	6,731	11,052	650	1,110
Jamaica	12,892	13,305	20,139	4,750	7,430
St. Kitts and Nevis	499	507	658	9,980	13,170
St. Lucia	865	858	1,482	4,970	8,520
St. Vincent and Grenadines	530	539	903	4,850	8,260
Trinidad and Tobago	20,664	19,198	32,243	15,380	24,000
Caribbean	97,239	96,687	162,946	6,132	9,351
Costa Rica	30,518	33,001	50,493	6,580	10,880
El Salvador	20,820	20,815	39,580	3,360	6,390
Guatemala	39,345	39,990	66,217	2,740	4,610
Honduras	14,302	14,802	28,420	1,880	3,730
Nicaragua	6,282	6,223	15,205	1,080	2,610
Panama	24,531	24,916	45,412	6,990	12,940
Central America	135,798	139,747	245,327	3,772	6,860
Argentina	343,636	353,713	616,129	8,450	15,150
Bolivia	17,982	18,926	45,746	1,790	4,560
Brazil	1,830,392	2,049,172	2,128,956	9,390	10,920
Chile	170,284	188,032	237,959	9,940	13,890
Colombia	255,290	276,093	416,538	5,510	9,000
Ecuador	62,106	64,195	127,758	4,510	9,270
Paraguay	19,008	19,497	35,096	2,940	5,430
Peru	138,978	147,315	263,668	4,710	8,940
Uruguay	35,557	39,162	46,609	10,590	13,890
Venezuela	334,113	387,566	344,499	11,590	11,950
South America	3,207,347	3,543,671	4,262,956	6,942	10,300
Mexico	1,012,316	1,025,199	1,629,184	9,330	15,010
LAC	4,452,701	4,805,303	6,300,414	6,033	9,358

GNI per capita, 2010 - Selected Countries

\$US thousands (Atlas method)



7.2 | Gross Domestic Product - 2010

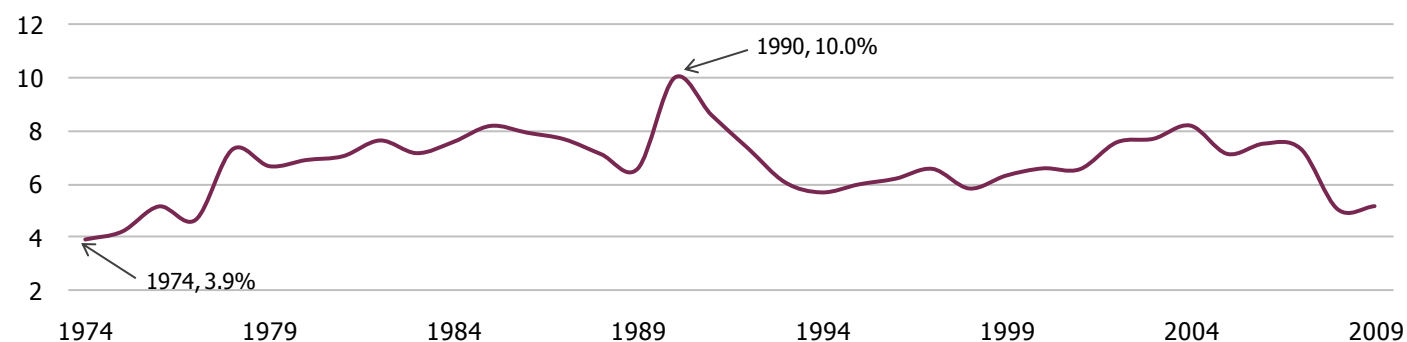
	Gross Domestic Product						Per capita GDP				
	Growth Rate 2009-2010						Growth Rate 2009-2010				
	Current US\$m	Current PPP US\$m	Nominal annual growth (%)	Real annual growth (%)	Annual PPP growth (%)	Current US\$	Current PPP US\$	Nominal annual growth (%)	Real annual growth (%)	Annual PPP growth (%)	
Antigua and Barbuda	1,105	1,425	-1.2	-4.1	-3.2	12,737	16,573	-2.4	-5.2	-4.2	
Bahamas	7,538	8,921	2.2	0.5	1.5	24,283	25,895	1.2	-0.6	0.3	
Barbados	3,963	6,227	1.7	-0.5	0.5	13,873	22,512	1.4	-0.7	0.2	
Belize	1,396	2,651	3.3	2.0	3.0	4,438	7,895	1.2	-0.2	0.7	
Dominica	376	758	3.9	1.0	1.9	5,164	10,416	3.6	1.0	1.9	
Dominican Republic	51,626	87,249	10.5	7.8	8.8	5,255	8,836	9.0	5.8	6.9	
Grenada	674	1,098	4.5	-1.4	-0.5	6,251	10,657	3.9	-1.4	-0.5	
Guyana	2,215	5,379	9.4	3.6	4.6	2,959	6,964	10.1	3.3	4.3	
Haiti	6,632	11,477	-0.0	-5.1	-4.1	687	1,165	1.3	-4.4	-3.5	
Jamaica	13,694	23,716	11.2	-1.1	-0.2	4,810	8,727	10.4	-1.8	-0.9	
St. Kitts and Nevis	531	684	1.0	-1.5	-0.6	10,642	12,415	0.1	-3.4	-2.5	
St. Lucia	985	1,798	2.7	0.8	1.8	6,121	10,350	2.3	-0.4	0.5	
St. Vincent and Grenadines	561	1,069	-1.1	-2.3	-1.3	5,383	9,970	-0.7	-2.4	-1.4	
Suriname	3,682	4,711	13.2	4.4	5.4	6,745	8,924	11.6	3.2	4.2	
Trinidad and Tobago	20,590	26,103	4.9	0.0	1.0	16,758	.	5.0	.	.	
Caribbean	115,568	183,266	4.4	0.3	1.2	8,407	11,521	3.9	-0.5	0.4	
Costa Rica	35,780	51,166	22.4	4.2	5.2	7,923	11,216	20.7	2.9	3.9	
El Salvador	21,700	43,567	2.8	0.7	1.7	3,586	7,430	2.5	0.1	1.0	
Guatemala	41,471	70,150	10.1	2.6	3.6	3,060	4,885	7.8	0.1	1.1	
Honduras	15,347	33,631	8.6	2.8	3.8	1,921	4,417	6.5	0.8	1.8	
Nicaragua	6,551	17,711	5.4	4.5	5.5	1,169	3,045	4.2	3.2	4.2	
Panama	26,778	44,360	11.2	7.5	8.5	7,851	12,578	9.6	5.6	6.6	
Central America	147,627	260,585	10.1	3.7	4.7	4,252	7,262	8.6	2.1	3.1	
Argentina	370,269	642,402	19.4	9.2	10.2	8,956	15,854	18.1	8.1	9.2	
Bolivia	19,373	47,882	10.9	4.2	5.2	1,948	4,592	9.0	2.2	3.2	
Brazil	2,090,314	2,172,058	30.6	7.5	8.5	10,394	11,239	29.0	6.5	7.5	
Chile	203,323	257,884	26.2	5.3	6.3	12,141	15,002	25.1	4.0	5.0	
Colombia	285,511	435,367	23.2	4.3	5.3	6,459	9,566	21.7	3.1	4.1	
Ecuador	58,910	114,984	13.2	3.2	4.2	3,983	7,776	11.6	1.7	2.7	
Paraguay	18,475	33,306	30.0	15.3	16.4	2,898	5,202	28.2	13.0	14.1	
Peru	152,830	275,720	20.4	8.8	9.8	5,279	9,330	19.1	7.1	8.2	
Uruguay	40,272	47,986	28.6	8.5	9.5	12,200	14,296	28.3	8.1	9.1	
Venezuela	290,678	345,210	-10.7	-1.9	-1.0	10,678	11,829	-12.1	-3.8	-2.9	
South America	3,529,955	4,372,799	19.2	6.4	7.4	7,494	10,469	17.8	5.0	6.0	
Mexico	1,039,121	1,567,470	17.8	5.5	6.5	9,239	14,430	16.5	4.5	5.5	
LAC	4,832,271	6,384,120	10.5	3.0	4.0	7,368	10,451	9.5	1.9	2.9	

7.3 | Debt

	External Debt (US\$m)		Use of IMF Credit (US\$m)		Long-term Debt (US\$m)		Total Debt Service (US\$m)		Total Debt Service (% of GNI)		Total Debt Service (% of exports)	
	2004	2009	2004	2009	2004	2009	2004	2009	2004	2009	2004	2009
Belize	963	1,092	0	7	963	1,076	334	100	35.4	.	60.9	13.6
Dominican Republic	7,127	11,003	204	767	5,981	8,557	792	1,326	3.9	2.9	8.1	12.1
Grenada	432	531	9	23	347	462	29	20	7.3	3.5	14.5	10.9
Guyana	1,363	1,036	88	58	1,143	781	48	19	7.1	1.0	6.4	.
Haiti	1,311	1,244	11	166	1,225	1,078	100	45	.	.	19.2	4.6
Jamaica	6,451	10,959	1	0	5,352	9,905	849	1,450	8.9	12.7	20.4	33.9
St. Kitts and Nevis	314	227	0	3	313	222	46	41	12.9	8.1	23.0	20.8
St. Lucia	352	416	0	11	243	344	24	44	3.2	5.1	5.0	8.2
St. Vincent and Grenadines	227	209	0	6	223	202	19	31	4.9	5.6	10.2	14.8
Caribbean	18,539	26,717	313	1,042	15,789	22,627	2,240	3,077	10.4	5.5	18.6	14.9
Costa Rica	5,705	8,070	0	0	4,033	5,728	912	1,229	5.1	4.3	10.4	9.6
El Salvador	8,517	11,384	0	0	6,737	9,270	999	1,223	6.5	6.0	21.9	25.2
Guatemala	9,716	13,801	0	0	8,100	12,575	1,193	1,686	5.0	4.7	18.6	18.4
Honduras	6,065	3,675	195	32	5,446	3,326	321	414	3.8	3.0	6.1	6.8
Nicaragua	5,016	4,420	248	150	4,271	3,554	130	492	3.0	8.3	7.8	17.2
Panama	8,987	12,418	36	0	8,951	12,418	1,383	982	10.5	4.3	14.3	5.5
Central America	44,006	53,767	479	182	37,539	46,871	4,937	6,026	5.7	5.1	13.2	13.8
Argentina	162,379	120,183	14,091	0	121,827	100,646	12,828	12,127	8.9	4.1	29.4	17.3
Bolivia	6,222	5,745	307	0	5,642	5,191	519	590	6.2	3.5	19.7	14.4
Brazil	219,786	276,932	25,029	0	169,489	237,143	53,700	44,317	8.3	2.8	47.8	23.4
Chile	43,774	71,646	0	0	36,322	54,170	9,562	15,283	10.9	10.0	23.6	22.6
Colombia	37,911	52,223	0	0	32,791	48,113	7,688	8,840	6.8	3.9	38.2	22.4
Ecuador	17,449	12,930	290	0	15,295	11,511	3,746	6,369	12.2	11.4	41.5	40.8
Paraguay	3,607	4,323	0	0	2,941	3,571	478	444	7.0	3.2	13.1	6.1
Peru	31,550	29,593	104	0	28,675	24,863	2,784	3,783	4.2	3.1	18.4	11.8
Uruguay	11,728	12,159	2,684	0	8,160	11,035	1,346	1,906	10.3	6.2	29.1	21.0
Venezuela	38,792	54,503	0	0	30,947	38,494	7,366	3,964	6.8	1.2	17.2	6.4
South America	573,197	640,237	42,505	0	452,089	534,737	100,019	97,621	8.2	4.9	27.8	18.6
Mexico	171,162	192,008	0	0	162,072	168,672	50,480	39,953	6.7	4.6	24.3	16.0
LAC	806,904	912,728	43,297	1,224	667,489	772,907	157,677	146,678	8.2	5.1	21.1	16.2

LAC Region Average Debt Service

Percent of GNI



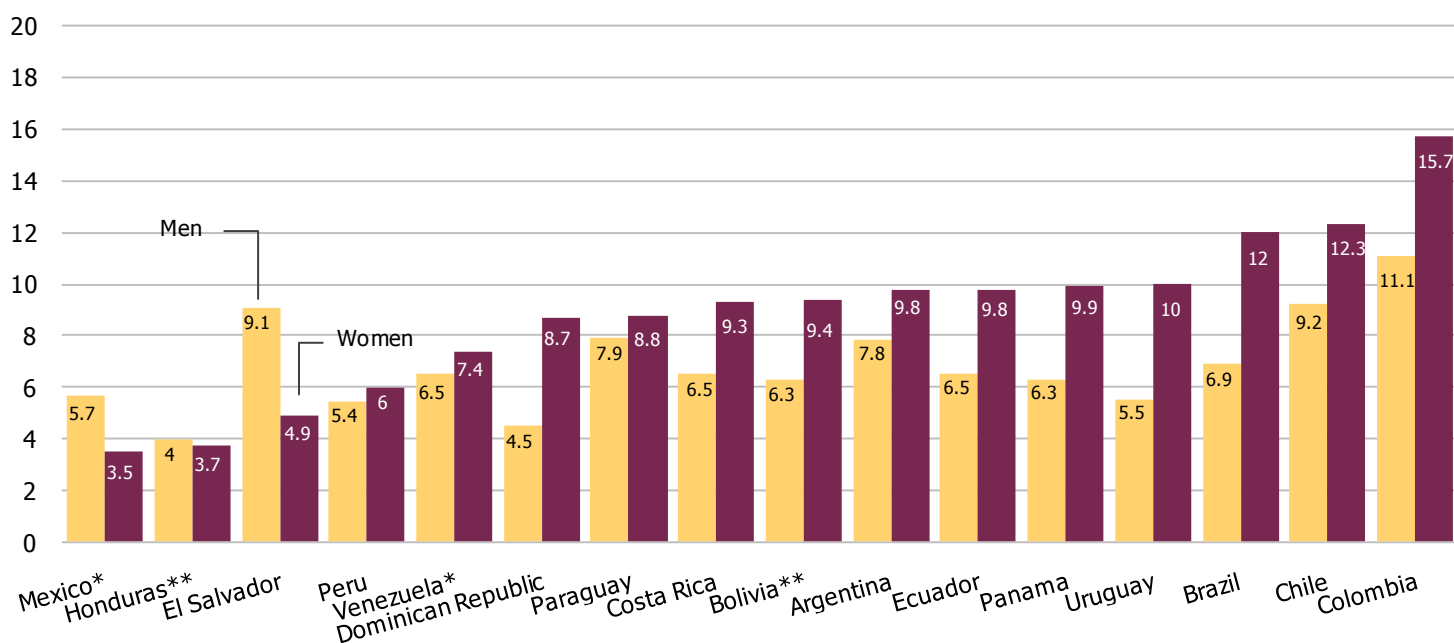
7.4 | Unemployment Rates percent of labor force

	1980	1990	1999	2000	2001	2002	2003	2004	2005	2006	2007	2008	2009	2010
Caribbean														
Bahamas	.	.	7.8	.	6.9	9.1	10.8	10.2	10.2	7.6	7.9	8.7	14.2	.
Barbados	.	14.7	10.4	9.2	9.9	10.3	11	9.8	9.1	8.7	7.4	8.1	10	10.6
Belize	.	.	12.8	11.1	9.1	10	12.9	11.6	11	9.4	8.5	8.2	13.1	.
Dominican Republic	.	.	13.8	13.9	15.6	16.1	16.7	18.4	17.9	16.2	15.6	14.1	14.9	14.4
Jamaica	.	15.3	15.7	15.5	15	14.2	11.4	11.7	11.3	10.3	9.8	10.6	11.4	13
Suriname	.	15.8	14	14	14	10	7	8.4	11.2	12.1
Trinidad and Tobago	.	20.1	13.2	12.2	10.8	10.4	10.5	8.4	8	6.2	5.6	4.6	5.3	6.7
Central America														
Costa Rica	6	5.4	6.2	5.3	5.8	6.8	6.7	6.7	6.9	6	4.8	4.8	8.4	7.1
El Salvador	.	10	6.9	6.5	7	6.2	6.2	6.5	7.3	5.7	5.8	5.5	7.1	.
Guatemala	5.4	5.2	4.4
Honduras	8.8	7.8	5.3	.	5.9	6.1	7.6	8	6.5	4.9	4	4.1	4.9	6.4
Nicaragua	.	7.6	10.7	7.8	11.3	11.6	10.2	9.3	7	7	6.9	8	10.5	.
Panama	9.9	20	13.6	15.2	17	16.5	15.9	14.1	12.1	10.4	7.8	6.5	7.9	7.7
South America														
Argentina	2.6	7.4	14.3	15.1	17.4	19.7	17.3	13.6	11.6	10.2	8.5	7.9	8.7	7.8
Bolivia	.	7.3	7.2	7.5	8.5	8.7	9.2	6.2	8.1	8	7.7	6.7	7.9	6.5
Brazil	6.3	4.3	7.6	7.1	6.2	11.7	12.3	11.5	9.8	10	9.3	7.9	8.1	6.8
Chile	10.4	7.8	10.1	9.7	9.9	9.8	9.5	10	9.2	7.7	7.1	7.8	9.7	8.3
Colombia	10	10.5	19.4	17.3	18.2	18.1	17.1	15.8	14.3	13.1	11.4	11.5	13	12.4
Ecuador	5.7	6.1	14.4	9	10.4	8.6	9.8	9.7	8.5	8.1	7.4	6.9	8.5	8
Paraguay	4.1	6.6	9.4	10	10.8	14.7	11.2	10	7.6	8.9	7.2	7.4	8.2	7.8
Peru	7.1	8.3	9.2	8.5	9.3	9.4	9.4	9.4	9.6	8.5	8.4	8.4	8.4	8
Uruguay	.	8.5	11.3	13.6	15.3	17	16.9	13.1	12.2	11.4	9.6	7.9	7.7	7.1
Venezuela	6	10.4	15	13.9	13.3	15.8	18	15.3	12.4	10	8.4	7.3	7.8	8.6
LAC														
Mexico	4.5	2.7	3.7	3.4	3.6	3.9	4.6	5.3	4.7	4.6	4.8	4.9	6.7	6.5

Urban Open Unemployment in 2009 by Gender

Percent

*Indicates 2008 ** Indicates 2007



7.5 | Real Average Wages
average annual indices: 2000 = 100

	1980	1990	1999	2000	2001	2002	2003	2004	2005	2006	2007	2008	2009
Costa Rica	94.4	81.5	99.2	100	101.0	105.1	105.5	102.8	100.8	102.4	103.8	101.7	109.5
Guatemala	69.2	60.1	96.3	100	100.5	99.6	100.0	97.8	93.9	92.9	91.4	89.0	89.1
Nicaragua	362.2	75.8	100.0	100	101.0	104.5	106.5	104.2	104.5	105.9	104.0	100.1	106.6
Panama	95.2	98.9	105.6	100	98.8	95.8	95.3	94.5	93.4	95.3	96.5	95.9	95.5

Central America

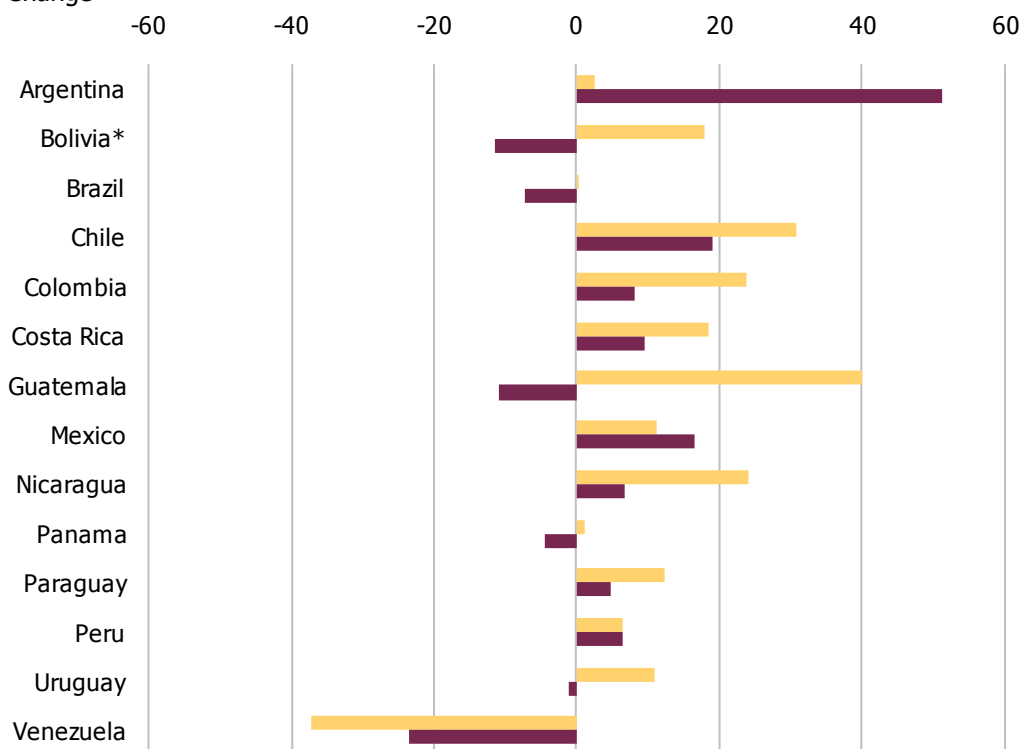
Argentina	126.8	97.5	97.7	100	98.8	79.6	89.3	97.5	104.8	114.1	124.5	135.4	151.3
Bolivia	.	82.0	98.6	100	105.8	109.3	111.1	114.1	110.0	101.2	95.5	88.4	.
Brazil	.	99.7	101.1	100	95.1	93.1	84.9	85.5	85.2	88.2	89.5	91.4	92.6
Chile	66.2	69.3	98.6	100	101.7	103.7	104.6	106.5	108.5	110.6	113.7	113.5	118.9
Colombia	64.9	76.3	96.3	100	99.7	102.7	102.0	103.7	105.3	109.3	109.0	106.9	108.0
Ecuador	.	75.6	104.9	100	111.9	124.1
Paraguay	89.6	87.8	98.7	100	101.4	96.3	95.6	97.2	98.2	98.8	101.1	100.4	104.7
Peru	289.8	93.7	99.3	100	99.1	103.7	105.3	106.5	104.4	105.7	103.8	106.1	106.4
Uruguay	96.7	89.1	101.3	100	99.7	89.0	77.9	77.9	81.5	85.0	89.0	92.2	98.9
Venezuela	.	137.2	96.1	100	106.9	95.1	78.4	78.6	80.7	84.8	85.8	81.9	76.5

South America

Mexico	114.1	88.9	94.3	100	106.7	108.7	110.1	110.4	110.7	112.3	113.4	115.9	116.6
--------	-------	------	------	-----	-------	-------	-------	-------	-------	-------	-------	-------	-------

LAC

Total Wage Growth
 Percentage Change



■ 1990 to 2000 ■ 2000 to 2009 * indicates most recent year = 2008

7.6 | Argentina selected economic data

	2000	2001	2002	2003	2004	2005	2006	2007	2008	2009	2010
Population											
Population (000)	37,336	37,694	37,999	38,337	38,742	39,181	39,614	40,049	40,482	40,914	41,343
Growth Rate (%)	1.1	0.8	0.8	1.0	1.2	1.1	1.1	1.1	1.1	1.1	1.0
National Accounts											
GDP, current prices (m. LCU)	284,410	268,964	311,524	375,617	447,234	531,355	653,742	811,176	1,031,124	1,144,613	1,442,656
GDP constant (m. LCU)	276,173	263,997	235,236	256,302	279,142	304,763	330,565	359,126	383,504	386,705	422,130
Real GDP Growth Rate (%)	-0.8	-4.4	-10.9	9.0	8.9	9.2	8.5	8.6	6.8	0.8	9.2
GDP per capita (constant LCU)	7,508	7,105	6,270	6,768	7,302	7,897	8,482	9,125	9,649	9,635	10,418
Gross Capital Formation (m. LCU)	46,020	38,099	37,387	56,903	85,800	114,132	152,838	196,622	240,486	239,637	.
Employment and Wages											
Unemployment Rate (%)	15.0	18.3	17.9	16.1	12.6	10.6	10.1	8.5	7.8	8.6	.
Real Average Wage (2000=100)	100	98.8	79.6	89.3	97.5	104.8	114.1	124.5	135.4	151.3	.
Prices											
GDP Deflator (2005=100)	59	58.3	76.1	84.1	91.9	100.0	113.4	129.6	154.8	169.7	195.8
Annual Change (%)	1.0	-1.1	30.6	10.5	9.2	8.8	13.4	14.3	19.5	9.6	15.4
Consumer Price Index (2005=100)	62	61.2	77.0	87.4	91.2	100.0	110.9	120.7	131.1	139.3	154.3
Annual Change (%)	-0.9	-1.1	25.9	13.4	4.4	9.6	10.9	8.8	8.6	6.3	10.8
Interest Rate: Deposit Rate, (annual %)	8.3	16.2	39.2	10.2	2.6	3.8	6.4	8.0	11.0	11.6	9.2
Interest Rate: Lending Rate, (annual %)	11.1	27.7	51.7	19.1	6.8	6.2	8.6	11.1	19.5	15.7	10.6
Balance of Payments (millions of US\$)											
Current Account Balance	-8,981	-3,780	8,767	8,140	3,212	5,275	7,768	7,355	6,755	8,469	3,573
Exports, f.o.b.	26,341	26,543	25,651	29,939	34,576	40,387	46,546	55,980	70,019	55,669	68,500
Imports, f.o.b.	-23,889	-19,158	-8,473	-13,134	-21,311	-27,300	-32,588	-42,525	-54,596	-37,141	-53,810
Trade Balance	2,452	7,385	17,178	16,805	13,265	13,087	13,958	13,456	15,423	18,528	14,690
Services, net	-4,284	-3,863	-1,460	-1,193	-1,331	-992	-501	-513	-1,284	-1,059	-744
Income, net	-7,548	-7,727	-7,491	-7,976	-9,283	-7,304	-6,150	-5,941	-7,553	-9,012	-10,015
Current Transfers, net	399	424	540	504	561	484	459	353	170	12	-358
Capital Account Balance	106	157	406	70	196	89	97	121	181	74	66
Financial Account Balance	9,071	6,488	-7,294	-6,823	-3,997	-5,520	-9,443	-7,542	-8,285	-10,750	-3,512
Direct Investment, net	9,517	2,005	2,776	878	3,449	3,954	3,099	4,969	8,335	3,307	5,247
Portfolio Investment, net	-2,584	-9,503	-4,640	-7,758	-9,416	-387	7,823	7,069	-8,028	-3,149	8,636
Other Investment, net	1,697	1,903	-9,945	3,638	7,289	-231	-16,700	-5,917	-7,647	-8,313	-13,950
Reserve Assets	440	12,083	4,516	-3,581	-5,319	-8,857	-3,539	-13,098	-9	-1,346	-4,157
Foreign exchange	895	11,361	4,606	-2,673	-4,685	-5,155	-6,928	-12,784	-13	1,744	-3,452
Errors and Omissions	-196	-2,864	-1,879	-1,387	589	157	1,579	66	1,349	2,207	-127
Debt											
External Public Debt Outstanding (US\$m)	81,633	82,994	87,313	94,062	98,016	54,225	60,754	68,029	68,627	72,923	.
Debt Service/Exports (%)	69.4	41.4	16.5	38.1	29.4	19.4	36.2	12.3	8.8	17.3	.
Government Finance (millions of local currency)											
Revenue	43,189	38,388	44,286	60,632	73,089	88,879	112,567	147,465	200,099	239,857	.
Current revenue	42,768	38,231	44,182	60,436	72,429	87,772	111,371	146,723	199,171	238,094	.
Capital revenue	421	156	103	196	660	1,107	1,197	742	928	1,763	.
Expense	49,238	49,116	46,140	59,703	64,275	86,839	105,893	142,421	192,974	251,612	.
Current expenditure	46,250	46,667	43,936	56,635	57,671	76,041	88,691	124,394	169,748	220,643	.
Capital expenditure	2,988	2,449	2,203	3,068	6,604	10,798	17,202	18,027	23,226	30,969	.
Overall primary balance	3,598	59	4,722	7,915	14,526	12,267	17,959	22,223	28,710	14,181	.
Overall fiscal balance	-6,049	-10,729	-1,854	929	8,814	2,039	6,675	5,044	7,125	-11,755	.

7.7 | Belize

selected economic data

	2000	2001	2002	2003	2004	2005	2006	2007	2008	2009	2010
Population											
Population (000)	248	255	261	268	275	281	288	295	301	308	315
Growth Rate (%)	2.7	2.6	2.6	2.5	2.4	2.4	2.3	2.3	2.2	2.2	2.1
National Accounts											
GDP, current prices (m. LCU)	1,664	1,744	1,865	1,976	2,113	2,230	2,426	2,554	2,717	2,702	2,793
GDP constant (m. LCU)	1,664	1,747	1,836	2,007	2,100	2,163	2,264	2,291	2,378	2,377	2,424
Real GDP Growth Rate (%)	13.1	5.0	5.1	9.3	4.6	3.0	4.7	1.2	3.8	-0.0	2.0
GDP per capita (constant LCU)	6,662	6,788	6,922	7,332	7,429	7,413	7,552	7,291	7,401	7,237	7,220
Gross Capital Formation (m. LCU)	477	438	421	375	373	413	451	493	692	.	.
Employment and Wages											
Unemployment Rate (%)	.	9.1	10.0	.	.	11.0	9.4	8.5	8.2	.	.
Prices											
GDP Deflator (2005=100)	97	96.9	98.6	95.5	97.6	100.0	104.0	108.1	111.3	110.1	111.1
Annual Change (%)	0.6	-0.1	1.7	-3.1	2.2	2.4	4.0	4.0	2.9	-1.1	0.9
Consumer Price Index (2005=100)	88	89.2	91.2	93.6	96.5	100.0	104.2	106.6	113.5	112.2	113.2
Annual Change (%)	0.6	1.2	2.2	2.6	3.1	3.6	4.2	2.3	6.4	-1.1	0.9
Interest Rate: Deposit Rate, (annual %)	7.7	6.4	6.3	6.9	7.4	7.7	8.2	8.3	8.5	8.4	7.8
Interest Rate: Lending Rate, (annual %)	16.0	15.5	14.8	14.3	13.9	14.3	14.2	14.3	14.1	14.1	13.9
Balance of Payments (millions of US\$)											
Current Account Balance	-162	-190	-165	-184	-155	-151	-25	-52	-145	-83	-46
Exports, f.o.b.	282	269	310	316	308	325	427	426	480	384	476
Imports, f.o.b.	-478	-478	-497	-522	-481	-556	-612	-642	-788	-621	-647
Trade Balance	-197	-209	-187	-207	-172	-231	-185	-216	-308	-237	-171
Services, net	30	46	46	71	88	143	211	230	217	183	191
Income, net	-53	-67	-67	-89	-117	-114	-125	-159	-165	-108	-158
Current Transfers, net	58	40	43	41	46	51	74	93	112	79	92
Capital Account Balance	-2	15	16	7	10	3	9	4	9	18	6
Financial Account Balance	153	167	157	213	149	156	25	87	147	105	22
Direct Investment, net	23	61	25	-11	111	126	108	139	167	108	95
Portfolio Investment, net	113	-19	124	79	77	18	-22	79	0	-10	-8
Other Investment, net	69	123	1	113	-71	6	-13	-108	38	53	-60
Reserve Assets	-52	3	6	31	31	11	-49	-22	-58	-47	-5
Foreign exchange	-52	3	6	31	31	12	-49	-21	-57	-22	-5
Errors and Omissions	11	9	-9	-35	-4	-8	-9	-39	-11	-41	18
Debt											
External Public Debt Outstanding (US\$m)	553	645	776	948	929	981	1,009	1,064	1,048	1,063	.
Debt Service/Exports (%)	17.3	21.7	38.5	29.4	60.9	36.7	17.6	76.0	12.3	13.6	.
Government Finance (millions of local currency)											
Revenue	350	372	426	422	453	512	566	649	730	679	736
Expense	556	601	594	622	665	650	647	794	764	766	803
Grants	66	87	101	27	59	21	35	72	65	45	24

7.8 | Bolivia selected economic data

	2000	2001	2002	2003	2004	2005	2006	2007	2008	2009	2010
Population											
Population (000)	8,195	8,367	8,542	8,719	8,896	9,073	9,250	9,426	9,601	9,775	9,947
Growth Rate (%)	2.1	2.1	2.1	2.0	2.0	2.0	1.9	1.9	1.8	1.8	1.7
National Accounts											
GDP, current prices (m. LCU)	51,928	53,790	56,682	61,904	69,626	77,024	91,748	103,009	120,694	121,727	134,838
GDP constant (m. LCU)	22,356	22,733	23,298	23,929	24,928	26,030	27,279	28,524	30,278	31,294	32,604
Real GDP Growth Rate (%)	2.5	1.7	2.5	2.7	4.2	4.4	4.8	4.6	6.1	3.4	4.2
GDP per capita (constant LCU)	2,653	2,636	2,640	2,651	2,702	2,761	2,834	2,902	3,019	3,060	3,127
Gross Capital Formation (m. LCU)	9,422	7,675	9,236	8,191	7,674	10,485	10,787	15,644	21,185	20,659	.
Employment and Wages											
Unemployment Rate (%)	4.8	5.4	5.4	.	4.3	5.4	5.3	5.2	.	.	.
Real Average Wage (2000=100)	100	105.8	109.3	111.1	114.1	110.0	101.2	95.5	88.4	.	.
Prices											
GDP Deflator (2005=100)	78	80.0	82.2	87.4	94.4	100.0	113.7	122.0	134.7	.	.
Annual Change (%)	5.2	1.9	2.8	6.3	8.0	5.9	13.7	7.4	10.4	.	.
Consumer Price Index (2005=100)	86	87.1	87.9	90.9	94.9	100.0	104.3	113.4	129.2	133.6	136.9
Annual Change (%)	4.6	1.6	0.9	3.3	4.4	5.4	4.3	8.7	14.0	3.3	2.5
Interest Rate: Deposit Rate, (annual %)	11.0	9.8	9.6	11.4	7.4	4.9	4.0	3.5	4.7	3.4	1.0
Interest Rate: Lending Rate, (annual %)	34.6	20.1	20.6	17.7	14.5	16.6	11.9	12.9	13.9	12.4	9.9
Balance of Payments (millions of US\$)											
Current Account Balance	-446	-274	-352	76	337	622	1,317	1,591	1,993	813	.
Exports, f.o.b.	1,246	1,285	1,299	1,598	2,146	2,791	3,875	4,458	6,527	4,918	.
Imports, f.o.b.	-1,610	-1,580	-1,639	-1,497	-1,725	-2,183	-2,632	-3,243	-4,764	-4,144	.
Trade Balance	-364	-295	-340	100	421	609	1,242	1,215	1,762	774	.
Services, net	-244	-164	-177	-187	-190	-194	-350	-400	-517	-500	.
Income, net	-225	-211	-205	-303	-385	-376	-397	-489	-536	-674	.
Current Transfers, net	387	396	369	465	491	584	822	1,266	1,284	1,213	.
Capital Account Balance	0	0	0	7	8	9	1,813	1,180	10	111	.
Financial Account Balance	500	477	991	89	282	-259	-3,026	-2,660	-2,004	-471	.
Direct Investment, net	734	703	674	195	63	-242	278	363	509	420	.
Portfolio Investment, net	55	-23	-19	-68	-35	-153	25	-30	-208	-154	.
Other Investment, net	-327	-236	34	114	412	599	-2,042	-1,055	69	-411	.
Reserve Assets	39	33	303	-152	-157	-463	-1,286	-1,938	-2,374	-326	.
Foreign exchange	46	45	309	-142	-154	-459	-1,285	-1,936	-2,374	-325	.
Errors and Omissions	-54	-203	-639	-172	-628	-372	-105	-112	1	-453	.
Debt											
External Public Debt Outstanding (US\$m)	4,137	3,126	3,517	4,160	4,557	4,568	3,175	2,194	2,403	2,545	.
Debt Service/Exports (%)	39.4	33.2	28.8	21.3	19.7	15.6	9.2	13.9	13.0	14.4	.
Government Finance (millions of local currency)											
Revenue	10,818	10,975	11,421	12,376	15,289	19,547	25,623	29,203	34,279	.	.
Current revenue	9,878	10,280	10,077	10,585	13,348	17,942	23,735	27,305	32,931	.	.
Capital revenue	940	695	1,344	1,791	1,941	1,605	1,889	1,899	1,348	.	.
Expense	13,215	14,788	15,978	16,999	19,032	22,252	25,341	28,411	36,326	.	.
Current expenditure	11,684	12,901	13,447	14,540	16,070	18,983	22,617	24,774	32,992	.	.
Capital expenditure	1,576	1,946	2,574	2,465	2,984	3,314	2,743	3,517	3,227	.	.
Lending minus repayments	-45	-59	-44	-7	-22	-45	-19	121	107	.	.
Overall primary balance	-1,481	-2,611	-3,142	-3,025	-1,786	-526	2,525	2,974	63	.	.
Overall fiscal balance	-2,397	-3,813	-4,556	-4,622	-3,743	-2,705	283	792	-2,048	.	.
Total Financing	2,397	3,813	4,556	4,622	3,743	2,705	-283	-792	2,048	.	.
Domestic	1,863	3,117	2,690	2,257	2,318	1,914	172	-1,109	2,236	.	.
Foreign	588	1,028	2,000	2,369	1,287	616	-738	-8	305	.	.
Other	-54	-332	-133	-4	138	175	283	325	-494	.	.

7.9 | Brazil

selected economic data

	2000	2001	2002	2003	2004	2005	2006	2007	2008	2009	2010
Population											
Population (000)	176,320	178,870	181,418	183,960	186,489	188,993	191,469	193,919	196,343	198,739	201,103
Growth Rate (%)	1.5	1.4	1.4	1.4	1.4	1.3	1.3	1.3	1.2	1.2	1.2
National Accounts											
GDP, current prices (m. LCU)	1,179,482	1,302,136	1,477,822	1,699,947	1,941,497	2,147,239	2,369,483	2,661,343	3,031,864	3,185,126	3,674,964
GDP constant (m. LCU)	1,024,053	1,037,518	1,065,074	1,077,288	1,138,843	1,174,813	1,221,304	1,295,698	1,362,584	1,353,801	1,455,195
Real GDP Growth Rate (%)	4.3	1.3	2.7	1.1	5.7	3.2	4.0	6.1	5.2	-0.6	7.5
GDP per capita (constant LCU)	5,979	5,969	6,038	6,019	6,272	6,378	6,582	6,905	7,186	7,070	7,530
Gross Capital Formation (m. LCU)	215,257	234,756	239,350	268,095	332,334	347,975	397,027	487,761	627,158	525,816	.
Employment and Wages											
Unemployment Rate (%)	.	9.3	9.1	9.7	8.9	9.3	8.4	8.1	7.1	8.3	.
Real Average Wage (2000=100)	100	95.1	93.1	84.9	85.5	85.2	88.2	89.5	91.4	92.6	.
Prices											
GDP Deflator (2005=100)	63	68.7	75.9	86.3	93.3	100.0	106.1	112.4	121.7	128.7	138.2
Annual Change (%)	6.2	9.0	10.6	13.7	8.0	7.2	6.1	5.9	8.3	5.7	7.3
Consumer Price Index (2005=100)	66	70.6	76.5	87.8	93.6	100.0	104.2	108.0	114.1	119.7	125.7
Annual Change (%)	7.0	6.8	8.5	14.7	6.6	6.9	4.2	3.6	5.7	4.9	5.0
Interest Rate: Deposit Rate, (annual %)	17.2	17.9	19.1	22.0	15.4	17.6	13.9	10.6	11.7	9.3	8.9
Interest Rate: Lending Rate, (annual %)	56.8	57.6	62.9	67.1	54.9	55.4	50.8	43.7	47.3	44.7	40.0
Balance of Payments (millions of US\$)											
Current Account Balance	-24,225	-23,215	-7,637	4,177	11,738	13,985	13,622	1,551	-28,192	-24,302	-47,365
Exports, f.o.b.	55,086	58,223	60,362	73,084	96,475	118,308	137,807	160,649	197,942	152,995	201,915
Imports, f.o.b.	-55,783	-55,572	-47,241	-48,290	-62,809	-73,606	-91,350	-120,617	-173,107	-127,705	-181,694
Trade Balance	-698	2,650	13,121	24,794	33,666	44,703	46,458	40,032	24,836	25,290	20,221
Services, net	-7,162	-7,759	-4,957	-4,931	-4,677	-8,309	-9,654	-13,219	-16,690	-19,245	-30,807
Income, net	-17,886	-19,743	-18,191	-18,552	-20,520	-25,967	-27,489	-29,291	-40,562	-33,684	-39,567
Current Transfers, net	1,521	1,638	2,390	2,867	3,268	3,558	4,306	4,029	4,224	3,338	2,788
Capital Account Balance	273	-36	433	498	339	663	869	756	1,055	1,129	1,119
Financial Account Balance	21,315	23,782	7,269	-3,883	-9,940	-14,446	-15,456	845	25,328	23,521	49,443
Direct Investment, net	30,498	24,715	14,108	9,894	8,695	12,550	-9,420	27,518	24,601	36,033	36,919
Portfolio Investment, net	6,955	77	-5,119	5,308	-4,750	4,885	9,573	48,390	1,133	50,283	63,011
Other Investment, net	-18,202	2,767	-1,062	-10,438	-10,963	-27,521	14,577	13,131	2,875	-16,300	-1,274
Reserve Assets	2,262	-3,307	-302	-8,496	-2,244	-4,319	-30,569	-87,484	-2,969	-46,651	-49,101
Foreign exchange	1,897	-3,721	-120	-8,776	-2,283	-4,308	-30,665	-87,631	-2,459	-42,153	-47,932
Errors and Omissions	2,637	-531	-66	-793	-2,137	-201	965	-3,152	1,809	-347	-3,197
Debt											
External Public Debt Outstanding (US\$m)	96,127	96,146	99,246	99,684	97,105	94,028	84,245	79,595	79,646	87,317	.
Debt Service/Exports (%)	95.1	77.0	71.0	67.1	47.8	45.7	38.0	28.0	23.4	23.4	.
Government Finance (millions of local currency)											
Revenue	234,590	270,041	319,629	355,663	418,379	486,981	541,936	617,554	714,699	737,062	.
Current revenue	234,590	270,041	319,629	355,663	418,379	486,981	541,936	617,554	714,699	737,062	.
Expense	256,223	297,119	336,873	429,413	454,396	564,155	610,300	667,341	751,285	849,926	.
Current expenditure	207,657	238,989	272,054	369,483	380,323	473,627	508,237	548,059	609,517	703,974	.
Capital expenditure	48,567	58,130	64,819	59,930	74,073	90,527	102,063	119,282	141,768	145,952	.
Overall primary balance	21,460	22,429	32,355	39,275	49,678	52,985	48,919	58,295	71,974	39,845	.
Overall fiscal balance	-21,633	-27,079	-17,243	-73,750	-36,016	-77,174	-68,364	-49,787	-36,586	-112,864	.

7.10 | Chile

selected economic data

	2000	2001	2002	2003	2004	2005	2006	2007	2008	2009	2010
Population											
Population (000)	15,156	15,332	15,504	15,672	15,836	15,995	16,151	16,304	16,454	16,602	16,746
Growth Rate (%)	1.2	1.1	1.1	1.1	1.0	1.0	1.0	0.9	0.9	0.9	0.9
National Accounts											
GDP, current prices (b. LCU)	40,570	43,529	46,332	51,156	58,303	66,174	77,820	85,792	89,210	90,154	103,742
GDP constant (b. LCU)	46,521	48,162	49,202	51,156	54,247	57,256	59,885	62,624	64,941	63,841	67,199
Real GDP Growth Rate (%)	4.5	3.5	2.2	4.0	6.0	5.5	4.6	4.6	3.7	-1.7	5.3
GDP per capita (constant LCU)	3,058,337	3,127,020	3,156,173	3,248,324	3,392,286	3,528,726	3,648,342	3,776,044	3,877,089	3,758,851	3,909,197
Gross Capital Formation (b. LCU)	8,868	9,616	10,036	10,797	11,684	14,693	15,937	17,586	22,370	17,440	.
Employment and Wages											
Unemployment Rate (%)	9.2	9.1	8.9	8.5	8.8	8.0	7.7	7.1	7.8	9.7	.
Real Average Wage (2000=100)	100	101.7	103.7	104.6	106.5	108.5	110.6	113.7	113.5	118.9	.
Prices											
GDP Deflator (2005=100)	75	78.2	81.4	86.5	93.0	100.0	112.4	118.6	118.8	122.2	133.7
Annual Change (%)	4.6	3.8	4.2	6.2	7.5	7.6	12.4	5.5	0.2	2.9	9.4
Consumer Price Index (2009=100)	100.0	101.4
Annual Change (%)	1.4
Interest Rate: Deposit Rate, (annual %)	9.2	6.2	3.8	2.7	1.9	3.9	5.1	5.6	7.5	2.0	1.8
Interest Rate: Lending Rate, (annual %)	14.8	11.9	7.8	6.2	5.1	6.7	8.0	8.7	13.3	7.3	4.8
Balance of Payments (millions of US\$)											
Current Account Balance	-898	-1,100	-580	-779	2,074	1,449	7,154	7,458	-3,307	2,570	3,802
Exports, f.o.b.	19,210	18,272	18,180	21,664	32,520	41,267	58,680	67,972	66,259	54,004	71,028
Imports, f.o.b.	-17,091	-16,428	-15,794	-17,941	-22,935	-30,492	-35,900	-44,031	-57,730	-39,888	-55,174
Trade Balance	2,119	1,844	2,386	3,723	9,585	10,775	22,780	23,941	8,529	14,117	15,855
Services, net	-719	-844	-701	-618	-746	-622	-631	-987	-964	-1,444	-1,019
Income, net	-2,856	-2,526	-2,847	-4,489	-7,837	-10,487	-18,401	-18,625	-13,802	-11,666	-15,424
Current Transfers, net	558	427	583	605	1,072	1,783	3,406	3,129	2,930	1,563	4,390
Capital Account Balance	0	0	83	0	5	41	13	16	3	15	5,641
Financial Account Balance	451	1,958	1,436	1,511	-1,810	-166	-5,641	-7,024	2,154	-3,359	-8,908
Direct Investment, net	873	2,590	2,207	2,701	5,610	4,801	5,127	9,961	7,109	4,813	6,351
Portfolio Investment, net	639	139	-2,317	-2,645	-3,308	-2,833	-9,238	-16,461	-7,619	-11,769	-7,071
Other Investment, net	-727	-1,282	1,869	972	-4,218	-356	167	-4,191	10,062	5,541	-4,242
Reserve Assets	-337	596	-199	366	191	-1,716	-1,997	3,214	-6,444	-1,648	-3,024
Foreign exchange	-663	550	-53	404	50	-1,924	-2,079	3,217	-6,362	-444	-2,984
Errors and Omissions	447	-858	-939	-732	-270	-1,324	-1,526	-450	1,150	774	-534
Debt											
External Public Debt Outstanding (US\$m)	5,228	5,553	6,770	8,016	9,397	9,173	9,390	9,325	8,782	9,282	.
Debt Service/Exports (%)	24.8	27.8	32.6	28.5	23.6	14.9	20.8	13.8	19.0	22.6	.
Government Finance (millions of local currency)											
Revenue	8,787,365	9,478,039	9,793,318	10,597,597	12,853,184	15,773,791	20,079,097	23,546,733	23,402,012	18,293,189	.
Current revenue	8,778,391	9,466,058	9,774,088	10,586,279	12,832,297	15,747,229	20,060,506	23,533,726	23,377,861	18,240,854	.
Capital revenue	8,974	11,981	19,230	11,318	20,887	26,562	18,591	13,007	24,151	52,336	.
Expense	9,054,447	9,710,786	10,368,143	10,828,065	11,608,716	12,752,047	14,094,989	15,995,640	18,721,754	22,335,741	.
Current expenditure	7,756,892	8,245,908	8,766,740	9,162,117	9,790,190	10,681,806	11,745,634	13,222,010	15,330,462	18,050,530	.
Capital expenditure	1,297,555	1,464,878	1,601,403	1,665,948	1,818,526	2,070,241	2,349,355	2,773,630	3,391,292	4,285,211	.
Overall primary balance	228,536	289,038	-32,444	356,575	1,805,445	3,577,772	6,523,211	8,072,395	5,119,949	-3,567,143	.
Overall fiscal balance	-267,082	-232,747	-574,825	-230,468	1,244,468	3,021,744	5,984,108	7,551,093	4,680,258	-4,042,551	.
Total Financing	267,082	232,747	574,825	230,468	-1,244,468	-3,021,744	-5,984,108	-7,551,093	-4,680,258	4,042,551	.

7.11 | Colombia selected economic data

	2000	2001	2002	2003	2004	2005	2006	2007	2008	2009	2010
Population											
Population (000)	38,910	39,312	39,805	40,351	40,922	41,488	42,046	42,597	43,141	43,677	44,205
Growth Rate (%)	0.9	1.2	1.3	1.4	1.4	1.4	1.3	1.3	1.3	1.2	1.2
National Accounts											
GDP, current prices (b. LCU)	208,531	225,851	245,323	272,345	307,762	340,156	383,898	431,072	478,635	503,345	539,538
GDP constant (b. LCU)	284,761	289,539	296,789	308,418	324,866	340,156	362,938	387,983	401,744	407,577	425,134
Real GDP Growth Rate (%)	2.9	1.7	2.5	3.9	5.3	4.7	6.7	6.9	3.5	1.5	4.3
GDP per capita (constant LCU)	7,069,149	7,095,446	7,181,400	7,370,060	7,667,806	7,931,153	8,361,589	8,832,644	9,038,057	9,061,746	9,341,240
Gross Capital Formation (b. LCU)	31,521	36,567	42,000	50,924	59,780	68,798	85,095	97,674	109,069	113,767	.
Employment and Wages											
Unemployment Rate (%)	16.6	13.9	14.5	13.7	12.2	11.0	12.0	10.3	11.4	12.0	.
Real Average Wage (2000=100)	100	99.7	102.7	102.0	103.7	105.3	109.3	109.0	106.9	108.0	.
Prices											
GDP Deflator (2005=100)	73	78.0	82.7	88.3	94.7	100.0	105.8	111.1	119.1	123.5	128.7
Annual Change (%)	33.7	6.5	6.0	6.8	7.3	5.6	5.8	5.0	7.2	3.7	4.2
Consumer Price Index (2005=100)	73	78.9	83.9	89.9	95.2	100.0	104.3	110.1	117.8	122.7	125.5
Annual Change (%)	9.2	8.0	6.4	7.1	5.9	5.0	4.3	5.5	7.0	4.2	2.3
Interest Rate: Deposit Rate, (annual %)	12.1	12.4	8.9	7.8	7.8	7.0	6.3	8.0	9.7	6.1	3.7
Interest Rate: Lending Rate, (annual %)	18.8	20.7	16.3	15.2	15.1	14.6	12.9	15.4	17.2	13.0	9.4
Balance of Payments (millions of US\$)											
Current Account Balance	795	-1,077	-1,297	-979	-910	-1,886	-2,989	-5,977	-6,923	-5,141	-8,944
Exports, f.o.b.	13,760	12,869	12,384	13,813	17,224	21,730	25,181	30,577	38,534	34,026	40,777
Imports, f.o.b.	-11,090	-12,269	-12,078	-13,258	-15,878	-20,134	-24,859	-31,173	-37,563	-31,479	-38,641
Trade Balance	2,670	600	306	556	1,346	1,595	322	-596	971	2,546	2,136
Services, net	-1,259	-1,412	-1,435	-1,439	-1,680	-2,102	-2,119	-2,607	-3,072	-2,809	-3,465
Income, net	-2,289	-2,619	-2,874	-3,404	-4,301	-5,461	-5,935	-8,002	-10,333	-9,492	-12,096
Current Transfers, net	1,673	2,354	2,706	3,309	3,724	4,082	4,743	5,228	5,512	4,614	4,481
Capital Account Balance	0	0	0	0	0	0	0	0	0	0	0
Financial Account Balance	-811	1,228	1,166	841	664	1,508	2,868	5,649	6,870	4,907	8,743
Direct Investment, net	2,111	2,526	1,277	783	2,873	5,590	5,558	8,136	8,342	4,049	256
Portfolio Investment, net	280	-10	1,098	-1,624	-259	-1,742	-2,431	891	-1,007	1,867	1,497
Other Investment, net	-2,231	48	-973	1,585	703	-555	-227	1,294	2,088	439	10,120
Reserve Assets	-846	-1,203	-124	198	-2,463	-1,724	-24	-4,672	-2,554	-1,448	-3,130
Foreign exchange	-842	-1,195	-111	210	-2,453	-1,698	-14	-4,651	-2,526	-523	-3,260
Errors and Omissions	16	-151	131	138	246	378	121	328	53	234	201
Debt											
External Public Debt Outstanding (US\$m)	20,806	21,774	20,670	22,784	23,772	22,555	24,720	27,402	28,960	35,364	.
Debt Service/Exports (%)	30.3	39.5	45.7	53.1	38.2	40.2	34.4	23.9	17.8	22.4	.
Government Finance (billions of local currency)											
Revenue	22,781	27,595	30,344	34,445	39,952	45,876	56,287	64,667	75,059	77,155	.
Current revenue	20,228	25,283	27,505	31,705	37,062	42,641	51,532	58,249	65,015	65,676	.
Capital revenue	2,554	2,312	2,840	2,740	2,889	3,236	4,755	6,418	10,044	11,479	.
Expense	32,465	38,445	42,779	45,974	53,934	59,629	69,419	76,210	86,127	97,871	.
Current expenditure	28,954	34,071	38,565	42,226	50,510	54,933	63,090	68,040	75,227	86,159	.
Capital expenditure	2,679	2,904	2,955	2,883	3,126	4,373	5,917	7,913	10,734	11,536	.
Lending minus repayments	832	1,471	1,259	865	298	324	412	257	166	176	.
Overall primary balance	-3,054	-3,353	-4,532	-1,873	-3,716	-3,869	895	4,403	4,299	-5,566	.
Overall fiscal balance	-9,684	-10,850	-12,435	-11,528	-13,983	-13,750	-13,069	-11,505	-11,067	-20,715	.
Total Financing	10,223	12,118	13,616	12,469	14,902	14,986	14,182	12,666	12,337	21,832	.
Domestic	6,531	5,721	6,271	6,144	7,585	17,410	7,446	3,401	8,123	13,289	.
Foreign	3,674	8,746	-19	5,600	3,446	-1,079	5,302	-875	2,360	9,378	.
Other	17	-2,350	7,364	726	3,871	-1,345	1,433	10,140	1,854	-835	.

7.12 | Costa Rica selected economic data

	2000	2001	2002	2003	2004	2005	2006	2007	2008	2009	2010
Population											
Population (000)	3,883	3,956	4,021	4,084	4,147	4,209	4,270	4,331	4,393	4,455	4,516
Growth Rate (%)	2.1	1.7	1.6	1.6	1.5	1.5	1.4	1.4	1.4	1.4	1.4
National Accounts											
GDP, current prices (b. LCU)	4,915	5,395	6,061	6,984	8,144	9,539	11,518	13,598	15,702	16,764	18,819
GDP constant (b. LCU)	1,423	1,439	1,480	1,575	1,642	1,739	1,892	2,042	2,097	2,070	2,157
Real GDP Growth Rate (%)	1.8	1.1	2.9	6.4	4.3	5.9	8.8	7.9	2.7	-1.3	4.2
GDP per capita (constant LCU)	373,567	368,256	370,305	385,262	393,023	407,629	434,490	459,547	462,678	459,378	472,741
Gross Capital Formation (b. LCU)	831	1,096	1,371	1,442	1,884	2,322	3,043	3,340	5,752	3,296	.
Employment and Wages											
Unemployment Rate (%)	5.2	6.1	6.4	6.7	6.5	6.6	6.0	4.6	4.9	.	.
Real Average Wage (2000=100)	100	101.0	105.1	105.5	102.8	100.8	102.4	103.8	101.7	109.5	.
Prices											
GDP Deflator (2005=100)	63	68.4	74.6	80.8	90.4	100.0	111.0	121.4	136.5	147.6	159.1
Annual Change (%)	7.0	8.6	9.2	8.3	11.8	10.6	11.0	9.4	12.4	8.2	7.8
Consumer Price Index (2005=100)	59	65.5	71.5	78.2	87.9	100.0	111.5	121.9	138.3	149.1	157.6
Annual Change (%)	11.0	11.2	9.2	9.4	12.3	13.8	11.5	9.4	13.4	7.8	5.7
Interest Rate: Deposit Rate, (annual %)	13.4	11.8	11.5	10.4	9.5	10.1	9.8	6.4	4.2	7.0	5.3
Interest Rate: Lending Rate, (annual %)	24.9	23.8	26.4	25.6	23.4	24.7	22.2	12.8	15.8	19.7	17.1
Balance of Payments (millions of US\$)											
Current Account Balance	-707	-603	-857	-880	-796	-981	-1,023	-1,646	-2,787	-576	-1,299
Exports, f.o.b.	5,813	4,923	5,270	6,163	6,370	7,099	8,102	9,299	9,555	8,838	9,375
Imports, f.o.b.	-6,024	-5,743	-6,548	-7,252	-7,791	-9,258	-10,829	-12,285	-14,569	-10,877	-12,951
Trade Balance	-210	-820	-1,278	-1,089	-1,421	-2,159	-2,727	-2,985	-5,013	-2,039	-3,576
Services, net	663	746	685	776	857	1,116	1,351	1,734	2,201	2,188	2,635
Income, net	-1,252	-679	-440	-776	-444	-209	4	-865	-417	-1,084	-717
Current Transfers, net	93	151	175	209	212	270	349	470	442	359	359
Capital Account Balance	18	19	13	25	13	16	1	21	7	58	59
Financial Account Balance	297	415	895	820	719	821	872	1,454	2,828	388	1,487
Direct Investment, net	404	451	625	548	733	904	1,371	1,634	2,072	1,339	1,404
Portfolio Investment, net	-69	19	103	11	142	-345	-493	-0	402	-286	373
Other Investment, net	-190	-41	329	599	-75	655	1,025	969	6	-404	272
Reserve Assets	152	-13	-163	-339	-80	-393	-1,031	-1,148	348	-260	-561
Foreign exchange	190	-1	-61	-353	-77	-388	-1,016	-1,125	331	-60	-561
Errors and Omissions	392	169	-51	35	64	144	150	171	-48	129	-248
Debt											
External Public Debt Outstanding (US\$m)	3,452	3,460	3,321	3,802	3,508	3,152	3,307	3,643	3,168	3,190	.
Debt Service/Exports (%)	8.1	9.9	9.2	10.0	10.4	8.0	6.5	6.7	11.0	9.6	.
Government Finance (millions of local currency)											
Revenue	610,138	725,563	808,802	973,273	1,107,685	1,321,385	1,638,353	2,104,653	2,490,000	2,363,296	.
Current revenue	608,538	722,092	808,751	952,444	1,107,640	1,321,309	1,637,788	2,104,408	2,489,500	2,359,168	.
Capital revenue	1,600	3,472	51	20,829	45	76	565	245	500	4,128	.
Expense	756,706	882,272	1,068,114	1,173,061	1,329,852	1,521,590	1,759,410	2,027,133	2,460,400	2,936,300	.
Current expenditure	685,955	809,055	977,983	1,098,588	1,239,747	1,420,475	1,652,560	1,850,496	2,119,800	2,634,799	.
Capital expenditure	75,351	73,217	90,131	74,473	90,105	101,115	106,850	176,637	340,600	301,501	.
Lending minus repayments	-4,600	0	0	0	0	0	0	0	0	0	.
Overall primary balance	29,085	57,157	105	97,480	110,893	193,592	315,644	497,163	369,700	-212,897	.
Overall fiscal balance	-146,568	-156,708	-259,312	-199,788	-222,167	-200,205	-121,058	77,520	29,600	-573,004	.
Total Financing	146,568	155,577	250,620	208,085	201,838	150,111
Domestic	76,012	79,500	191,473	155,321	130,075	151,043
Foreign	70,556	76,077	59,147	52,764	71,763	-932

7.13 | Dominican Republic selected economic data

	2000	2001	2002	2003	2004	2005	2006	2007	2008	2009	2010
Population											
Population (000)	8,469	8,614	8,757	8,897	9,032	9,164	9,295	9,426	9,558	9,691	9,824
Growth Rate (%)	1.7	1.7	1.6	1.6	1.5	1.4	1.4	1.4	1.4	1.4	1.4
National Accounts											
GDP, current prices (m. LCU)	388,302	415,521	463,624	617,989	909,037	1,020,002	1,189,802	1,364,210	1,576,163	1,678,763	1,901,897
GDP constant (m. LCU)	220,359	224,346	237,331	236,730	239,836	262,051	290,015	314,593	331,127	342,564	369,117
Real GDP Growth Rate (%)	5.7	1.8	5.8	-0.3	1.3	9.3	10.7	8.5	5.3	3.5	7.8
GDP per capita (constant LCU)	26,669	26,672	27,718	27,159	27,029	29,011	31,540	33,609	34,750	35,316	37,381
Gross Capital Formation (m. LCU)	90,370	87,489	98,136	92,540	135,571	168,398	218,984	258,144	288,574	248,859	.
Employment and Wages											
Unemployment Rate (%)	14.2	15.7	16.1	16.7	18.4	18.0	16.4	15.6	14.2	.	.
Prices											
GDP Deflator (2005=100)	45	47.6	50.2	67.1	97.4	100.0	105.4	111.4	122.3	125.9	132.4
Annual Change (%)	6.9	5.1	5.5	33.6	45.2	2.7	5.4	5.7	9.8	3.0	5.1
Consumer Price Index (2005=100)	43	47.3	49.7	63.4	96.0	100.0	107.6	114.2	126.3	128.2	136.3
Annual Change (%)	7.7	8.9	5.2	27.4	51.5	4.2	7.6	6.1	10.6	1.4	6.3
Interest Rate: Deposit Rate, (annual %)	17.7	15.6	16.5	20.5	21.1	13.9	9.8	7.0	10.3	7.8	4.9
Interest Rate: Lending Rate, (annual %)	26.8	24.3	26.1	31.4	32.6	24.1	19.5	15.8	19.9	18.1	12.1
Balance of Payments (millions of US\$)											
Current Account Balance	-1,027	-741	-798	1,036	1,041	-473	-1,287	-2,166	-4,519	-2,159	.
Exports, f.o.b.	5,737	5,276	5,165	5,471	5,936	6,145	6,610	7,160	6,748	5,519	.
Imports, f.o.b.	-9,479	-8,779	-8,838	-7,627	-7,888	-9,869	-12,174	-13,597	-15,993	-12,260	.
Trade Balance	-3,742	-3,503	-3,673	-2,156	-1,952	-3,725	-5,564	-6,437	-9,245	-6,741	.
Services, net	1,854	1,826	1,757	2,249	2,291	2,457	2,985	3,053	2,962	3,046	.
Income, net	-1,041	-1,092	-1,152	-1,393	-1,825	-1,902	-1,853	-2,183	-1,748	-1,769	.
Current Transfers, net	1,902	2,028	2,269	2,336	2,528	2,697	3,144	3,401	3,513	3,305	.
Capital Account Balance	2	4	7	6	4	0	290	206	144	407	.
Financial Account Balance	1,643	1,188	931	525	-66	931	1,120	1,548	4,390	1,842	.
Direct Investment, net	953	1,079	917	613	909	1,123	1,085	1,667	2,870	2,067	.
Portfolio Investment, net	265	604	-26	544	-24	244	774	949	-376	-449	.
Other Investment, net	356	24	-487	-990	-409	673	-394	-386	1,587	862	.
Reserve Assets	70	-518	527	358	-542	-1,109	-344	-683	309	-638	.
Foreign exchange	70	-518	526	358	-539	-1,111	-192	-572	252	-343	.
Errors and Omissions	-618	-452	-140	-1,567	-980	-458	-123	412	-16	-90	.
Debt											
External Public Debt Outstanding (US\$m)	3,311	3,798	4,053	5,465	5,981	5,772	6,223	6,275	6,848	7,714	.
Debt Service/Exports (%)	5.6	7.2	7.9	10.0	8.1	9.6	11.3	10.8	11.2	12.1	.
Government Finance (millions of local currency)											
Revenue	51,713	60,276	67,503	81,645	127,578	160,202	191,971	241,878	249,824	229,738	.
Current revenue	51,203	59,642	66,295	80,680	126,243	157,585	188,825	236,011	246,910	226,211	.
Capital revenue	68	214	783	39	2	0	32	0	0	2	.
Grants	441	420	425	926	1,333	2,617	3,113	5,866	2,914	3,525	.
Expense	49,977	64,696	74,998	99,730	150,499	171,856	204,230	240,329	308,119	283,423	.
Current expenditure	37,336	43,765	48,612	63,034	113,652	128,491	154,251	177,291	227,269	223,391	.
Capital expenditure	12,641	20,932	26,386	36,696	36,847	43,365	49,980	63,038	80,849	60,032	.
Overall primary balance	-3,887	-4,774	-993	-16,446	-14,580	6,792	3,470	18,444	-29,765	-25,898	.
Overall fiscal balance	-6,827	-8,092	-6,216	-26,628	-31,175	-6,532	-12,979	1,624	-54,995	-57,855	.
Total Financing	6,827	8,092	6,216	26,628	31,175	6,532	12,979	-1,624	54,995	57,855	.
Domestic	5,143	-1,349	2,682	-4,919	10,945	-4,445	-13,035	-9,156	30,669	22,961	.
Foreign	1,684	9,441	3,534	31,547	20,229	10,977	26,014	7,532	24,325	34,895	.

7.14 | Ecuador selected economic data

	2000	2001	2002	2003	2004	2005	2006	2007	2008	2009	2010
Population											
Population (000)	12,446	12,629	12,827	13,074	13,368	13,662	13,917	14,135	14,354	14,573	14,791
Growth Rate (%)	1.4	1.6	1.6	2.3	2.2	2.2	1.6	1.6	1.5	1.5	1.5
National Accounts											
GDP, current prices (m. LCU)	16,283	21,271	24,718	28,409	32,646	36,942	41,705	45,504	54,209	52,022	58,910
GDP constant (m. LCU)	16,283	17,057	17,642	18,219	19,827	20,966	21,962	22,410	24,032	24,119	24,891
Real GDP Growth Rate (%)	4.2	4.8	3.4	3.3	8.8	5.7	4.8	2.0	7.2	0.4	3.2
GDP per capita (constant LCU)	1,275	1,316	1,341	1,365	1,464	1,526	1,575	1,584	1,674	1,655	1,683
Gross Capital Formation (m. LCU)	3,205	5,158	6,587	6,154	7,632	8,845	9,776	11,036	15,439	18,441	.
Employment and Wages											
Unemployment Rate (%)	9.0	10.7	9.1	11.4	8.6	7.7	7.7	6.1	7.3	6.5	.
Real Average Wage (2000=100)	100	111.9	124.1
Prices											
GDP Deflator (2005=100)	57	70.8	79.5	88.5	93.4	100.0	107.8	115.2	128.0	122.4	131.7
Annual Change (%)	-7.5	24.7	12.4	11.3	5.6	7.0	7.8	6.9	11.1	-4.4	7.6
Consumer Price Index (2005=100)	57	78.3	88.1	95.0	97.6	100.0	103.0	105.4	114.2	120.1	124.4
Annual Change (%)	96.1	37.7	12.5	7.9	2.7	2.4	3.0	2.3	8.4	5.2	3.6
Interest Rate: Deposit Rate, (annual %)	8.8	6.8	5.6	5.7	4.2	3.6	4.2	.	4.9	4.8	3.9
Interest Rate: Lending Rate, (annual %)	17.1	16.2	15.8	13.6	10.0	9.6	9.8
Balance of Payments (millions of US\$)											
Current Account Balance	926	-654	-1,272	-422	-542	347	1,618	1,588	1,087	-268	.
Exports, f.o.b.	5,057	4,821	5,258	6,446	7,968	10,468	13,176	14,870	19,147	14,347	.
Imports, f.o.b.	-3,657	-5,178	-6,160	-6,366	-7,684	-9,709	-11,408	-13,047	-17,776	-14,269	.
Trade Balance	1,399	-356	-902	80	284	758	1,768	1,823	1,371	78	.
Services, net	-420	-572	-716	-743	-954	-1,130	-1,305	-1,371	-1,641	-1,379	.
Income, net	-1,405	-1,364	-1,306	-1,528	-1,903	-1,942	-1,949	-2,047	-1,589	-1,463	.
Current Transfers, net	1,352	1,639	1,652	1,769	2,030	2,661	3,104	3,184	2,946	2,497	.
Capital Account Balance	1,977	18	27	61	14	73	26	58	45	1,990	.
Financial Account Balance	-2,559	1,033	1,416	210	-48	-721	-1,859	-1,587	-1,146	-1,455	.
Direct Investment, net	-23	539	783	872	837	493	271	194	1,001	316	.
Portfolio Investment, net	-1,725	40	0	-304	-190	366	-1,384	-118	213	-3,142	.
Other Investment, net	-504	349	567	-206	-418	-871	-870	-165	-1,407	689	.
Reserve Assets	-307	106	66	-152	-277	-710	124	-1,497	-952	681	.
Foreign exchange	-331	123	126	-94	-196	-684	212	-1,307	-949	865	.
Errors and Omissions	-344	-398	-171	152	577	301	214	-59	14	-268	.
Debt											
External Public Debt Outstanding (US\$m)	10,875	10,778	10,902	11,069	10,861	10,850	10,304	10,710	10,043	6,910	.
Debt Service/Exports (%)	31.4	34.9	34.8	32.9	41.5	36.3	29.3	22.6	13.1	40.8	.
Government Finance (millions of local currency)											
Revenue	3,250	3,845	4,572	4,771	5,179	6,052	6,895	8,490	13,799	11,583	.
Current revenue	3,250	3,845	4,572	4,771	5,179	6,052	6,895	8,490	13,799	11,583	.
Expense	3,230	4,067	4,757	4,879	5,498	6,232	6,983	8,554	14,414	14,218	.
Current expenditure	2,572	2,628	3,531	3,562	4,103	4,720	5,314	5,926	8,485	8,934	.
Capital expenditure	659	1,439	1,226	1,317	1,395	1,512	1,669	2,627	5,929	5,284	.
Overall primary balance	1,029	715	638	718	494	675	854	851	182	-2,161	.
Overall fiscal balance	19	-222	-185	-108	-319	-180	-88	-64	-615	-2,635	.

7.15 | El Salvador selected economic data

	2000	2001	2002	2003	2004	2005	2006	2007	2008	2009	2010
Population											
Population (000)	5,850	5,884	5,902	5,920	5,935	5,956	5,971	5,982	6,006	6,031	6,052
Growth Rate (%)	0.8	0.3	0.3	0.3	0.2	0.5	-0.0	0.4	0.4	0.4	0.3
National Accounts											
GDP, current prices (m. LCU)	13,134	13,813	14,307	15,047	15,798	17,214	18,749	20,377	22,107	21,100	21,700
GDP constant (m. LCU)	7,531	7,660	7,839	8,019	8,168	8,440	8,795	9,176	9,399	9,067	9,134
Real GDP Growth Rate (%)	2.2	1.7	2.3	2.3	1.9	3.3	4.2	4.3	2.4	-3.5	0.7
GDP per capita (constant LCU)	1,376	1,390	1,412	1,435	1,452	1,490	1,542	1,598	1,625	1,557	1,558
Gross Capital Formation (m. LCU)	2,223	2,303	2,345	2,555	2,560	2,683	3,008	3,246	3,295	2,768	.
Employment and Wages											
Unemployment Rate (%)	7.0	7.0	6.2	6.9	6.8	7.2	6.5	6.4	5.9	.	.
Prices											
GDP Deflator (2005=100)	86	89.2	90.3	92.8	95.7	100.0	104.4	109.0	114.7	114.2	115.6
Annual Change (%)	3.2	3.4	1.2	2.8	3.1	4.5	4.4	4.4	5.3	-0.5	1.2
Consumer Price Index (2005=100)	85	87.9	89.5	91.4	95.5	100.0	104.0	108.8	116.1	117.3	118.7
Annual Change (%)	2.3	3.8	1.9	2.1	4.5	4.7	4.0	4.6	6.7	1.1	1.2
Interest Rate: Deposit Rate, (annual %)	9.3
Interest Rate: Lending Rate, (annual %)	14.0
Balance of Payments (millions of US\$)											
Current Account Balance	-431	-150	-405	-702	-628	-622	-766	-1,217	-1,532	-304	-488
Exports, f.o.b.	2,963	2,892	3,020	3,153	3,339	3,465	3,783	4,070	4,703	3,930	4,577
Imports, f.o.b.	-4,703	-4,824	-4,885	-5,439	-6,000	-6,502	-7,419	-8,435	-9,379	-7,038	-8,189
Trade Balance	-1,740	-1,933	-1,865	-2,287	-2,660	-3,037	-3,636	-4,365	-4,677	-3,108	-3,612
Services, net	-235	-250	-240	-107	-64	-129	-164	-141	-213	-90	-94
Income, net	-253	-266	-323	-423	-458	-490	-438	-456	-389	-548	-381
Current Transfers, net	1,797	2,298	2,023	2,114	2,555	3,035	3,472	3,746	3,747	3,442	3,599
Capital Account Balance	109	199	209	113	100	94	97	153	80	131	232
Financial Account Balance	333	408	812	733	175	977	1,153	281	1,288	-487	272
Direct Investment, net	178	289	496	123	366	398	267	1,455	824	364	78
Portfolio Investment, net	-26	29	266	189	57	125	765	-167	131	757	-70
Other Investment, net	135	-87	-73	737	-300	263	168	-729	668	-1,185	-31
Reserve Assets	46	178	124	-316	53	190	-47	-279	-333	-423	295
Foreign exchange	46	178	124	-316	53	190	-47	-279	-333	-207	296
Errors and Omissions	-12	-457	-615	-143	352	-449	-485	783	164	660	-15
Debt											
External Public Debt Outstanding (US\$m)	2,710	3,218	4,415	4,842	4,975	4,786	5,589	5,435	5,743	6,131	.
Debt Service/Exports (%)	9.7	10.1	11.8	19.1	21.9	17.9	22.0	18.1	15.8	25.2	.
Government Finance (millions of local currency)											
Revenue	1,584	1,650	1,793	1,983	2,096	2,308	2,684	2,973	3,243	2,857	.
Current revenue	1,488	1,599	1,746	1,916	2,048	2,259	2,648	2,917	3,191	2,774	.
Capital revenue	1	0	2	0	1	0	0	0	0	0	.
Grants	94	51	45	67	47	49	36	56	52	84	.
Expense	1,883	2,143	2,240	2,389	2,273	2,485	2,764	3,016	3,376	3,629	.
Current expenditure	1,545	1,585	1,624	1,817	1,925	2,057	2,285	2,497	2,779	3,031	.
Capital expenditure	350	566	616	578	371	438	494	531	603	603	.
Lending minus repayments	-13	-8	1	-6	-22	-11	-16	-11	-6	-5	.
Overall primary balance	-119	-320	-223	-116	143	194	367	455	377	-254	.
Overall fiscal balance	-299	-493	-447	-406	-177	-177	-80	-43	-133	-772	.
Total Financing	299	493	447	406	177	177	80	43	133	772	.
Domestic	143	-86	-784	-36	-72	-151	-350	192	75	15	.
Foreign	156	579	1,231	442	250	328	430	-148	58	757	.
Other	-0	0	0	0	0	0	0	0	0	0	.

7.16 | Guatemala selected economic data

	2000	2001	2002	2003	2004	2005	2006	2007	2008	2009	2010
Population											
Population (000)	11,085	11,284	11,507	11,725	11,940	12,183	12,455	12,728	13,002	13,277	13,550
Growth Rate (%)	1.6	2.0	1.9	1.8	1.8	2.2	2.2	2.2	2.1	2.1	2.0
National Accounts											
GDP, current prices (m. LCU)	133,427	146,978	162,507	174,044	190,440	207,729	229,836	261,760	295,872	307,526	334,182
GDP constant (m. LCU)	143,533	146,978	152,661	156,524	161,458	166,722	175,691	186,767	192,895	193,935	199,007
Real GDP Growth Rate (%)	2.5	2.4	3.9	2.5	3.2	3.3	5.4	6.3	3.3	0.5	2.6
GDP per capita (constant LCU)	12,786	12,777	12,947	12,950	13,031	13,127	13,497	14,000	14,108	13,840	13,857
Gross Capital Formation (m. LCU)	26,707	28,895	33,402	35,332	39,700	40,997	47,861	54,527	48,418	39,794	.
Employment and Wages											
Unemployment Rate (%)	1.4	1.3	3.1	2.8	3.1	.	1.8
Real Average Wage (2000=100)	100	100.5	99.6	100.0	97.8	93.9	92.9	91.4	89.0	89.1	.
Prices											
GDP Deflator (2005=100)	84	80.3	85.4	89.2	94.7	100.0	105.0	112.5	123.1	127.3	133.6
Annual Change (%)	6.8	-4.1	6.4	4.5	6.1	5.6	5.0	7.1	9.4	3.4	5.0
Consumer Price Index (2005=100)	70	75.4	81.4	85.9	92.2	100.0	106.4	113.3	127.6	130.0	135.0
Annual Change (%)	6.0	7.6	8.0	5.5	7.4	8.4	6.4	6.5	12.6	1.9	3.9
Interest Rate: Deposit Rate, (annual %)	10.2	8.8	6.9	4.8	4.2	4.3	4.5	4.8	5.1	5.6	5.5
Interest Rate: Lending Rate, (annual %)	20.9	19.0	16.9	15.0	13.8	13.0	12.8	12.8	13.4	13.8	13.3
Balance of Payments (millions of US\$)											
Current Account Balance	-1,050	-1,253	-1,235	-1,039	-1,164	-1,241	-1,524	-1,786	-1,681	8	-826
Exports, f.o.b.	3,085	2,860	2,819	3,060	5,105	5,460	6,082	6,983	7,846	7,295	8,566
Imports, f.o.b.	-4,742	-5,142	-5,791	-6,176	-8,737	-9,650	-10,934	-12,470	-13,421	-10,643	-12,858
Trade Balance	-1,657	-2,282	-2,972	-3,116	-3,632	-4,191	-4,852	-5,487	-5,575	-3,348	-4,292
Services, net	-48	117	79	-67	-244	-142	-260	-310	-276	-159	-154
Income, net	-210	-84	-318	-318	-410	-485	-680	-843	-938	-1,111	-1,200
Current Transfers, net	865	997	1,976	2,462	3,122	3,576	4,268	4,854	5,108	4,626	4,820
Capital Account Balance	86	93	124	134	0	0	142	0	1	1	1
Financial Account Balance	879	1,073	1,175	965	329	442	901	1,378	1,132	-268	669
Direct Investment, net	230	456	111	131	255	470	552	720	737	574	663
Portfolio Investment, net	43	130	-146	7	399	-77	-83	-185	62	-125	18
Other Investment, net	1,248	961	1,232	1,378	280	287	684	1,060	665	-244	664
Reserve Assets	-642	-474	-22	-551	-605	-239	-252	-216	-333	-473	-677
Foreign exchange	-594	-475	-7	-534	-593	-238	-252	-216	-333	-202	-678
Errors and Omissions	86	87	-64	-60	836	799	481	407	548	259	157
Debt											
External Public Debt Outstanding (US\$m)	2,540	2,928	3,098	3,427	3,794	3,687	3,921	4,189	4,352	4,931	.
Debt Service/Exports (%)	9.6	10.0	10.2	10.7	18.6	17.8	18.2	19.1	17.1	18.4	.
Government Finance (millions of local currency)											
Revenue	16,469	18,222	20,771	21,809	23,462	24,907	29,250	33,611	35,578	34,037	.
Current revenue	16,458	18,208	20,758	21,749	23,461	24,881	29,215	33,584	35,547	34,026	.
Capital revenue	11	14	13	59	1	26	35	27	31	11	.
Expense	19,110	21,327	22,541	26,333	25,542	28,500	33,721	37,382	40,355	43,709	.
Current expenditure	13,572	15,196	15,688	17,530	17,429	18,927	21,622	24,781	27,134	31,161	.
Capital expenditure	5,538	6,131	6,853	8,804	8,113	9,573	12,100	12,602	13,221	12,548	.
Overall primary balance	-810	-815	500	-2,258	521	-670	-1,289	120	-751	-5,297	.
Overall fiscal balance	-2,640	-3,105	-1,770	-4,525	-2,080	-3,594	-4,471	-3,772	-4,777	-9,672	.
Total Financing	2,640	3,105	1,770	4,525	2,080	3,594	4,471	3,772	4,777	9,672	.
Domestic	1,989	-129	160	1,798	-1,282	3,931	1,604	731	3,928	5,554	.
Foreign	651	3,234	1,609	2,727	3,362	-337	2,867	3,040	850	4,117	.

7.17 | Guyana selected economic data

	2000	2001	2002	2003	2004	2005	2006	2007	2008	2009	2010
Population											
Population (000)	786	786	783	780	779	776	770	764	758	753	748
Growth Rate (%)	0.4	-0.2	-0.7	-0.1	-0.0	-0.8	-0.9	-0.8	-0.7	-0.6	-0.6
National Accounts											
GDP, current prices (m. LCU)	205,128	210,977	221,117	231,085	248,141	262,250	291,964	352,152	391,505	413,113	451,384
GDP constant (m. LCU)	244,333	249,856	252,728	251,080	255,013	250,060	262,880	281,336	286,895	296,417	307,189
Real GDP Growth Rate (%)	-1.3	2.3	1.1	-0.7	1.6	-1.9	5.1	7.0	2.0	3.3	3.6
GDP per capita (constant LCU)	328,799	335,737	336,422	333,098	337,162	329,492	345,209	368,376	373,877	385,047	397,761
Gross Capital Formation (m. LCU)	30,912	28,776	28,881	30,184	36,785	-19,257	82,818	86,862	93,746	110,056	.
Employment and Wages											
Unemployment Rate (%)	.	9.1	11.8
Prices											
GDP Deflator (2000=100)	100	100.3	102.9	107.8	114.0
Annual Change (%)	9.2	0.3	2.6	4.7	5.8
Consumer Price Index (2005=100)	78	80.0	84.3	89.4	93.5	100.0	106.6	119.7	129.4	133.2	135.9
Annual Change (%)	6.1	2.6	5.3	6.0	4.7	6.9	6.6	12.3	8.1	2.9	2.1
Interest Rate: Deposit Rate, (annual %)	8.7	7.6	4.5	3.2	2.7	2.6	2.5	2.5	2.4	2.3	2.3
Interest Rate: Lending Rate, (annual %)	17.3	17.0	16.3	15.0	14.5	14.5	14.5	14.6	14.6	14.5	14.5
Balance of Payments (millions of US\$)											
Current Account Balance	-82	-91	-62	-45	-20	-96	-181	-112	-192	.	.
Exports, f.o.b.	503	485	490	508	584	546	580	689	789	.	.
Imports, f.o.b.	-550	-541	-514	-525	-592	-717	-810	-978	-1,183	.	.
Trade Balance	-47	-56	-24	-17	-8	-171	-230	-288	-394	.	.
Services, net	-24	-20	-24	-15	-47	-53	-98	-100	-111	.	.
Income, net	-58	-59	-55	-55	-39	-39	-69	-11	-15	.	.
Current Transfers, net	47	44	40	43	74	167	216	287	329	.	.
Capital Account Balance	16	32	31	44	46	52	350	465	39	.	.
Financial Account Balance	94	104	32	21	17	112	-116	-271	209	.	.
Direct Investment, net	67	56	44	26	30	77	102	152	168	.	.
Portfolio Investment, net	-9	-11	-9	-27	-6	-17	-4	-95	7	.	.
Other Investment, net	52	24	11	27	3	77	-189	-293	94	.	.
Reserve Assets	-16	35	-14	-5	-10	-25	-26	-36	-60	.	.
Foreign exchange	.	29	-11	-5	-8	-31	-25	-37	-59	.	.
Errors and Omissions	-29	-45	-1	-20	-43	-68	-53	-82	-56	.	.
Debt											
External Public Debt Outstanding (US\$m)	1,124	1,095	1,145	1,217	1,141	1,041	923	584	676	781	.
Debt Service/Exports (%)	10.1	6.8	9.6	8.6	6.4	4.9	4.3	3.1	2.6	.	.
Government Finance (millions of local currency)											
Revenue	51,479	52,333	56,005	53,798	61,798	68,148	79,881	91,493	99,513	112,165	119,627
Expense	60,068	59,810	60,338	64,036	69,355	88,905	101,399	105,838	114,433	127,431	133,105

7.18 | Haiti

selected economic data

	2000	2001	2002	2003	2004	2005	2006	2007	2008	2009	2010
Population											
Population (000)	8,413	8,569	8,723	8,884	9,046	9,205	9,358	9,500	9,639	9,778	9,649
Growth Rate (%)	1.9	1.8	1.8	1.8	1.8	1.7	1.6	1.5	1.5	1.4	-1.7
National Accounts											
GDP, current prices (m. LCU)	77,656	85,700	94,028	119,819	140,400	168,034	197,734	216,660	252,107	269,906	267,286
GDP constant (m. LCU)	13,138	13,001	12,968	13,015	12,557	12,783	13,071	13,508	13,622	14,015	13,307
Real GDP Growth Rate (%)	0.9	-1.0	-0.3	0.4	-3.5	1.8	2.2	3.3	0.8	2.9	-5.1
GDP per capita (constant LCU)	1,532	1,492	1,464	1,446	1,373	1,376	1,384	1,407	1,395	1,412	1,350
Gross Capital Formation (m. LCU)	21,208	22,158	23,570	36,758	38,386	46,072	57,861	67,092	72,281	73,161	.
Prices											
GDP Deflator (2005=100)	45	50.1	55.2	70.0	85.0	100.0	114.8	124.0	.	.	.
Annual Change (%)	11.1	11.6	10.0	26.9	21.5	17.6	14.8	8.0	.	.	.
Consumer Price Index (2005=100)	40	46.0	50.5	70.4	86.4	100.0	113.1	122.7	141.8	141.7	149.8
Annual Change (%)	13.7	14.2	9.9	39.3	22.8	15.7	13.1	8.5	15.5	-0.0	5.7
Interest Rate: Deposit Rate, (annual %)	12.1	13.6	9.1	16.7	12.5	4.2	7.8	5.9	2.1	1.1	0.7
Interest Rate: Lending Rate, (annual %)	19.1	20.7	20.8	26.9	29.2	25.0	26.4	23.1	17.8	17.3	17.5
Balance of Payments (millions of US\$)											
Current Account Balance	-114	-132	-89	-45	-63	7	-85	-86	-289	-232	.
Exports, f.o.b.	332	305	274	334	377	460	495	522	490	551	.
Imports, f.o.b.	-1,087	-1,055	-980	-1,116	-1,210	-1,309	-1,548	-1,704	-2,108	-2,032	.
Trade Balance	-755	-750	-706	-782	-834	-849	-1,053	-1,182	-1,618	-1,481	.
Services, net	-110	-121	-123	-165	-210	-399	-399	-423	-403	-399	.
Income, net	-9	-9	-14	-14	-12	-35	7	2	6	13	.
Current Transfers, net	760	749	754	917	993	1,290	1,361	1,517	1,726	1,635	.
Capital Account Balance	0	0	0	0	0	0	0	21	19	910	.
Financial Account Balance	31	84	48	-54	0	-44	55	-62	164	-700	.
Direct Investment, net	13	4	6	14	6	26	161	75	30	38	.
Portfolio Investment, net
Other Investment, net	-39	84	-7	-89	44	-48	4	72	305	-491	.
Reserve Assets	57	-5	49	21	-50	-22	-109	-208	-171	-246	.
Foreign exchange	57	-5	50	20	-49	-22	-98	-211	-171	-143	.
Errors and Omissions	83	48	41	99	63	37	30	127	107	22	.
Debt											
External Public Debt Outstanding (US\$m)	1,043	1,031	1,066	1,210	1,225	1,278	1,346	1,525	1,842	1,078	.
Debt Service/Exports (%)	8.8	5.9	6.8	11.4	19.2	9.4	8.4	10.3	6.7	4.6	.
Government Finance (millions of local currency)											
Revenue	6,367	6,702	7,834	10,674	12,495	18,394	21,180	24,903	27,035	32,204	.
Current revenue	6,170	6,332	7,722	10,503	12,474	16,253	20,413	23,667	26,674	31,304	.
Grants	197	370	113	171	21	2,141	767	1,236	361	900	.
Expense	8,138	8,589	10,377	14,392	16,838	19,247	21,203	28,471	30,346	35,555	.
Current expenditure	6,308	7,011	8,469	10,465	12,911	17,220	19,366	22,428	24,300	33,600	.
Capital expenditure	1,830	1,578	1,908	3,927	3,927	2,027	1,837	6,043	6,046	1,955	.
Overall primary balance	-1,394	-1,659	-2,416	-3,196	-3,412	754	2,295	-2,818	-2,581	-2,032	.
Overall fiscal balance	-1,771	-1,887	-2,542	-3,719	-4,343	-854	-24	-3,569	-3,311	-3,351	.
Total Financing	1,771	1,887	2,542	3,719	4,343	854	24	3,569	3,311	3,351	.
Domestic	2,161	2,197	2,820	-1,514	5,313	3,582	1,619	4,551	2,416	4,318	.
Foreign	-390	-310	-277	5,233	-970	-2,728	-1,595	-983	895	-967	.

7.19 | Honduras selected economic data

	2000	2001	2002	2003	2004	2005	2006	2007	2008	2009	2010
Population											
Population (000)	6,359	6,527	6,694	6,862	7,029	7,193	7,355	7,516	7,676	7,834	7,989
Growth Rate (%)	2.7	2.6	2.5	2.5	2.3	2.3	2.2	2.1	2.1	2.0	1.9
National Accounts											
GDP, current prices (m. LCU)	106,654	118,416	129,167	142,818	161,507	183,748	206,289	234,156	262,421	267,851	290,991
GDP constant (m. LCU)	106,654	109,559	113,672	118,841	126,247	133,886	142,789	151,678	157,920	154,555	158,841
Real GDP Growth Rate (%)	5.7	2.7	3.8	4.5	6.2	6.1	6.7	6.2	4.1	-2.1	2.8
GDP per capita (constant LCU)	17,119	17,229	17,515	17,946	18,687	19,423	20,303	21,137	21,568	20,696	20,862
Gross Capital Formation (m. LCU)	30,171	30,789	31,334	36,106	47,912	50,758	58,466	77,789	93,812	53,123	.
Employment and Wages											
Unemployment Rate (%)	.	4.1	3.9	5.2	6.0	4.2	3.1	2.9	.	.	.
Prices											
GDP Deflator (2005=100)	73	78.8	82.8	87.6	93.2	100.0	105.3	112.3	121.1	126.3	133.5
Annual Change (%)	30.8	8.1	5.1	5.8	6.5	7.3	5.3	6.6	7.8	4.3	5.7
Consumer Price Index (2005=100)	67	73.3	78.9	85.0	91.9	100.0	105.6	112.9	125.8	132.7	138.9
Annual Change (%)	11.0	9.7	7.7	7.7	8.1	8.8	5.6	6.9	11.4	5.5	4.7
Interest Rate: Deposit Rate, (annual %)	15.9	14.5	13.7	11.5	11.1	10.9	9.3	7.8	9.5	10.8	9.8
Interest Rate: Lending Rate, (annual %)	26.8	23.8	22.7	20.8	19.9	18.8	17.4	16.6	17.9	19.4	18.9
Balance of Payments (millions of US\$)											
Current Account Balance	-508	-479	-282	-553	-683	-304	-404	-1,116	-1,800	-449	.
Exports, f.o.b.	3,343	3,423	3,745	3,754	4,534	5,048	5,277	5,784	6,458	5,090	.
Imports, f.o.b.	-3,988	-4,152	-4,382	-4,774	-5,827	-6,545	-7,303	-8,888	-10,509	-7,560	.
Trade Balance	-644	-729	-637	-1,020	-1,293	-1,497	-2,027	-3,104	-4,052	-2,471	.
Services, net	-187	-207	-190	-162	-204	-229	-291	-288	-310	-143	.
Income, net	-215	-258	-301	-362	-451	-474	-537	-395	-420	-487	.
Current Transfers, net	538	715	846	991	1,265	1,895	2,450	2,671	2,982	2,652	.
Capital Account Balance	262	269	142	56	142	860	1,639	1,281	162	149	.
Financial Account Balance	286	254	123	492	500	-352	-903	189	1,363	709	.
Direct Investment, net	375	301	269	391	553	601	669	926	901	500	.
Portfolio Investment, net	-59	-13	-6	-7	-12	-23	-21	-22	-27	56	.
Other Investment, net	25	66	-34	12	469	-583	-1,269	-824	411	-200	.
Reserve Assets	-55	-101	-106	97	-510	-346	-282	109	78	354	.
Foreign exchange	-56	-101	-106	96	-510	-346	-282	109	77	510	.
Errors and Omissions	-39	-44	17	5	41	-204	-332	-353	276	-410	.
Debt											
External Public Debt Outstanding (US\$m)	4,253	3,896	4,097	4,466	4,878	4,137	3,031	1,994	2,303	2,446	.
Debt Service/Exports (%)	9.8	8.5	9.0	9.4	6.1	6.5	5.4	5.2	5.2	6.8	.
Government Finance (millions of local currency)											
Revenue	16,753	19,727	21,141	23,632	27,821	32,344	37,292	44,697	52,043	47,007	.
Current revenue	15,862	18,037	19,776	22,304	26,411	30,092	34,207	40,994	46,591	41,987	.
Capital revenue	11	31	63	0	115	148	49	2	0	0	.
Grants	881	1,658	1,302	1,328	1,295	2,103	3,035	3,702	5,452	5,020	.
Expense	21,769	24,966	26,218	30,399	32,020	36,397	39,580	51,883	58,696	63,669	.
Current expenditure	15,559	17,401	19,607	23,133	23,823	28,132	32,967	42,205	45,939	51,351	.
Capital expenditure	5,870	6,745	5,434	6,530	8,086	8,308	6,884	9,596	12,618	14,145	.
Lending minus repayments	340	821	1,178	736	111	-42	-271	82	139	-1,827	.
Overall primary balance	-2,710	-4,054	-3,780	-5,297	-2,477	-2,107	-245	-5,627	-5,041	-14,653	.
Overall fiscal balance	-5,016	-5,240	-5,077	-6,767	-4,199	-4,054	-2,288	-7,186	-6,653	-16,662	.
Total Financing	5,016	5,240	5,077	6,767	4,199	4,054	2,288	7,145	6,622	16,662	.
Domestic	2,719	1,562	2,756	3,486	-2,032	557	426	4,530	-453	14,030	.
Foreign	2,297	3,678	2,321	3,281	6,232	3,497	1,862	2,615	7,075	2,632	.

7.20 | Jamaica selected economic data

	2000	2001	2002	2003	2004	2005	2006	2007	2008	2009	2010
Population											
Population (000)	2,616	2,641	2,665	2,689	2,713	2,737	2,760	2,782	2,804	2,826	2,847
Growth Rate (%)	1.0	0.9	0.9	0.9	0.9	0.9	0.8	0.8	0.8	0.8	0.8
National Accounts											
GDP, current prices (m. LCU)	385,081	419,345	468,517	542,663	620,259	695,218	783,655	887,417	1,009,674	1,083,448	1,192,789
GDP constant (m. LCU)	450,135	456,189	460,616	476,745	483,630	488,847	503,467	510,677	506,007	490,594	485,059
Real GDP Growth Rate (%)	0.9	1.3	1.0	3.5	1.4	1.1	3.0	1.4	-0.9	-3.0	-1.1
GDP per capita (constant LCU)	175,286	176,203	176,481	181,203	182,909	184,005	188,600	190,402	187,939	181,782	178,496
Gross Capital Formation (m. LCU)	249,125	228,424	.
Employment and Wages											
Unemployment Rate (%)	15.5	15.0	14.3	11.7	11.4	10.9	9.6	9.4	10.6	11.4	.
Prices											
GDP Deflator (2005=100)	60	64.6	71.5	80.0	90.2	100.0	109.4	122.2	140.3	155.3	170.6
Annual Change (%)	10.7	7.5	10.7	11.9	12.7	10.9	9.4	11.6	14.8	10.7	9.8
Consumer Price Index (2005=100)	60	64.6	69.2	76.3	86.7	100.0	108.6	118.7	144.8	158.7	178.7
Annual Change (%)	8.2	7.0	7.1	10.3	13.6	15.3	8.6	9.3	22.0	9.6	12.6
Interest Rate: Deposit Rate, (annual %)	11.6	9.6	8.6	8.5	8.0	7.5	7.0	7.1	7.6	7.0	6.3
Interest Rate: Lending Rate, (annual %)	23.3	20.6	18.5	18.9	18.1	17.4	17.6	17.2	16.8	16.4	20.5
Balance of Payments (millions of US\$)											
Current Account Balance	-367	-759	-1,074	-773	-502	-1,071	-1,183	-2,038	-2,793	-1,126	.
Exports, f.o.b.	1,563	1,454	1,309	1,386	1,602	1,664	2,134	2,363	2,744	1,388	.
Imports, f.o.b.	-3,004	-3,073	-3,180	-3,328	-3,545	-4,246	-5,077	-6,204	-7,547	-4,476	.
Trade Balance	-1,442	-1,618	-1,871	-1,943	-1,944	-2,581	-2,943	-3,841	-4,803	-3,088	.
Services, net	603	383	315	552	578	608	628	425	428	770	.
Income, net	-350	-438	-605	-571	-583	-676	-616	-662	-568	-668	.
Current Transfers, net	821	914	1,087	1,189	1,446	1,578	1,749	2,040	2,150	1,860	.
Capital Account Balance	2	-22	-17	0	2	-18	-28	-36	18	21	.
Financial Account Balance	331	795	1,154	760	521	1,073	1,108	1,733	3,125	967	.
Direct Investment, net	394	525	407	604	542	581	797	751	1,361	480	.
Portfolio Investment, net	-64	30	-196	-286	96	-126	-129	-640	-33	-358	.
Other Investment, net	501	1,085	682	-5	569	845	670	1,183	1,692	802	.
Reserve Assets	-500	-845	260	447	-686	-228	-230	440	105	44	.
Foreign exchange	-501	-845	260	447	-686	-228	-230	440	105	374	.
Errors and Omissions	34	-14	-63	13	-22	17	103	340	-350	138	.
Debt											
External Public Debt Outstanding (US\$m)	3,768	4,317	4,611	4,542	5,253	5,524	6,144	6,710	6,904	6,664	.
Debt Service/Exports (%)	18.6	20.8	24.7	22.4	20.4	22.4	16.0	23.4	20.1	33.9	.
Government Finance (millions of local currency)											
Revenue	104,771	108,719	118,266	149,902	169,701	180,941	214,001	249,512	272,460	241,766	.
Taxes	84,659	90,985	103,126	133,208	150,482	162,576	188,354	219,518	246,217	209,891	.
Grants	1,413	1,941	0	586	5,393	3,226	5,710	5,772	8,935	4,184	.
Expense	111,098	121,983	145,944	173,248	195,100	196,545	230,955	275,223	325,731	412,992	.
Compensation of employees	35,597	43,030	56,491	60,463	26,381	29,164	36,445	40,568	52,364	57,700	.
Use of goods and services	21,535	19,588	.	24,615	9,099	11,644	12,657	15,905	19,095	18,718	.
Interest	43,335	51,550	60,738	88,170	93,636	84,710	97,054	103,480	125,305	188,716	.
Grants	-891	1,295	169	0	0	0	0	0	0	0	.
Social benefits	0	0	0	0	7,517	8,555	9,585	12,045	13,306	13,828	.
Total outlays	113,468	123,577	148,535	171,668	201,575	208,052	245,051	300,414	355,126	433,499	.
Public debt transactions	43,335	51,550	60,738	88,170	93,636	84,710	97,054	103,480	125,305	188,716	.

7.21 | Mexico

selected economic data

	2000	2001	2002	2003	2004	2005	2006	2007	2008	2009	2010
Population											
Population (000)	99,927	101,247	102,480	103,718	104,960	106,203	107,450	108,701	109,955	111,212	112,469
Growth Rate (%)	1.4	1.2	1.2	1.2	1.2	1.2	1.2	1.2	1.1	1.1	1.1
National Accounts											
GDP, current prices (b. LCU)	6,353	6,633	6,812	7,555	8,572	9,247	10,373	11,313	12,194	11,922	13,130
GDP constant (b. LCU)	7,520	7,450	7,456	7,558	7,862	8,113	8,531	8,807	8,940	8,393	8,856
Real GDP Growth Rate (%)	6.0	-0.9	0.1	1.4	4.0	3.2	5.2	3.2	1.5	-6.1	5.5
GDP per capita (constant LCU)	76,756	74,701	73,877	74,094	76,331	78,046	81,354	83,253	83,797	78,039	81,530
Gross Capital Formation (b. LCU)	1,312	1,212	1,295	1,730	2,114	2,195	2,720	2,892	3,288	2,643	.
Employment and Wages											
Unemployment Rate (%)	2.6	2.5	2.9	3.0	3.7	3.5	3.2	3.4	3.5	5.2	.
Real Average Wage (2000=100)	100	106.7	108.7	110.1	110.4	110.7	112.3	113.4	115.9	116.6	.
Prices											
Consumer Price Index (2005=100)	79	83.7	87.9	91.9	96.2	100.0	103.6	107.7	113.3	119.3	124.2
Annual Change (%)	9.5	6.4	5.0	4.5	4.7	4.0	3.6	4.0	5.1	5.3	4.2
Interest Rate: Deposit Rate, (annual %)	8.3	6.2	3.8	3.1	2.7	3.5	3.3	3.2	3.0	2.0	1.2
Interest Rate: Lending Rate, (annual %)	16.9	12.8	8.2	7.0	7.4	9.7	7.5	7.6	8.7	7.1	5.3
Balance of Payments (millions of US\$)											
Current Account Balance	-18,743	-17,714	-14,157	-7,161	-5,237	-5,080	-4,487	-8,851	-16,339	-6,352	-5,626
Exports, f.o.b.	166,121	158,780	161,046	164,766	187,999	214,233	249,925	271,875	291,343	229,704	298,473
Imports, f.o.b.	-174,458	-168,396	-168,679	-170,546	-196,810	-221,820	-256,058	-281,949	-308,603	-234,385	-301,482
Trade Balance	-8,337	-9,617	-7,633	-5,779	-8,811	-7,587	-6,133	-10,074	-17,261	-4,681	-3,009
Services, net	-3,605	-4,493	-4,921	-5,524	-5,732	-5,303	-6,441	-6,455	-7,055	-8,168	-10,159
Income, net	-13,795	-12,943	-11,871	-11,458	-9,456	-14,327	-17,862	-18,718	-17,486	-15,033	-13,963
Current Transfers, net	6,994	9,338	10,269	15,601	18,763	22,138	25,949	26,396	25,462	21,531	21,504
Capital Account Balance	0	0	0	0	0	0	0	0	0	0	0
Financial Account Balance	17,044	20,954	16,230	9,542	10,087	9,426	-1,390	11,800	20,223	13,583	12,165
Direct Investment, net	18,110	25,445	22,892	14,989	20,368	17,648	14,294	21,478	25,138	8,315	4,335
Portfolio Investment, net	1,973	5,632	643	4,615	3,298	4,477	-5,872	8,617	2,710	19,144	39,478
Other Investment, net	-217	-2,798	-201	-611	-9,518	-5,526	-10,800	-7,984	-175	-8,479	-8,889
Reserve Assets	-2,822	-7,325	-7,104	-9,451	-4,061	-7,173	989	-10,311	-7,450	-5,397	-22,759
Foreign exchange	-4,077	-9,346	-5,852	-8,307	-5,140	-9,914	-2,152	-10,785	-8,085	-481	-20,854
Errors and Omissions	1,699	-3,239	-2,074	-2,381	-4,849	-4,347	5,877	-2,949	-3,884	-7,231	-6,539
Debt											
External Public Debt Outstanding (US\$m)	81,488	94,160	99,434	106,660	108,507	108,482	96,029	105,376	113,950	99,374	.
Debt Service/Exports (%)	31.5	26.8	24.7	23.3	24.3	19.1	20.6	13.4	13.0	16.0	.
Government Finance (millions of local currency)											
Revenue	868,268	939,115	989,353	1,132,985	1,270,211	1,412,505	1,558,808	1,711,221	2,049,936	2,000,393	.
Current revenue	868,268	939,115	989,354	1,132,985	1,270,211	1,412,505	1,558,808	1,711,221	2,049,936	2,000,393	.
Expense	952,083	996,951	1,124,451	1,232,942	1,373,362	1,513,210	1,739,467	1,929,660	2,242,461	2,261,932	.
Current expenditure	870,291	904,603	987,039	1,091,003	1,172,207	1,269,853	1,447,060	1,597,686	1,817,332	1,947,105	.
Capital expenditure	81,792	92,348	137,412	141,939	201,155	243,357	292,407	331,974	425,129	314,826	.
Overall primary balance	32,128	69,140	-20,537	29,288	26,692	44,284	-26,824	-57,781	-22,446	-61,349	.
Overall fiscal balance	-83,815	-57,836	-135,098	-99,957	-103,151	-100,705	-180,659	-218,440	-192,525	-261,538	.

7.22 | Nicaragua selected economic data

	2000	2001	2002	2003	2004	2005	2006	2007	2008	2009	2010
Population											
Population (000)	4,866	4,952	5,036	5,116	5,193	5,267	5,338	5,408	5,476	5,541	5,604
Growth Rate (%)	1.8	1.7	1.6	1.5	1.5	1.4	1.3	1.3	1.2	1.2	1.1
National Accounts											
GDP, current prices (m. LCU)	50,558	55,824	58,072	62,710	72,019	82,513	92,936	104,456	123,442	126,386	139,916
GDP constant (m. LCU)	27,223	28,029	28,241	28,953	30,491	31,796	33,117	34,137	35,079	34,563	36,112
Real GDP Growth Rate (%)	4.1	3.0	0.8	2.5	5.3	4.3	4.2	3.1	2.8	-1.5	4.5
GDP per capita (constant LCU)	5,829	5,994	6,101	6,190	6,019	6,210
Gross Capital Formation (m. LCU)	15,073	15,580	14,958	16,021	19,938	24,058	27,365	33,564	42,076	29,324	.
Employment and Wages											
Unemployment Rate (%)	9.8	6.4	12.2	8.0	6.7	5.6	5.3	5.0	.	.	.
Real Average Wage (2000=100)	100	101.0	104.5	106.5	104.2	104.5	105.9	104.0	100.1	106.6	.
Prices											
GDP Deflator (2005=100)	72	76.7	79.2	83.5	91.0	100.0	108.2	118.0	134.6	141.1	.
Annual Change (%)	8.6	7.2	3.2	5.3	9.1	9.9	8.2	9.0	14.0	4.9	.
Consumer Price Index (2005=100)	73	77.0	79.9	84.1	91.2	100.0	109.1	121.3	145.3	150.7	158.9
Annual Change (%)	7.1	6.0	3.8	5.3	8.5	9.6	9.1	11.1	19.8	3.7	5.5
Interest Rate: Deposit Rate, (annual %)	10.8	11.6	7.8	5.6	4.7	4.0	4.9	6.1	6.6	6.0	3.0
Interest Rate: Lending Rate, (annual %)	18.1	18.6	18.3	15.5	13.5	12.1	11.6	13.0	13.2	14.0	13.3
Balance of Payments (millions of US\$)											
Current Account Balance	-936	-820	-784	-706	-687	-784	-838	-1,224	-1,570	-828	-963
Exports, f.o.b.	881	895	914	1,056	1,369	1,654	1,932	2,186	2,530	2,390	3,157
Imports, f.o.b.	-1,802	-1,805	-1,853	-2,027	-2,457	-2,956	-3,404	-3,989	-4,731	-3,929	-4,792
Trade Balance	-921	-910	-939	-971	-1,088	-1,302	-1,472	-1,803	-2,201	-1,540	-1,636
Services, net	-129	-141	-130	-119	-123	-140	-156	-283	-269	-148	-222
Income, net	-296	-256	-246	-241	-231	-199	-213	-212	-240	-259	-278
Current Transfers, net	410	486	530	625	755	857	1,003	1,075	1,140	1,118	1,173
Capital Account Balance	344	836	769	753	1,909	479	1,590	2,903	437	557	186
Financial Account Balance	432	-243	344	53	-818	367	-351	-1,643	995	310	794
Direct Investment, net	267	150	204	201	250	241	287	382	626	434	508
Portfolio Investment, net
Other Investment, net	150	-503	209	-93	-909	132	-459	-1,857	400	135	508
Reserve Assets	16	110	-69	-55	-160	-6	-179	-167	-32	-259	-222
Foreign exchange	16	109	-69	-54	-166	-6	-179	-167	-32	-259	-222
Errors and Omissions	160	227	-328	-100	-403	-63	-401	-37	139	-39	-17
Debt											
External Public Debt Outstanding (US\$m)	5,380	5,335	5,448	5,758	3,994	3,899	3,196	2,147	2,230	2,461	.
Debt Service/Exports (%)	25.3	29.8	13.5	14.6	7.8	8.6	6.8	14.7	14.0	17.2	.
Government Finance (millions of local currency)											
Revenue	9,415	8,929	10,086	12,230	14,604	17,431	21,160	24,491	27,042	26,939	.
Current revenue	7,537	7,646	8,563	10,151	12,231	14,708	17,512	20,579	23,468	23,859	.
Capital revenue	4	0	0	0	0	0	0	0	0	0	.
Grants	1,874	1,284	1,522	2,079	2,374	2,723	3,648	3,912	3,574	3,080	.
Expense	11,789	13,055	11,501	13,994	16,184	18,925	21,133	24,050	28,480	29,793	.
Current expenditure	6,667	10,482	9,085	10,573	11,932	14,510	17,911	20,124	25,032	26,158	.
Capital expenditure	5,105	2,573	2,416	3,420	4,253	4,415	3,222	3,926	3,448	3,634	.
Lending minus repayments	17
Overall primary balance	-1,322	-2,914	-129	155	-102	67	1,712	2,021	9	-1,143	.
Overall fiscal balance	-2,357	-4,125	-1,416	-1,764	-1,580	-1,494	28	441	-1,438	-2,854	.
Total Financing	2,357	4,125	1,416	1,764	1,580	1,494	-28	-441	1,438	2,854	.
Domestic	-842	2,063	-605	-1,556	-3,537	-1,974	-2,927	-3,195	-427	-1,165	.
Foreign	1,738	1,563	1,794	3,112	4,093	3,297	2,676	2,754	1,865	4,017	.
Other	1,461	500	227	208	1,024	171	224	1	0	2	.

7.23 | Panama selected economic data

	2000	2001	2002	2003	2004	2005	2006	2007	2008	2009	2010
Population											
Population (000)	2,900	2,952	3,003	3,054	3,104	3,155	3,206	3,258	3,310	3,360	3,411
Growth Rate (%)	1.8	1.8	1.7	1.7	1.6	1.6	1.6	1.6	1.5	1.5	1.5
National Accounts											
GDP, current prices (m. LCU)	11,621	11,808	12,272	12,933	14,179	15,465	17,137	19,794	23,001	24,080	26,778
GDP constant (m. LCU)	11,371	11,436	11,691	12,183	13,099	14,041	15,239	17,084	18,813	19,414	20,871
Real GDP Growth Rate (%)	2.7	0.6	2.2	4.2	7.5	7.2	8.5	12.1	10.1	3.2	7.5
GDP per capita (constant LCU)	3,857	3,807	3,821	3,909	4,129	4,350	4,640	5,110	5,528	5,604	5,918
Gross Capital Formation (m. LCU)	2,805	2,083	1,933	2,457	2,652	2,839	3,335	4,579	5,366	6,128	.
Employment and Wages											
Unemployment Rate (%)	13.8	14.7	14.1	13.6	12.4	10.3	9.1	6.8	5.9	.	.
Real Average Wage (2000=100)	100	98.8	95.8	95.3	94.5	93.4	95.3	96.5	95.9	95.5	.
Prices											
GDP Deflator (2005=100)	93	93.7	95.3	96.4	98.3	100.0	102.1	105.2	110.4	112.8	.
Annual Change (%)	-1.2	1.0	1.7	1.1	2.0	1.7	2.1	3.0	4.9	2.2	.
Consumer Price Index (2005=100)	95	95.4	96.4	96.7	96.9	100.0	102.1	106.4	115.7	118.5	122.6
Annual Change (%)	1.5	0.3	1.0	0.4	0.2	3.2	2.1	4.2	8.8	2.4	3.5
Interest Rate: Deposit Rate, (annual %)	7.1	6.8	5.0	4.0	2.2	2.7	3.8	4.8	3.5	3.5	3.0
Interest Rate: Lending Rate, (annual %)	10.5	11.0	10.6	9.9	8.8	8.7	8.4	8.3	8.2	8.2	7.7
Balance of Payments (millions of US\$)											
Current Account Balance	-673	-170	-96	-537	-1,003	-1,022	-448	-1,407	-2,722	-44	-2,953
Exports, f.o.b.	5,839	5,992	5,315	5,072	6,080	7,375	8,475	9,334	10,323	11,133	11,330
Imports, f.o.b.	-6,981	-6,689	-6,350	-6,274	-7,617	-8,933	-10,190	-12,524	-14,869	-13,256	-15,946
Trade Balance	-1,143	-696	-1,035	-1,202	-1,537	-1,558	-1,715	-3,190	-4,546	-2,123	-4,615
Services, net	854	890	968	1,240	1,337	1,420	2,273	2,836	3,155	3,329	3,333
Income, net	-560	-590	-272	-809	-1,020	-1,126	-1,258	-1,306	-1,570	-1,460	-1,861
Current Transfers, net	177	226	244	234	217	242	253	253	238	210	191
Capital Account Balance	2	2	0	10	9	16	15	44	57	23	43
Financial Account Balance	408	667	50	437	884	1,364	292	1,839	2,070	238	2,162
Direct Investment, net	624	467	99	818	1,019	918	2,557	1,777	2,196	1,773	2,363
Portfolio Investment, net	91	-3	90	64	125	-701	-501	-632	-474	407	-850
Other Investment, net	-414	826	-3	-713	-657	1,670	-1,602	1,304	928	-1,327	306
Reserve Assets	108	-623	-136	268	397	-523	-162	-610	-580	-614	343
Foreign exchange	-41	-659	-119	278	422	-521	-149	-621	-543	-303	602
Errors and Omissions	262	-499	45	90	110	-358	141	-476	595	-218	749
Debt											
External Public Debt Outstanding (US\$m)	5,696	6,320	6,398	6,475	7,209	7,487	8,683	9,175	9,610	11,282	.
Debt Service/Exports (%)	9.4	12.2	19.5	11.2	14.3	17.7	22.1	5.6	9.3	5.5	.
Government Finance (millions of local currency)											
Revenue	2,114	2,088	2,067	1,998	2,042	2,345	3,187	3,805	4,558	4,460	.
Current revenue	2,109	2,029	1,977	1,962	2,024	2,339	3,163	3,751	4,231	4,377	.
Capital revenue	1	59	90	36	18	7	23	23	244	53	.
Grants	4	1	0	0	0	0	0	31	83	30	.
Expense	2,243	2,288	2,306	2,488	2,810	2,951	3,151	3,565	4,494	4,817	.
Current expenditure	1,966	1,968	1,973	2,082	2,355	2,566	2,716	2,769	3,201	3,285	.
Capital expenditure	277	320	333	406	455	385	435	796	1,294	1,532	.
Overall primary balance	356	302	270	71	-175	76	761	917	782	346	.
Overall fiscal balance	-129	-199	-238	-489	-768	-606	36	240	64	-357	.

7.24 | Paraguay selected economic data

	2000	2001	2002	2003	2004	2005	2006	2007	2008	2009	2010
Population											
Population (000)	5,418	5,523	5,627	5,729	5,828	5,926	6,020	6,113	6,203	6,291	6,376
Growth Rate (%)	2.0	1.9	1.8	1.8	1.7	1.6	1.6	1.5	1.4	1.4	1.3
National Accounts											
GDP, current prices (b. LCU)	24,737	26,466	29,105	35,666	41,522	46,169	52,270	61,512	73,622	70,705	84,836
GDP constant (b. LCU)	13,807	14,092	14,085	14,626	15,231	15,666	16,346	17,452	18,468	17,758	20,470
Real GDP Growth Rate (%)	-3.3	2.1	-0.0	3.8	4.1	2.9	4.3	6.8	5.8	-3.8	15.3
GDP per capita (constant LCU)	2,601,313	2,602,334	2,550,468	2,597,856	2,671,311	2,701,741	2,763,736	2,892,746	3,001,276	2,829,245	3,197,321
Gross Capital Formation (b. LCU)	4,653	4,954	5,441	7,106	8,640	9,128	10,270	11,096	13,289	10,975	.
Employment and Wages											
Unemployment Rate (%)	7.6	7.6	10.7	7.9	7.4	5.8	6.7	5.6	5.6	.	.
Real Average Wage (2000=100)	100	101.4	96.3	95.6	97.2	98.2	98.8	101.1	100.4	104.7	.
Prices											
GDP Deflator (2005=100)	61	63.7	70.1	82.7	92.5	100.0	108.5	119.6	135.3	135.1	134.0
Annual Change (%)	12.4	4.8	10.0	18.0	11.8	8.1	8.5	10.2	13.1	-0.1	-0.8
Consumer Price Index (2005=100)	66	71.1	78.6	89.7	93.6	100.0	109.6	118.5	130.5	133.9	140.1
Annual Change (%)	9.0	7.3	10.5	14.2	4.3	6.8	9.6	8.1	10.2	2.6	4.7
Interest Rate: Deposit Rate, (annual %)	15.7	16.2	22.9	15.8	5.1	1.7	6.7	5.0	3.1	1.5	1.2
Interest Rate: Lending Rate, (annual %)	26.8	28.3	38.7	50.0	33.5	29.9	30.1	25.0	25.8	28.3	26.0
Balance of Payments (millions of US\$)											
Current Account Balance	-163	-266	93	129	143	16	128	184	-304	43	-596
Exports, f.o.b.	2,329	1,890	1,858	2,170	2,861	3,352	4,401	5,652	7,798	5,805	8,312
Imports, f.o.b.	-2,866	-2,504	-2,138	-2,446	-3,105	-3,814	-5,022	-6,185	-8,844	-6,837	-9,839
Trade Balance	-537	-614	-280	-276	-244	-462	-621	-533	-1,046	-1,031	-1,527
Services, net	175	165	214	245	327	313	414	499	558	868	792
Income, net	22	16	43	-4	-134	-58	-92	-155	-231	-312	-382
Current Transfers, net	177	167	116	165	194	224	426	373	414	519	521
Capital Account Balance	3	15	4	15	16	20	30	28	33	47	40
Financial Account Balance	408	198	164	-102	-252	178	-235	-0	219	-297	440
Direct Investment, net	98	78	5	22	32	47	167	199	275	201	423
Portfolio Investment, net	3	1	-0	-0	-0
Other Investment, net	92	74	76	178	-105	277	-15	528	339	418	336
Reserve Assets	215	45	84	-301	-179	-146	-387	-727	-394	-915	-319
Foreign exchange	177	49	88	-301	-179	-152	-382	-727	-375	-800	-319
Errors and Omissions	-248	53	-261	-43	93	-214	77	-212	52	207	117
Debt											
External Public Debt Outstanding (US\$m)	2,060	1,981	2,045	2,201	2,430	2,265	2,235	2,195	2,263	2,308	.
Debt Service/Exports (%)	11.1	13.3	13.0	12.3	13.1	11.3	7.7	6.1	5.0	6.1	.
Government Finance (millions of local currency)											
Revenue	4,247,721	4,974,574	5,079,863	6,066,457	7,650,259	8,462,801	9,587,929	10,837,279	12,747,000	13,880,000	.
Current revenue	4,226,891	4,939,627	5,024,533	6,012,258	7,605,114	8,367,770	9,504,611	10,596,043	12,447,000	13,552,000	.
Capital revenue	996	2,538	6,732	6,586	11,868	32,783	31,437	24,883	27,000	251,000	.
Grants	19,834	32,409	48,598	47,612	33,277	62,248	51,881	216,353	273,000	77,000	.
Expense	5,373,614	5,292,714	6,024,293	6,211,598	6,991,683	8,077,761	9,323,517	10,244,458	10,916,000	13,835,000	.
Current expenditure	4,143,692	4,378,218	4,749,198	4,984,789	5,365,945	6,217,587	7,138,093	7,964,136	8,961,000	10,607,000	.
Capital expenditure	1,117,971	923,959	1,291,140	1,321,205	1,657,051	1,889,399	2,204,625	2,310,153	1,989,000	3,255,000	.
Lending minus repayments	111,951	-9,462	-16,045	-94,397	-31,313	-29,226	-19,201	-29,831	-34,000	-27,000	.
Overall primary balance	-827,648	46,110	-507,683	333,691	1,132,815	924,732	780,669	1,105,434	2,276,000	479,000	.
Overall fiscal balance	-1,125,893	-318,141	-944,431	-145,141	658,577	385,041	264,412	592,821	1,831,000	45,000	.
Total Financing	1,125,893	318,141	944,431	145,141	-658,577	-385,041	-264,412	-592,821	-1,831,000	-45,000	.
Domestic	994,660	377,702	741,878	-543,269	-646,925	-91,931	24,455	-308,001	-1,792,000	-119,000	.
Foreign	465,162	-29,123	246,763	531,772	-80,635	-309,611	-151,511	-211,511	-360,000	66,000	.
Other	-333,930	-30,438	-44,210	156,638	68,984	16,501	-137,356	-73,308	321,000	8,000	.

7.25 | Peru

selected economic data

	2000	2001	2002	2003	2004	2005	2006	2007	2008	2009	2010
Population											
Population (000)	25,797	26,142	26,480	26,809	27,130	27,442	27,749	28,050	28,348	28,647	28,948
Growth Rate (%)	1.4	1.3	1.3	1.2	1.2	1.1	1.1	1.1	1.1	1.1	1.0
National Accounts											
GDP, current prices (m. LCU)	186,141	189,213	199,650	213,425	237,902	261,653	302,255	335,528	371,073	382,318	433,688
GDP constant (m. LCU)	121,057	121,317	127,398	132,545	139,141	148,640	160,145	174,407	191,505	193,155	210,143
Real GDP Growth Rate (%)	3.0	0.2	5.0	4.0	5.0	6.8	7.7	8.9	9.8	0.9	8.8
GDP per capita (constant LCU)	4,802	4,739	4,901	5,022	5,191	5,461	5,794	6,180	6,683	6,637	7,111
Gross Capital Formation (m. LCU)	37,531	35,295	37,841	40,129	42,704	46,809	60,580	77,104	99,204	88,192	.
Employment and Wages											
Unemployment Rate (%)	7.4	7.9	7.7	8.4	9.0	8.7	7.4	6.7	6.8	.	.
Real Average Wage (2000=100)	100	99.1	103.7	105.3	106.5	104.4	105.7	103.8	106.1	106.4	.
Prices											
GDP Deflator (2005=100)	87	88.2	88.8	90.8	96.8	100.0	106.9	109.3	110.5	112.1	117.3
Annual Change (%)	3.6	1.4	0.6	2.3	6.6	3.3	6.9	2.2	1.2	1.4	4.7
Consumer Price Index (2005=100)	91	92.7	92.8	94.9	98.4	100.0	102.0	103.8	109.8	113.0	114.8
Annual Change (%)	3.8	2.0	0.2	2.3	3.7	1.6	2.0	1.8	5.8	2.9	1.5
Interest Rate: Deposit Rate, (annual %)	9.8	7.5	3.5	3.1	2.4	2.6	3.2	3.2	3.5	2.8	1.5
Interest Rate: Lending Rate, (annual %)	30.0	25.0	20.8	21.0	24.7	25.5	23.9	22.9	23.7	21.0	19.0
Balance of Payments (millions of US\$)											
Current Account Balance	-1,546	-1,203	-1,110	-949	19	1,148	2,872	1,460	-5,318	211	-2,315
Exports, f.o.b.	6,955	7,026	7,714	9,091	12,809	17,368	23,830	28,094	31,019	26,962	35,565
Imports, f.o.b.	-7,358	-7,204	-7,393	-8,205	-9,805	-12,082	-14,844	-19,591	-28,449	-21,011	-28,815
Trade Balance	-403	-179	321	886	3,004	5,286	8,986	8,504	2,569	5,951	6,750
Services, net	-735	-963	-994	-900	-732	-834	-737	-1,192	-2,056	-1,144	-2,037
Income, net	-1,410	-1,101	-1,457	-2,144	-3,686	-5,076	-7,562	-8,359	-8,774	-7,484	-10,053
Current Transfers, net	1,001	1,040	1,019	1,209	1,433	1,772	2,185	2,508	2,943	2,887	3,026
Capital Account Balance	-258	-154	-98	-48	-59	-22	-100	-67	-64	-42	-96
Financial Account Balance	1,156	1,110	1,002	232	-157	-1,447	-2,366	-1,255	5,505	455	1,391
Direct Investment, net	810	1,070	2,156	1,275	1,599	2,579	3,467	5,425	6,188	5,178	7,113
Portfolio Investment, net	-406	-372	1,408	-76	820	1,762	-1,612	3,639	461	-2,337	4,928
Other Investment, net	313	687	-1,710	-451	-133	-4,317	-1,011	72	2,369	-443	325
Reserve Assets	440	-275	-852	-516	-2,443	-1,471	-3,210	-10,391	-3,512	-1,943	-10,975
Foreign exchange	264	-265	-678	-469	-2,406	-1,379	-3,066	-10,165	-3,432	-712	-10,623
Errors and Omissions	648	247	207	764	197	322	-407	-138	-123	-624	1,019
Debt											
External Public Debt Outstanding (US\$m)	19,199	18,866	20,900	23,018	24,666	22,500	22,150	19,820	19,384	20,791	.
Debt Service/Exports (%)	27.8	24.0	36.0	23.3	18.4	28.4	13.7	26.5	13.3	11.8	.
Government Finance (millions of local currency)											
Revenue	28,240	27,350	28,930	31,929	35,570	41,433	53,076	61,207	68,351	61,097	.
Current revenue	27,705	27,059	28,559	31,568	35,381	41,046	52,715	60,822	67,957	60,711	.
Capital revenue	535	291	371	361	189	386	361	385	394	386	.
Expense	33,437	32,640	33,194	35,642	38,547	43,263	48,673	55,023	60,111	68,143	.
Current expenditure	28,178	28,409	29,238	31,562	34,252	38,371	42,665	47,817	51,228	53,379	.
Capital expenditure	5,259	4,231	3,956	4,080	4,295	4,891	6,008	7,206	8,883	14,764	.
Overall primary balance	-1,120	-1,230	-310	478	1,405	2,965	9,816	11,709	13,368	-2,182	.
Overall fiscal balance	-5,197	-5,290	-4,263	-3,713	-2,977	-1,830	4,403	6,184	8,240	-7,045	.
Total Financing	5,197	5,290	4,263	3,713	2,977	1,830	-4,403	-6,184	-8,240	7,045	.
Domestic	1,666	2,092	-1,236	146	-1,251	4,766	-2,875	198	-4,313	2,706	.
Foreign	2,104	2,065	3,997	3,386	3,838	-3,121	-1,832	-6,831	-4,083	4,238	.
Other	1,427	1,134	1,503	181	389	185	304	449	156	102	.

7.26 | Suriname selected economic data

	2000	2001	2002	2003	2004	2005	2006	2007	2008	2009	2010
Population											
Population (000)	464	472	480	488	496	504	512	521	530	538	546
Growth Rate (%)	1.7	1.7	1.8	1.6	1.6	1.5	1.7	1.8	1.6	1.5	1.4
National Accounts											
GDP, current prices (m. LCU)	1,251	1,819	2,570	3,314	4,058	4,899	5,851	6,641	8,414	8,926	10,108
GDP constant (m. LCU)	4	4	5	5	5	5	6	6	6	6	7
Real GDP Growth Rate (%)	-0.1	4.5	2.8	6.3	8.5	4.5	3.8	5.1	4.7	3.1	4.4
GDP per capita (constant LCU)	9	9	9	10	11	11	11	12	12	12	13
Gross Capital Formation (m. LCU)	146	481	558	755	911	1,218
Employment and Wages											
Unemployment Rate (%)	9.5
Prices											
Consumer Price Index (2005=100)	42	58.2	67.3	82.7	91.0	100.0	111.3	118.4	135.8	135.7	145.1
Annual Change (%)	59.4	38.6	15.5	23.0	10.0	9.9	11.3	6.4	14.7	-0.1	6.9
Interest Rate: Deposit Rate, (annual %)	15.5	11.9	9.0	8.3	8.3	7.3	6.6	6.4	6.3	6.4	6.2
Interest Rate: Lending Rate, (annual %)	29.0	25.7	22.2	21.0	20.4	17.4	15.6	13.8	12.2	11.7	11.6
Balance of Payments (millions of US\$)											
Current Account Balance	32	-84	-131	-159	-138	-144	110	185	353	210	692
Exports, f.o.b.	399	437	369	488	782	1,212	1,174	1,359	1,708	1,404	2,069
Imports, f.o.b.	-246	-297	-322	-458	-740	-1,189	-1,013	-1,185	-1,350	-1,296	-1,443
Trade Balance	153	140	47	30	42	22	161	174	358	109	626
Services, net	-125	-115	-128	-136	-130	-148	-35	-73	-114	1	-17
Income, net	6	-108	-42	-49	-63	-40	-52	8	21	5	-3
Current Transfers, net	-2	-1	-9	-5	13	22	36	76	87	94	87
Capital Account Balance	2	2	6	9	19	15	19	8	32	87	54
Financial Account Balance	-154	26	-20	-45	-100	-40	-275	-355	-143	-255	-1,102
Direct Investment, net	-148	-27	-74	-76	-37	28	-163	-247	-234	-93	-256
Portfolio Investment, net	-2	-0	-1	-17	-11	-12
Other Investment, net	9	131	36	40	14	-47	-17	71	160	43	-800
Reserve Assets	-15	-78	19	-8	-77	-19	-94	-177	-52	-193	-34
Foreign exchange	-6	-76	20	-6	-76	-13	-87	-166	-45	-47	-7
Errors and Omissions	120	56	145	195	219	169	145	162	-242	-42	356

7.27 | Trinidad and Tobago selected economic data

	2000	2001	2002	2003	2004	2005	2006	2007	2008	2009	2010
Population											
Population (000)	1,252	1,249	1,246	1,242	1,239	1,237	1,235	1,233	1,231	1,230	1,229
Growth Rate (%)	-0.2	-0.2	-0.3	-0.3	-0.2	-0.2	-0.2	-0.1	-0.1	-0.1	-0.1
National Accounts											
GDP, current prices (m. LCU)	51,371	55,007	56,290	71,169	83,652	100,682	115,951	136,953	170,938	124,116	130,981
GDP constant (m. LCU)	51,371	53,512	57,759	66,100	71,355	75,786	85,795	89,874	92,001	88,744	88,781
Real GDP Growth Rate (%)	7.6	4.2	7.9	14.4	8.0	6.2	13.2	4.8	2.4	-3.5	0.0
Gross Capital Formation (m. LCU)	10,278	14,694	12,736	17,926	16,175	29,037	18,146	17,666	19,418	.	.
Employment and Wages											
Unemployment Rate (%)	12.1	10.8	10.4	10.5	8.3	8.0	6.3	5.5	4.6	5.3	.
Prices											
GDP Deflator (2005=100)	75	77.0	73.0	80.1	87.8	100.0	101.2	114.1	139.2	104.8	106.8
Annual Change (%)	12.0	2.8	-5.2	9.8	9.6	13.9	1.2	12.8	21.9	-24.7	2.0
Consumer Price Index (2005=100)	79	83.4	86.9	90.2	93.6	100.0	108.3	116.9	130.9	140.1	154.8
Annual Change (%)	3.6	5.5	4.1	3.8	3.7	6.9	8.3	7.9	12.0	7.0	10.5
Interest Rate: Deposit Rate, (annual %)	8.2	7.7	4.8	2.9	2.8	2.2	4.8	5.9	7.4	3.4	1.5
Interest Rate: Lending Rate, (annual %)	16.5	15.7	12.5	11.2	9.3	9.1	10.9	11.8	12.4	11.9	9.3
Balance of Payments (millions of US\$)											
Current Account Balance	544	416	76	985	1,647	3,594	7,271	5,364	8,519	1,614	.
Exports, f.o.b.	4,290	4,304	3,920	5,205	6,403	9,672	14,217	13,391	18,686	9,175	.
Imports, f.o.b.	-3,322	-3,586	-3,682	-3,912	-4,894	-5,725	-6,517	-7,670	-9,622	-6,973	.
Trade Balance	969	718	238	1,293	1,509	3,948	7,700	5,721	9,064	2,202	.
Services, net	166	204	264	314	480	356	451	546	610	382	.
Income, net	-629	-539	-480	-681	-397	-760	-936	-964	-1,202	-997	.
Current Transfers, net	38	33	55	59	56	50	55	60	47	27	.
Capital Account Balance	0	0	0	0	0	0	0	0	0	0	.
Financial Account Balance	-267	-149	198	-1,005	-1,570	-3,441	-7,038	-5,038	-8,696	-1,630	.
Direct Investment, net	654	685	684	583	973	599	513	830	2,101	709	.
Portfolio Investment, net	-30	-206	-70	-509	-690	-258	-200	-252	-82	-120	.
Other Investment, net	-451	-157	-367	-831	-1,321	-2,305	-6,232	-4,075	-8,010	-2,931	.
Reserve Assets	-441	-471	-49	-248	-532	-1,476	-1,119	-1,541	-2,706	713	.
Foreign exchange	-441	-471	-49	-248	-532	-1,476	-1,119	-1,541	-2,706	1,134	.
Errors and Omissions	-277	-267	-275	20	-77	-153	-233	-326	177	16	.
Government Finance (millions of local currency)											
Revenue	.	14,938	14,649	18,235	21,878	30,865	40,311	41,693	59,007	.	.
Taxes	.	12,168	11,514	15,160	18,425	26,559	35,084	35,601	51,689	.	.
Social contributions	.	789	833	906	1,020	1,246	1,437	1,667	2,207	.	.
Grants	.	10	2	3	1	3	1	5	15	.	.
Expense	.	13,126	14,016	15,728	18,921	22,807	34,213	33,570	46,332	.	.
Compensation of employees	.	4,808	5,298	5,812	6,238	7,179	7,435	8,814	9,957	.	.
Use of goods and services	.	1,952	2,005	2,471	3,418	4,337	5,421	5,720	6,367	.	.
Interest	.	2,383	2,409	2,592	2,396	2,542	2,453	2,698	2,967	.	.
Subsidies	.	90	92	114	141	343	292	221	201	.	.
Grants	.	1,798	2,062	2,347	2,806	3,588	6,508	7,204	8,146	.	.
Social benefits	.	1,924	1,981	2,199	3,650	4,505	5,577	6,080	9,035	.	.
Total outlays	.	13,872	14,712	16,658	20,274	25,091	38,171	40,784	55,236	.	.
Public debt transactions	.	2,383	2,409	2,592	2,396	2,542	2,453	2,698	2,967	.	.

7.28 | Uruguay selected economic data

	2000	2001	2002	2003	2004	2005	2006	2007	2008	2009	2010
Population											
Population (000)	3,220	3,231	3,242	3,251	3,258	3,265	3,271	3,279	3,286	3,294	3,301
Growth Rate (%)	0.4	0.3	0.3	0.2	0.2	0.2	0.2	0.2	0.2	0.2	0.2
National Accounts											
GDP, current prices (m. LCU)	276,152	278,353	289,233	339,792	392,850	425,018	476,707	560,412	653,136	706,883	807,685
GDP constant (m. LCU)	414,169	399,836	371,643	380,292	397,936	425,018	443,402	475,922	516,834	530,176	575,069
Real GDP Growth Rate (%)	-1.8	-3.5	-7.1	2.3	4.6	6.8	4.3	7.3	8.6	2.6	8.5
GDP per capita (constant LCU)	125,473	120,856	112,329	115,116	120,523	128,570	133,778	143,182	155,017	158,501	171,326
Gross Capital Formation (m. LCU)	39,923	39,882	37,811	51,670	68,625	75,223	92,247	108,869	148,331	127,509	.
Employment and Wages											
Unemployment Rate (%)	13.6	15.2	17.0	16.8	13.1	12.2	10.6	9.2	7.6	7.3	.
Real Average Wage (2000=100)	100	99.7	89.0	77.9	77.9	81.5	85.0	89.0	92.2	98.9	.
Prices											
GDP Deflator (2005=100)	60	63.0	74.8	88.6	95.2	100.0	107.5	117.8	126.4	133.3	140.5
Annual Change (%)	4.0	5.3	18.7	18.4	7.5	5.1	7.5	9.5	7.3	5.5	5.3
Consumer Price Index (2005=100)	62	64.3	73.3	87.5	95.5	100.0	106.4	115.0	124.1	132.9	141.8
Annual Change (%)	4.8	4.4	14.0	19.4	9.2	4.7	6.4	8.1	7.9	7.1	6.7
Interest Rate: Deposit Rate, (annual %)	18.3	21.6	62.6	29.7	6.2	2.8	1.8	2.4	3.2	4.4	4.2
Interest Rate: Lending Rate, (annual %)	46.1	48.6	118.4	58.9	23.7	13.6	9.3	8.9	12.4	15.3	10.3
Balance of Payments (millions of US\$)											
Current Account Balance	-566	-498	382	-87	3	42	-392	-220	-1,480	207	-160
Exports, f.o.b.	2,384	2,140	1,922	2,281	3,145	3,774	4,400	5,100	7,095	6,408	8,061
Imports, f.o.b.	-3,311	-2,915	-1,874	-2,098	-2,992	-3,753	-4,898	-5,645	-8,810	-6,660	-8,317
Trade Balance	-927	-775	48	183	153	21	-499	-545	-1,714	-252	-256
Services, net	394	316	153	135	325	372	409	703	822	990	1,067
Income, net	-61	-68	109	-488	-588	-494	-428	-516	-736	-671	-1,093
Current Transfers, net	27	30	72	83	113	144	126	137	148	140	122
Capital Account Balance	0	0	0	4	5	4	7	4	0	0	0
Financial Account Balance	543	213	2,048	-954	-388	128	537	496	569	-585	302
Direct Investment, net	268	291	180	401	315	811	1,495	1,240	1,820	1,260	1,633
Portfolio Investment, net	191	508	329	-311	-422	806	1,686	1,151	-558	-706	-537
Other Investment, net	306	-308	-789	336	174	-869	-2,659	-889	1,539	448	-1,155
Reserve Assets	-222	-278	2,328	-1,380	-454	-620	15	-1,005	-2,232	-1,588	361
Foreign exchange	-392	-629	2,290	-1,328	-452	-616	11	-1,008	-2,228	-1,207	478
Errors and Omissions	23	285	-2,430	1,037	379	-174	-152	-279	911	378	-142
Debt											
External Public Debt Outstanding (US\$m)	5,551	6,062	6,707	7,479	7,828	7,734	9,083	10,328	9,980	10,955	.
Debt Service/Exports (%)	27.2	35.1	40.1	26.4	29.1	34.3	86.7	15.7	14.7	21.0	.
Government Finance (millions of local currency)											
Revenue	49,379	51,326	55,365	67,685	81,989	88,734	101,982	115,289	130,751	144,875	.
Current revenue	49,379	51,326	55,365	67,685	81,989	88,734	101,982	115,289	130,751	144,875	.
Expense	57,974	62,426	68,029	82,189	91,370	95,406	106,600	124,274	137,779	155,357	.
Current expenditure	53,448	57,968	64,328	78,066	85,718	89,885	99,975	115,759	126,208	144,145	.
Capital expenditure	4,526	4,457	3,701	4,123	5,652	5,521	6,626	8,515	11,572	11,212	.
Overall primary balance	-3,581	-4,961	-2,072	3,299	9,264	11,275	15,263	11,750	11,282	8,959	.
Overall fiscal balance	-8,595	-11,100	-12,664	-14,504	-9,382	-6,672	-4,618	-8,986	-7,029	-10,482	.

7.29 | Venezuela selected economic data

	2000	2001	2002	2003	2004	2005	2006	2007	2008	2009	2010
Population											
Population (000)	23,493	23,844	24,192	24,545	24,905	25,269	25,641	26,024	26,415	26,815	27,223
Growth Rate (%)	1.5	1.5	1.5	1.5	1.5	1.5	1.5	1.5	1.5	1.5	1.5
National Accounts											
GDP, current prices (m. LCU)	79,656	88,946	107,840	134,228	212,683	304,087	393,926	486,376	667,997	700,208	1,002,839
GDP constant (m. LCU)	41,013	42,405	38,650	35,653	42,172	46,524	51,117	55,284	57,927	56,023	54,955
Real GDP Growth Rate (%)	3.7	3.4	-8.9	-7.8	18.3	10.3	9.9	8.2	4.8	-3.3	-1.9
GDP per capita (constant LCU)	1,696	1,737	1,552	1,404	1,628	1,760	1,896	2,010	2,065	1,958	1,883
Gross Capital Formation (m. LCU)	19,253	24,482	22,818	20,426	46,362	69,952	100,187	136,934	165,359	173,476	.
Employment and Wages											
Unemployment Rate (%)	13.2	12.8	16.2	16.8	15.0	11.4	9.3	7.5	6.9	7.6	.
Real Average Wage (2000=100)	100	106.9	95.1	78.4	78.6	80.7	84.8	85.8	81.9	76.5	.
Prices											
GDP Deflator (2005=100)	30	32.1	42.7	57.6	77.2	100.0	117.4	133.7	176.5	191.3	279.9
Annual Change (%)	29.5	8.0	33.0	34.9	34.0	29.6	17.4	13.9	32.0	8.4	46.3
Consumer Price Index (2005=100)	39	44.1	54.0	70.8	86.2	100.0	113.7	134.9	177.3	228.0	294.3
Annual Change (%)	16.2	12.5	22.4	31.1	21.7	16.0	13.7	18.7	31.4	28.6	29.1
Interest Rate: Deposit Rate, (annual %)	16.3	15.5	29.0	17.2	12.6	11.6	10.3	10.7	16.2	16.4	14.8
Interest Rate: Lending Rate, (annual %)	25.2	22.5	36.6	25.2	18.5	16.8	15.5	17.1	22.4	19.9	18.3
Balance of Payments (millions of US\$)											
Current Account Balance	11,853	1,983	7,599	11,796	15,519	25,110	26,462	18,063	37,392	8,561	14,378
Exports, f.o.b.	33,529	26,667	26,781	27,230	39,668	55,647	65,578	69,010	95,138	57,595	65,786
Imports, f.o.b.	-16,865	-19,211	-13,360	-10,483	-17,021	-24,195	-33,583	-46,031	-49,482	-38,442	-38,613
Trade Balance	16,664	7,456	13,421	16,747	22,647	31,452	31,995	22,979	45,656	19,153	27,173
Services, net	-3,253	-3,305	-2,909	-2,634	-3,383	-4,008	-4,410	-6,952	-8,354	-7,617	-8,857
Income, net	-1,388	-2,020	-2,756	-2,337	-3,673	-2,265	-1,045	2,467	698	-2,652	-3,379
Current Transfers, net	-170	-148	-157	20	-72	-69	-78	-431	-608	-323	-559
Capital Account Balance	0	0	0	0	0	0	0	0	0	0	-211
Financial Account Balance	-8,927	1,620	-4,816	-11,001	-13,016	-21,904	-24,252	-16,317	-34,094	-3,778	-10,528
Direct Investment, net	4,180	3,479	-244	722	864	1,435	-2,032	978	-923	-4,939	-3,794
Portfolio Investment, net	-3,134	1,107	-2,310	-966	-2,084	928	-9,949	2,568	3,046	8,931	3,189
Other Investment, net	-4,524	-4,994	-6,692	-5,303	-9,641	-18,843	-7,366	-25,215	-26,761	-18,569	-17,862
Reserve Assets	-5,449	2,028	4,430	-5,454	-2,155	-5,424	-4,904	5,357	-9,456	10,799	7,939
Foreign exchange	-5,375	2,232	4,330	-5,176	-2,149	-5,426	-4,900	5,377	-9,409	14,514	8,367
Errors and Omissions	-2,926	-3,603	-2,783	-795	-2,503	-3,206	-2,210	-1,746	-3,298	-4,783	-3,639
Debt											
External Public Debt Outstanding (US\$m)	27,817	25,309	23,442	24,551	26,546	31,078	27,165	27,537	29,875	35,184	.
Debt Service/Exports (%)	16.8	25.4	25.6	29.6	17.2	9.4	13.1	7.1	5.7	6.4	.
Government Finance (millions of local currency)											
Revenue	16,076	18,487	23,889	31,385	51,076	83,732	117,326	141,333	166,098	151,525	.
Current revenue	16,073	18,487	23,889	31,385	51,076	83,732	117,326	141,333	166,098	151,525	.
Capital revenue	3	0	0	0	0	0	0	0	0	0	.
Expense	17,399	22,357	28,163	37,287	55,110	78,793	117,255	126,462	174,133	187,135	.
Current expenditure	14,393	18,064	21,920	29,607	43,334	59,683	89,015	97,313	133,848	145,974	.
Capital expenditure	2,632	3,909	5,449	7,365	10,733	17,595	26,347	28,624	38,844	38,187	.
Lending minus repayments	374	384	794	315	1,043	1,516	1,894	525	1,441	2,973	.
Overall primary balance	702	-1,292	677	398	3,742	13,880	8,228	22,274	736	-26,202	.
Overall fiscal balance	-1,323	-3,870	-4,273	-5,902	-4,034	4,939	71	14,871	-8,034	-35,609	.
Total Financing	1,323	3,870	4,273	5,902	4,034	-4,939	-71	-14,871	8,034	35,609	.
Domestic	3,170	3,569	3,327	4,459	-1,549	-7,564	-5,260	-6,827	-1,776	25,812	.
Foreign	-1,846	301	947	1,443	5,583	2,626	5,189	-8,044	9,811	9,797	.

Sources and Technical Notes – Economy

Figures

Per capita GDP Growth

Source World Bank, *World Development Indicators* (online version) as of April 2011.

Notes Figure depicts annual percentage growth rates of GDP expressed in constant local currency units.

Average Annual Inflation

Source International Monetary Fund, *International Financial Statistics* (CD-ROM version) as of June 2011.

Definitions The GDP deflator is the ratio of GDP in current local currency to GDP in constant local currency. The base year can vary by country.

Notes Figure depicts annualized inflation rate from 2002-2008 calculated from the GDP deflator series. Annualized inflation rate calculated using the geometric mean, which is based on end-points: $[(2008/2002)^{(1/6)} - 1] \times 100 =$ average annual growth for 2002-2008

Government Share of GDP

Source World Bank, *World Development Indicators* (online version) as of April 2011.

Definitions *Government share of GDP* represents general government final consumption expenditure (formerly general government consumption), which includes all government current expenditures for purchases of goods and services (including compensation of employees). It also includes most expenditures on national defense and security, but excludes government military expenditures that are part of government capital formation.

Notes Countries not having data for all years from 1989-2009 were excluded. Groups are defined as follows: The Caribbean is the unweighted average of Antigua and Barbuda, Dominica, Dominican Republic, Grenada, Guyana, St. Kitts and Nevis, St. Lucia, St. Vincent and Grenadines. Central America is comprised of the unweighted average of Costa Rica, El Salvador, Guatemala, Honduras, Nicaragua and Panama. South America ex. Brazil is constituted by the unweighted average of Argentina, Bolivia, Chile, Colombia, Ecuador, Paraguay, Peru, Uruguay, and Venezuela.

Selected Definitions and Notes

Atlas Method For purposes of cross-country comparison of national incomes, the World Bank's Atlas conversion factor is used to reduce the impact of exchange rate fluctuations. This involves using a three-year average of exchange rates to smooth the effects of transitory exchange rate fluctuations. The Atlas conversion factor is the average of a country's exchange rate (or alternative conversion factor) for that year and its exchange rates for the two preceding years, adjusted for the difference between the rate of inflation in the country and that in the G-5 countries (France, Germany, Japan, the United Kingdom, and the United States). For 2001 onwards, these countries include the Euro Zone, Japan, the United Kingdom, and the United States. A country's inflation rate is measured by the change in its GDP deflator. The inflation rate for

G-5 countries (through 2000, and the Euro Zone, Japan, and the United Kingdom, and the United States for 2001 onwards), representing international inflation, is measured by the change in the SDR deflator (Special drawing rights, or SDRs, are the IMF's unit of account). The SDR deflator is calculated as a weighted average of the G-5 countries' (through 2000, and the Euro Zone, Japan, and the United Kingdom, and the United States for 2001 onwards) GDP deflators in SDR terms, the weights being the amount of each country's currency in one SDR unit. Weights vary over time because both the composition of the SDR and the relative exchange rates for each currency change. The SDR deflator is calculated in SDR terms first and then converted to U.S. dollars, using the SDR to dollar Atlas conversion factor. The Atlas conversion factor is then applied.

Balance of Payments The balance of payments is a set of accounts recording all flows of value between a nation's residents and the residents of the rest of the world during a period of time. More specifically, it is a double-entry accounting system that lists all flows of goods and services into and out of a country; all transfers that are the counterpart of real resources or financial claims provided to or by the rest of the world, such as donations and grants; and all changes in residents' claims on, and liabilities to, nonresidents that arise from economic transactions. The balance of payments is divided into three groups of accounts. The current account (balance) refers to the sum of net exports of goods and services, income, and current transfers. The capital account (balance) consists of some unilateral transfers including those of ownership of fixed assets, acquisition of intangibles such as patents and leases, and also debt forgiveness. The financial account (balance) refers to the sum of financial assets and liabilities including foreign direct investment, portfolio investment, financial derivatives, and reserve assets as deemed by respective monetary authorities. All transactions are recorded twice—once as a credit and once as a debit. In principle the net balance should be zero, but in practice the accounts often do not balance. In these cases a balancing item, usually net errors and omissions, is itemized separately.

Consumer Price Index (CPI) The CPI is a price index based on surveys of the cost of a typical "market basket" of goods and services purchased. Generally, the CPI is geared toward the middle- to lower-middle-income consumer. The CPI focuses on a narrower category of goods than does the GDP deflator. While the GDP deflator is the price index of all the goods and services produced in an economy, both consumption goods and investment goods, the CPI represents the prices of only consumption goods. One problem with any fixed-bundle index as a measure of cost of living is that it does not account for substitutions that consumers might make in response to price changes. As a result, the CPI somewhat overstates changes in the cost of living. The cost of a typical market basket of goods and services is determined by household income-and-expenditure surveys conducted approximately every 10-20 years. In some countries, however, the latest income-and-expenditure survey is more than 20 years old, thus making the market basket out-of-date and

distorting consumer-price trends to an undetermined degree. Consumer price indices are based on yearly-average prices.

External Public Debt refers to debt owed to nonresidents repayable in foreign currency, goods, or services. Total external public debt is the sum of public and publicly guaranteed medium- and long-term debt. Public debtors include the central government, the rest of general government, and autonomous state agencies and enterprises. The debt outstanding/GDP ratio is a frequently used measure of a country's debt burden, although it does not take into account the degree of concessionality of the debt. The ratio of debt service to exports of goods and nonfactor services (the debt-service ratio), another indicator of debt burden, does take concessionality into account by relating debt-service payments to a country's capacity to generate its own foreign exchange for making these payments. Debt figures reported by the World Bank, IMF, IADB, and countries' own official data sources often disagree on the size of the public debt and the debt-burden percentages.

GDP Deflator The GDP (gross domestic product) deflator is an overall measure of prices in an economy—a price index for GDP. It is equal to the ratio of nominal GDP to real GDP multiplied by 100. Specifically, the value of all newly produced final goods is calculated in current prices, resulting in nominal GDP. Then the same set of goods is valued at the prices that prevailed in the base year, resulting in real GDP. The ratio of nominal GDP to real GDP is the GDP deflator. The GDP deflator is the broadest based price index available—it is considered by many to be the best overall indicator of inflationary pressures in an economy.

Government Finance Reporting of Government Finance supports analysis of fiscal policy of the general government sector in a given accounting period. Transactions of government operations are therefore recorded and classified to demonstrate the effect of fiscal policy on the net worth of the general government sector, its demand for credit, and on its holdings of assets and liabilities.

Gross Capital Formation Formerly referred to as Gross Domestic Investment (GDI), this measure consists primarily of outlays on additions to the fixed assets (capital) of an economy, as well as net changes in the level of inventories. Fixed assets cover land improvements, plant, machinery, and equipment purchases, and infrastructure development and maintenance. Inventories are stocks of goods held by firms to meet temporary or unexpected fluctuations in production or sales. By adding to capital stock, investment increases an economy's capacity to grow over time. Investment is financed by savings, either national or foreign.

Gross National Income (GNI) Formerly referred to as Gross National Product (GNP), this measure reflects the total value of final goods and services produced by domestically owned factors of production. Whereas GDP measures the total value of production within the geographic boundaries of an economy—that is, by a country's *residents*—GNI measures the total value that is produced by a country's *nationals*, whether they are located inside or outside the boundaries of the particular country. Therefore, GNI will be equal to

GDP plus income from abroad, minus foreign-owned production. GNI is thus used to reflect a country's total sources and uses of income, and thus the total amount of resources available to the citizens of a country.

Gross Domestic Product (GDP) GDP is a measure of an economy's total production of final goods and services for domestic consumption and investment, and for export. The value of intermediate (non-final) goods and services is not included as that would represent double-counting. Alternatively, GDP can be thought of as the sum of value added in production at each successive stage of the production-marketing chain. GDP can be used to reflect the state of production, and hence *development*, in a country.

Interest Rate Refers to payments to and by financing institutions and are arithmetic averages of monthly interest rates reported by the countries. *Deposit rate* usually refers to rates offered to resident customers for demand, time, or savings deposits. Frequently, rates for time and savings deposits are classified according to maturity and amounts deposited. In addition, deposit money banks and similar deposit-taking institutions may offer short- and medium-term instruments at specified rates for specific amounts and maturities. *Lending rate* is the bank rate that usually meets the short- and medium-term financing needs of the private sector. This rate is normally differentiated according to creditworthiness of borrowers and objectives of financing.

PPP Indicates the use of Purchasing Power Parity (PPP) rationale to convert total annual output to international dollars. An international dollar adjusted for PPP has the same purchasing power over GDP as a U.S. dollar in the United States and buys an equivalent amount of goods or services irrespective of the country. PPP rates provide a standard measure allowing comparisons of real price levels between countries, just as conventional price indexes allow comparison of real values over time. Values are in current dollars and are not adjusted for inflation. The PPP rates for each country are estimated through extrapolation and regression analysis using data from the International Comparison Programme (ICP). Computation of the PPP involves deriving implicit quantities from national accounts expenditure data and specially collected price data and then revaluing the implicit quantities in each country at a single set of average prices. PPP estimates tend to lower per capita GDPs in industrialized countries and raise per capita GDPs in developing countries (for more information on ICP, visit <http://www.worldbank.org/data/>).

Population Figures are mid-year estimates derived from national census data. Projections are based on information regarding mortality rates, fertility trends, and net external migration.

Public Debt Outstanding Public and publicly guaranteed debt comprising long-term external obligations of public debtors, including the national government, political subdivisions (or an agency of either), and autonomous public bodies, and external obligations of private debtors that are guaranteed for repayment by a public entity. Data are in current U.S. dollars.

Table 7.1

Gross National Income

Source World Bank, *World Development Indicators* (online version) as of August 2011.

Definitions *Gross national income* (formerly GNP) is the sum of value added by all resident producers plus any product taxes (less subsidies) not included in the valuation of output plus net receipts of primary income (compensation of employees and property income) from abroad. See the entry for GNI in *Selected Definitions and Notes* above for further information.

Note Figure displays 2009 GNI per capita value for selected countries using the World Bank's Atlas method, which is described in this chapter's *Selected Definitions and Notes*.

Table 7.2

Gross Domestic Product

Source IMF, *World Economic Outlook*, April 2011.

Definitions *Gross domestic product* refers to the definition listed under *Selected Definitions and Notes* above. *Current GDP* and *per capita GDP* refers to valuation of GDP and per capita GDP using current US dollars. *Nominal annual growth (%)* is the growth rate from the previous year to the current year based on current US dollars. *Real annual growth (%)* is the growth rate from the previous year to the current year based on constant local currency. *Current PPP GDP* and *per capita GDP* is a country's GDP or per capita GDP converted to US dollars using the PPP principle (see definition for PPP above). *Annual PPP growth (%)* is the growth rate from the previous year to the current year based on PPP valuations of GDP and per capita GDP.

Table 7.3

Debt

Source World Bank, *World Development Indicators* (online version) as of April 2011.

Definitions *Total external debt* is the sum of public, publicly guaranteed, and private non-guaranteed long-term debt, use of IMF credit, and short-term debt. Short-term debt includes all debt having an original maturity of one year or less and interest in arrears on long-term debt. *Use of IMF credit* denotes repurchase obligations to the IMF for all uses of IMF resources (excluding those resulting from drawings on the reserve tranche). These obligations, shown for the end of the year specified, comprise purchases outstanding under the credit tranches, including enlarged access resources, and all special facilities (the buffer stock, compensatory financing, extended fund, and oil facilities), trust fund loans, and operations under the structural adjustment and enhanced structural adjustment facilities. *Long-term debt* is debt that has an original or extended maturity of more than one year. It has three components: public, publicly guaranteed, and private non-guaranteed debt. *Total debt service* is the sum of principal repayments and interest actually paid in foreign currency, goods, or services on long-term debt, interest paid on short-term debt, and repayments (repurchases and charges) to the IMF.

Note Figure depicts the calculated unweighted average total debt service (% of GNI) for the 26 LAC countries presented in the table.

Table 7.4

Unemployment Rates

Source ECLAC, CEPALSTAT (online) as of June 2011.

Definition *Unemployment* is the share of the labor force that is without work but available for and seeking employment. Definitions of labor force and unemployment may vary by country.

Table 7.5

Real Average Wages

Source ECLAC, CEPALSTAT (online) as of June 2011.

Definition *Real average wages* reflect nominal formal sector wages deflated by the consumer price index. Each country's 2000 average has been indexed to 100. Figures greater than 100 for any given year indicate higher average wages than in 2000.

Note Figure depicts the total growth in the real average wage as the percentage change from 1990 to 2000 and from 2000 to 2009.

Country Tables (7.6 – 7.29)

Sources Country tables were compiled from the following sources. **Population:** US Bureau of the Census, International Database, (online) as of July 2011, Washington, DC. **National Accounts:** IMF, *World Economic Outlook*, April 2011; and World Bank, *World Development Indicators* (online version) as of August 2011. **Employment and Wages:** World Bank, *World Development Indicators* (online version) as of August 2011; and ECLAC, CEPALSTAT (online) as of June 2011. **Prices:** *International Financial Statistics*, August 2011 (CD-ROM version), International Monetary Fund (IMF) Washington, DC. **Balance of Payments:** *Balance of Payments Statistics*, August 2011 (CD-ROM version), International Monetary Fund (IMF) Washington, DC. **External Debt:** World Bank, *World Development Indicators* (online version) as of August 2011. **Government Finance:** Except where noted, ECLAC, CEPALSTAT (online) as of August 2011. Data capture the central government's fiscal operations.

Belize (Table 7.7) Government Finance statistics are drawn online from Central Bank of Belize's Table 26 of the Statistical Digest, <http://www.centralbank.org.bz> as of July 2011.

Guyana (Table 7.17) Government Finance statistics are drawn from Table 6-I of the Central Bank of Guyana's 2010 Annual Report, <http://www.bankofguyana.org.gy/> as of July 2011.

Jamaica (Table 7.20) Government statistics are drawn from *Government Finance Statistics*, June 2011 (CD-ROM version), International Monetary Fund (IMF), Washington, DC.

Trinidad and Tobago (Table 7.27) Government statistics are drawn from *Government Finance Statistics*, June 2011 (CD-ROM version), IMF, Washington, DC.