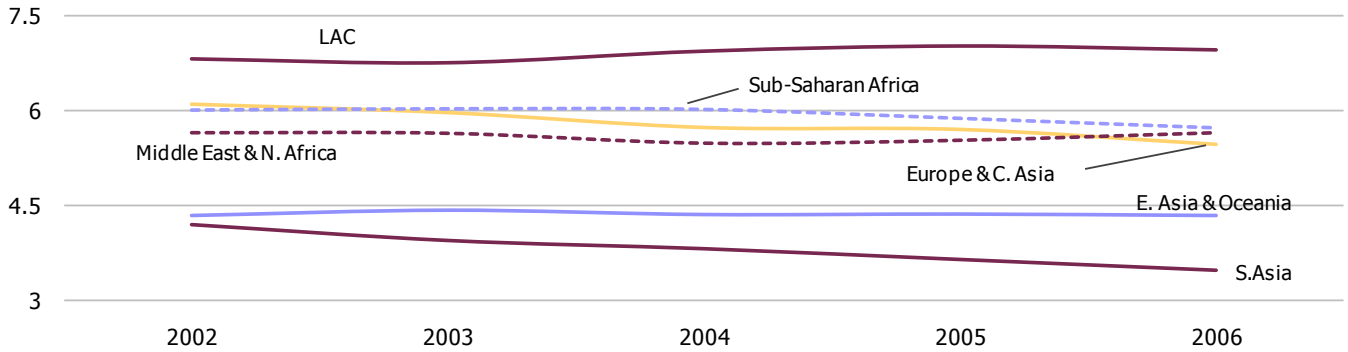


**Total Regional Health Expenditures**

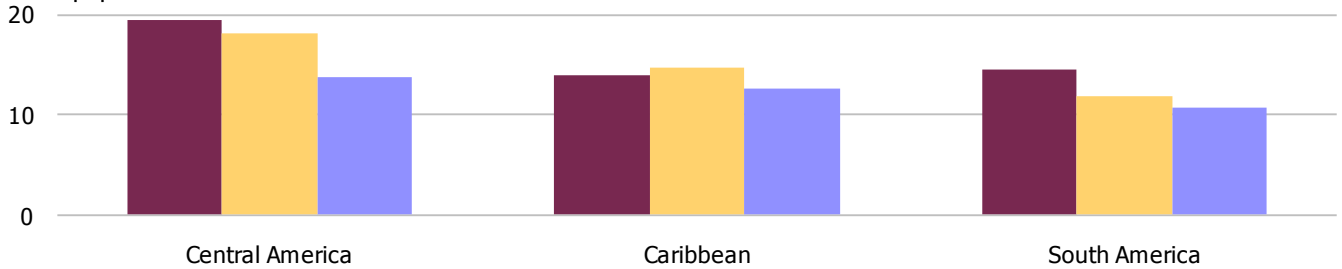
Percent of GDP



**Prevalence of Undernourishment**

Percent of population

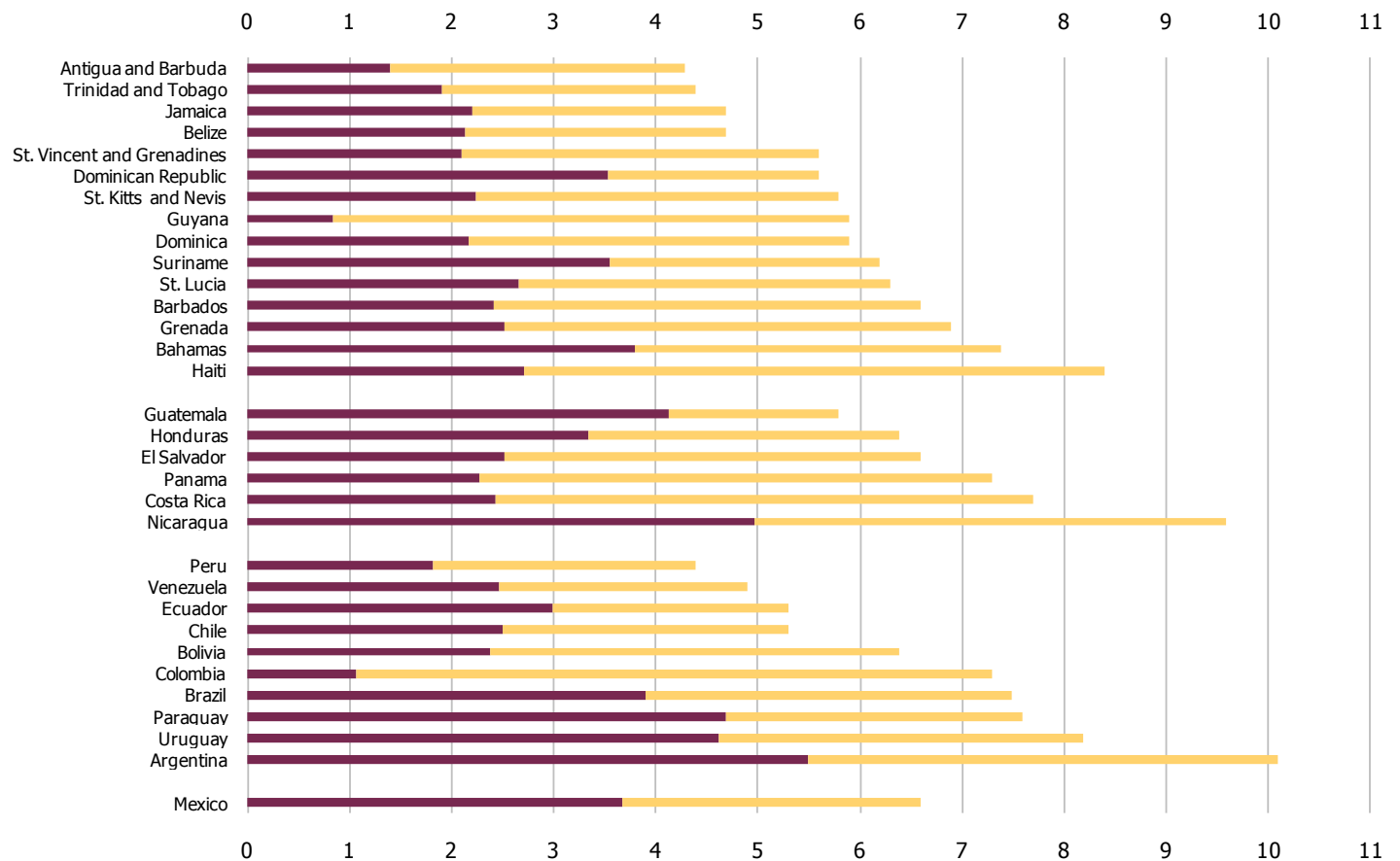
■ 1992 ■ 1997 ■ 2005



**LAC Health Expenditures in 2006**

Percent of GDP

■ Private Expenditures ■ Public Expenditures



### 3.1 | Infant Mortality Rate per 1,000 live births

|                            | Both sexes  |             |             |             |             | Female      |             |             |             |             | Male        |             |             |             |             |
|----------------------------|-------------|-------------|-------------|-------------|-------------|-------------|-------------|-------------|-------------|-------------|-------------|-------------|-------------|-------------|-------------|
|                            | 2005        | 2006        | 2007        | 2008        | 2009        | 2005        | 2006        | 2007        | 2008        | 2009        | 2005        | 2006        | 2007        | 2008        | 2009        |
| Anguilla                   | 3.6         | 3.6         | 3.6         | 3.5         | 3.5         | 3.1         | 3.1         | 3.1         | 3.1         | 3.0         | 4.1         | 4.1         | 4.0         | 4.0         | 4.0         |
| Antigua and Barbuda        | 21.8        | 20.2        | 18.8        | 17.5        | 16.2        | 18.1        | 16.9        | 15.7        | 14.6        | 13.6        | 25.3        | 23.5        | 21.8        | 20.2        | 18.8        |
| Aruba                      | 15.8        | 15.3        | 14.8        | 14.3        | 13.8        | 10.4        | 10.1        | 9.8         | 9.5         | 9.2         | 21.0        | 20.3        | 19.6        | 18.9        | 18.3        |
| Bahamas                    | 25.2        | 24.7        | 24.2        | 23.7        | 23.2        | 19.3        | 19.0        | 18.6        | 18.3        | 18.0        | 31.0        | 30.3        | 29.6        | 28.9        | 28.2        |
| Barbados                   | 14.1        | 13.7        | 13.2        | 12.7        | 12.3        | 12.5        | 12.1        | 11.6        | 11.1        | 10.7        | 15.6        | 15.2        | 14.8        | 14.3        | 13.9        |
| Belize                     | 25.5        | 24.9        | 24.2        | 23.6        | 23.1        | 22.2        | 21.8        | 21.2        | 20.8        | 20.0        | 28.7        | 27.8        | 27.2        | 26.4        | 26.0        |
| Bermuda                    | 2.4         | 2.5         | 2.5         | 2.5         | 2.5         | 2.3         | 2.3         | 2.4         | 2.4         | 2.4         | 2.5         | 2.5         | 2.6         | 2.6         | 2.6         |
| British Virgin Islands     | 17.0        | 16.4        | 15.8        | 15.2        | 14.7        | 14.6        | 14.1        | 13.6        | 13.1        | 12.6        | 19.2        | 18.5        | 17.9        | 17.2        | 16.6        |
| Cayman Islands             | 7.6         | 7.5         | 7.3         | 7.1         | 6.9         | 6.5         | 6.3         | 6.2         | 6.0         | 5.9         | 8.8         | 8.6         | 8.4         | 8.2         | 8.0         |
| Dominica                   | 15.6        | 15.1        | 14.6        | 14.1        | 13.7        | 9.9         | 9.6         | 9.3         | 9.0         | 8.7         | 21.1        | 20.4        | 19.7        | 19.0        | 18.3        |
| Dominican Republic         | 30.1        | 29.0        | 27.9        | 26.9        | 26.0        | 27.9        | 26.8        | 25.8        | 24.8        | 23.8        | 32.3        | 31.1        | 30.1        | 29.0        | 28.0        |
| Grenada                    | 14.7        | 14.3        | 13.9        | 13.6        | 13.2        | 15.1        | 14.7        | 14.3        | 13.9        | 13.5        | 14.2        | 13.9        | 13.6        | 13.2        | 12.9        |
| Guyana                     | 33.3        | 32.2        | 31.4        | 30.4        | 29.6        | 29.4        | 28.4        | 27.6        | 26.8        | 26.1        | 36.9        | 35.8        | 34.9        | 33.9        | 33.0        |
| Haiti                      | 66.7        | 64.9        | 63.1        | 61.4        | 59.7        | 59.3        | 57.7        | 56.1        | 54.5        | 53.0        | 73.8        | 71.8        | 69.9        | 68.0        | 66.2        |
| Jamaica                    | 16.5        | 16.2        | 15.9        | 15.6        | 15.2        | 15.8        | 15.5        | 15.2        | 14.9        | 14.6        | 17.1        | 16.8        | 16.5        | 16.2        | 15.8        |
| Montserrat                 | 20.1        | 17.4        | 16.8        | 16.5        | 16.1        | 25.8        | 22.2        | 21.5        | 20.9        | 20.4        | 14.6        | 12.7        | 12.4        | 12.2        | 12.0        |
| Netherlands Antilles       | 10.2        | 9.9         | 9.6         | 9.4         | 9.1         | 9.4         | 9.2         | 8.9         | 8.6         | 8.4         | 10.9        | 10.6        | 10.3        | 10.0        | 9.8         |
| Puerto Rico                | 9.3         | 8.6         | 8.5         | 8.5         | 8.4         | 8.9         | 7.2         | 7.1         | 7.1         | 7.1         | 9.7         | 9.9         | 9.8         | 9.8         | 9.7         |
| St. Kitts and Nevis        | 15.6        | 15.2        | 14.7        | 14.3        | 13.9        | 13.6        | 13.2        | 12.8        | 12.5        | 12.1        | 17.4        | 17.0        | 16.5        | 16.1        | 15.7        |
| St. Lucia                  | 15.0        | 14.6        | 14.2        | 13.8        | 13.4        | 16.4        | 15.8        | 15.4        | 14.9        | 14.4        | 13.7        | 13.3        | 13.1        | 12.8        | 12.5        |
| St. Vincent and Grenadines | 17.1        | 16.6        | 16.1        | 15.6        | 15.1        | 15.5        | 15.1        | 14.6        | 14.2        | 13.8        | 18.6        | 18.0        | 17.5        | 17.0        | 16.5        |
| Suriname                   | 21.5        | 20.8        | 20.1        | 19.4        | 18.8        | 17.4        | 16.8        | 16.2        | 15.7        | 15.2        | 25.4        | 24.5        | 23.7        | 23.0        | 22.2        |
| Trinidad and Tobago        | 34.8        | 33.5        | 32.2        | 31.1        | 29.9        | 33.7        | 32.3        | 31.1        | 29.8        | 28.7        | 35.8        | 34.7        | 33.4        | 32.2        | 31.1        |
| Turks and Caicos Islands   | 15.8        | 15.3        | 14.8        | 14.3        | 13.9        | 13.3        | 12.9        | 12.4        | 12.0        | 11.6        | 18.3        | 17.7        | 17.1        | 16.6        | 16.0        |
| Virgin Islands (U.S.)      | 8.2         | 8.0         | 7.9         | 7.7         | 7.6         | 7.5         | 7.3         | 7.1         | 7.0         | 6.8         | 8.9         | 8.7         | 8.6         | 8.4         | 8.3         |
| <b>Caribbean</b>           | <b>19.1</b> | <b>18.4</b> | <b>17.8</b> | <b>17.3</b> | <b>16.8</b> | <b>17.1</b> | <b>16.4</b> | <b>15.9</b> | <b>15.4</b> | <b>14.9</b> | <b>21.0</b> | <b>20.3</b> | <b>19.7</b> | <b>19.1</b> | <b>18.6</b> |
| Costa Rica                 | 9.8         | 9.5         | 9.2         | 9.0         | 8.8         | 8.7         | 8.5         | 8.3         | 8.1         | 7.8         | 10.7        | 10.4        | 10.2        | 9.9         | 9.7         |
| El Salvador                | 24.3        | 23.6        | 22.9        | 22.2        | 21.5        | 21.3        | 20.6        | 19.9        | 19.2        | 18.5        | 27.2        | 26.5        | 25.8        | 25.1        | 24.4        |
| Guatemala                  | 31.8        | 30.8        | 29.8        | 28.8        | 27.8        | 29.1        | 28.1        | 27.2        | 26.2        | 25.4        | 34.5        | 33.3        | 32.3        | 31.2        | 30.2        |
| Honduras                   | 26.5        | 25.8        | 25.2        | 24.6        | 24.0        | 23.0        | 22.5        | 21.9        | 21.4        | 20.9        | 29.7        | 29.0        | 28.3        | 27.6        | 27.0        |
| Nicaragua                  | 28.8        | 27.8        | 26.8        | 25.9        | 25.0        | 25.2        | 24.3        | 23.4        | 22.6        | 21.8        | 32.2        | 31.1        | 30.1        | 29.1        | 28.1        |
| Panama                     | 15.7        | 15.0        | 14.2        | 13.4        | 12.7        | 14.4        | 13.8        | 13.1        | 12.4        | 11.8        | 16.9        | 16.1        | 15.2        | 14.3        | 13.5        |
| <b>Central America</b>     | <b>22.8</b> | <b>22.1</b> | <b>21.4</b> | <b>20.7</b> | <b>20.0</b> | <b>20.3</b> | <b>19.6</b> | <b>19.0</b> | <b>18.3</b> | <b>17.7</b> | <b>25.2</b> | <b>24.4</b> | <b>23.7</b> | <b>22.9</b> | <b>22.2</b> |
| Argentina                  | 12.9        | 12.5        | 12.1        | 11.8        | 11.4        | 11.4        | 11.0        | 10.7        | 10.4        | 10.1        | 14.3        | 13.9        | 13.5        | 13.1        | 12.8        |
| Bolivia                    | 50.0        | 48.6        | 47.3        | 46.0        | 44.7        | 45.7        | 44.4        | 43.1        | 41.8        | 40.6        | 54.1        | 52.7        | 51.3        | 49.9        | 48.6        |
| Brazil                     | 25.7        | 24.9        | 24.1        | 23.3        | 22.6        | 21.8        | 21.0        | 20.2        | 19.5        | 18.8        | 29.4        | 28.6        | 27.8        | 26.9        | 26.2        |
| Chile                      | 8.5         | 8.3         | 8.1         | 7.9         | 7.7         | 7.6         | 7.4         | 7.2         | 7.1         | 6.9         | 9.4         | 9.1         | 8.9         | 8.7         | 8.5         |
| Colombia                   | 21.4        | 20.8        | 20.1        | 19.5        | 18.9        | 17.5        | 16.9        | 16.3        | 15.7        | 15.1        | 25.3        | 24.6        | 23.9        | 23.2        | 22.5        |
| Ecuador                    | 23.7        | 22.9        | 22.2        | 21.6        | 20.9        | 19.8        | 19.1        | 18.5        | 17.8        | 17.2        | 27.4        | 26.6        | 25.9        | 25.1        | 24.4        |
| Paraguay                   | 28.4        | 27.4        | 26.4        | 25.6        | 24.7        | 23.7        | 22.8        | 22.0        | 21.2        | 20.4        | 32.8        | 31.8        | 30.7        | 29.7        | 28.8        |
| Peru                       | 32.4        | 31.4        | 30.5        | 29.5        | 28.6        | 29.7        | 28.8        | 27.8        | 26.9        | 26.1        | 35.0        | 34.0        | 33.0        | 32.0        | 31.1        |
| Uruguay                    | 12.8        | 12.4        | 12.0        | 11.7        | 11.3        | 11.2        | 10.8        | 10.5        | 10.2        | 9.9         | 14.3        | 13.9        | 13.5        | 13.1        | 12.7        |
| Venezuela                  | 23.5        | 23.0        | 22.5        | 22.0        | 21.5        | 19.7        | 19.2        | 18.7        | 18.3        | 17.8        | 27.2        | 26.7        | 26.1        | 25.6        | 25.1        |
| <b>South America</b>       | <b>23.9</b> | <b>23.2</b> | <b>22.5</b> | <b>21.9</b> | <b>21.2</b> | <b>20.8</b> | <b>20.1</b> | <b>19.5</b> | <b>18.9</b> | <b>18.3</b> | <b>26.9</b> | <b>26.2</b> | <b>25.5</b> | <b>24.7</b> | <b>24.1</b> |
| Mexico                     | 20.9        | 20.3        | 19.6        | 19.0        | 18.4        | 18.9        | 18.2        | 17.6        | 17.0        | 16.4        | 22.9        | 22.2        | 21.5        | 20.9        | 20.3        |
| <b>LAC</b>                 | <b>20.8</b> | <b>20.1</b> | <b>19.5</b> | <b>18.9</b> | <b>18.3</b> | <b>18.5</b> | <b>17.8</b> | <b>17.2</b> | <b>16.7</b> | <b>16.2</b> | <b>23.1</b> | <b>22.3</b> | <b>21.7</b> | <b>21.0</b> | <b>20.4</b> |

### 3.2 | Under-5 Mortality

|                            | Under age 5 deaths per<br>1,000 live births (2006) |             |             | Causes of death (%) among children under five years of age in 2000 |                       |             |            |             |                    |             |
|----------------------------|--|-------------|-------------|--|-----------------------|-------------|------------|-------------|--------------------|-------------|
|                            | Both<br>sexes                                      | Female      | Male        | Malaria  | Diarrhoeal<br>Disease | Injuries    | Measles    | Pneumonia   | Neonatal<br>Causes | Other       |
| Antigua and Barbuda        | 11.0   | 10.0        | 13.0        | 0.0  | 2.4                   | 2.4         | 0.0        | 1.5         | 25.3               | 67.4        |
| Bahamas                    | 14.0   | 12.0        | 16.0        | 0.0  | 13.0                  | 0.8         | 0.0        | 5.3         | 43.5               | 32.1        |
| Barbados                   | 12.0   | 12.0        | 12.0        | 0.0  | 1.7                   | 0.0         | 0.0        | 0.0         | 63.8               | 32.8        |
| Belize                     | 16.0   | 14.0        | 18.0        | 0.0  | 9.8                   | 3.5         | 0.0        | 6.9         | 49.0               | 29.9        |
| Cuba                       | 7.0  | 6.0         | 7.0         | 0.0  | 7.9                   | 1.3         | 0.0        | 4.1         | 49.9               | 36.9        |
| Dominica                   | 15.0   | 14.0        | 16.0        | 0.0  | 0.0                   | 0.0         | 0.0        | 0.0         | 99.9               | 0.1         |
| Dominican Republic         | 29.0   | 27.0        | 31.0        | 0.6  | 2.9                   | 11.7        | 0.1        | 13.0        | 47.2               | 20.6        |
| Grenada                    | 20.0   | 16.0        | 24.0        | 0.0  | 5.2                   | 1.6         | 0.0        | 9.5         | 43.8               | 37.3        |
| Guyana                     | 62.0   | 55.0        | 68.0        | 0.7  | 6.2                   | 21.4        | 0.0        | 5.2         | 33.7               | 25.2        |
| Haiti                      | 80.0   | 77.0        | 83.0        | 0.7  | 0.4                   | 16.5        | 0.5        | 20.2        | 26.4               | 27.0        |
| Jamaica                    | 32.0   | 30.0        | 33.0        | 0.0  | 2.4                   | 9.6         | 0.0        | 9.3         | 52.1               | 20.6        |
| St. Kitts and Nevis        | 19.0   | 20.0        | 18.0        | 0.0  | 7.9                   | 14.4        | 0.0        | 0.0         | 2.8                | 74.9        |
| St. Lucia                  | 14.0   | 14.0        | 14.0        | 0.0  | 4.7                   | 1.3         | 0.0        | 1.3         | 30.9               | 60.4        |
| St. Vincent and Grenadines | 20.0   | 16.0        | 24.0        | 0.0  | 4.0                   | 0.5         | 0.0        | 10.5        | 49.6               | 32.4        |
| Suriname                   | 39.0   | 33.0        | 44.0        | 2.4  | 5.8                   | 13.1        | 0.3        | 11.5        | 40.5               | 23.9        |
| Trinidad and Tobago        | 38.0   | 36.0        | 39.0        | 0.0  | 3.1                   | 1.3         | 0.0        | 2.0         | 46.3               | 42.5        |
| <b>Caribbean</b>           | <b>26.8</b>  | <b>24.5</b> | <b>28.8</b> | <b>0.3</b>   | <b>4.8</b>            | <b>6.2</b>  | <b>0.1</b> | <b>6.3</b>  | <b>44.0</b>        | <b>35.3</b> |
| Costa Rica                 | 12.0   | 11.0        | 13.0        | 0.0  | 3.9                   | 3.0         | 0.0        | 4.0         | 58.7               | 30.1        |
| El Salvador                | 25.0   | 23.0        | 28.0        | 0.5  | 3.7                   | 12.4        | 0.0        | 13.4        | 39.9               | 28.4        |
| Guatemala                  | 41.0   | 41.0        | 41.0        | 0.4  | 1.5                   | 13.1        | 0.1        | 15.0        | 37.3               | 29.8        |
| Honduras                   | 27.0   | 26.0        | 28.0        | 0.4  | 4.2                   | 12.2        | 0.0        | 13.8        | 43.1               | 20.1        |
| Nicaragua                  | 36.0   | 33.0        | 39.0        | 0.4  | 3.0                   | 12.2        | 0.0        | 13.7        | 42.4               | 27.7        |
| Panama                     | 23.0   | 20.0        | 26.0        | 0.2  | 3.8                   | 10.7        | 0.0        | 10.8        | 42.4               | 29.6        |
| <b>Central America</b>     | <b>27.3</b>  | <b>25.7</b> | <b>29.2</b> | <b>0.3</b>   | <b>3.4</b>            | <b>10.6</b> | <b>0.0</b> | <b>11.8</b> | <b>44.0</b>        | <b>27.6</b> |
| Argentina                  | 17.0   | 15.0        | 18.0        | 0.0  | 7.7                   | 1.3         | 0.0        | 3.4         | 56.5               | 30.8        |
| Bolivia                    | 61.0   | 60.0        | 62.0        | 0.7  | 5.1                   | 14.3        | 0.1        | 17.1        | 37.9               | 24.7        |
| Brazil                     | 20.0   | 18.0        | 22.0        | 0.5  | 3.2                   | 12.0        | 0.0        | 13.2        | 38.0               | 32.8        |
| Chile                      | 9.0  | 8.0         | 10.0        | 0.0  | 9.1                   | 0.5         | 0.0        | 6.2         | 52.8               | 31.2        |
| Colombia                   | 21.0   | 17.0        | 24.0        | 0.2  | 4.6                   | 10.3        | 0.0        | 10.4        | 62.1               | 11.0        |
| Ecuador                    | 24.0   | 21.0        | 26.0        | 0.5  | 4.6                   | 11.0        | 0.1        | 12.0        | 49.8               | 20.9        |
| Paraguay                   | 22.0   | 20.0        | 24.0        | 0.3  | 3.8                   | 10.7        | 0.1        | 11.9        | 53.5               | 19.6        |
| Peru                       | 25.0   | 24.0        | 27.0        | 0.4  | 9.5                   | 12.2        | 0.0        | 13.6        | 38.5               | 24.9        |
| Uruguay                    | 15.0   | 13.0        | 16.0        | 0.0  | 7.0                   | 2.3         | 0.0        | 5.4         | 48.1               | 36.9        |
| Venezuela                  | 21.0   | 18.0        | 23.0        | 0.0  | 6.5                   | 9.9         | 0.0        | 5.9         | 52.6               | 24.8        |
| <b>South America</b>       | <b>23.5</b>  | <b>21.4</b> | <b>25.2</b> | <b>0.3</b>   | <b>6.1</b>            | <b>8.5</b>  | <b>0.0</b> | <b>9.9</b>  | <b>49.0</b>        | <b>25.8</b> |
| Mexico                     | 35.0   | 32.0        | 38.0        | 0.0  | 7.0                   | 5.1         | 0.0        | 8.5         | 52.5               | 26.8        |
| <b>LAC</b>                 | <b>26.1</b>  | <b>24.0</b> | <b>28.0</b> | <b>0.3</b>   | <b>5.0</b>            | <b>7.7</b>  | <b>0.0</b> | <b>8.4</b>  | <b>45.8</b>        | <b>30.7</b> |

### 3.3 | Life Expectancy at Birth years

|                            | Both sexes  |             |             |             |             | Female      |             |             |             |             | Male        |             |             |             |             |
|----------------------------|-------------|-------------|-------------|-------------|-------------|-------------|-------------|-------------|-------------|-------------|-------------|-------------|-------------|-------------|-------------|
|                            | 2005        | 2006        | 2007        | 2008        | 2009        | 2005        | 2006        | 2007        | 2008        | 2009        | 2005        | 2006        | 2007        | 2008        | 2009        |
| Anguilla                   | 80          | 80          | 80          | 81          | 81          | 83          | 83          | 83          | 83          | 83          | 78          | 78          | 78          | 78          | 78          |
| Antigua and Barbuda        | 73          | 73          | 74          | 74          | 75          | 75          | 75          | 76          | 76          | 77          | 71          | 71          | 72          | 72          | 73          |
| Aruba                      | 74          | 75          | 75          | 75          | 75          | 77          | 78          | 78          | 78          | 78          | 71          | 72          | 72          | 72          | 72          |
| Bahamas                    | 66          | 66          | 66          | 66          | 66          | .           | .           | .           | .           | .           | 62          | 62          | 62          | 63          | 63          |
| Barbados                   | 73          | 73          | 74          | 74          | 74          | 75          | 76          | 76          | 76          | 76          | 71          | 71          | 71          | 71          | 72          |
| Belize                     | 69          | 68          | 68          | 68          | 68          | 71          | 70          | 70          | 70          | 70          | 67          | 66          | 66          | 66          | 66          |
| Bermuda                    | 80          | 80          | 80          | 80          | 80          | 83          | 83          | 83          | 84          | 84          | 77          | 77          | 77          | 77          | 77          |
| British Virgin Islands     | 77          | 77          | 77          | 77          | 77          | .           | .           | .           | .           | .           | 75          | 76          | 76          | 76          | 76          |
| Cayman Islands             | 80          | 80          | 80          | 80          | 80          | 83          | 83          | 83          | 83          | 83          | 77          | 78          | 78          | 78          | 78          |
| Dominica                   | 75          | 75          | 75          | 75          | 76          | 78          | 78          | 78          | 78          | 79          | 72          | 72          | 72          | 72          | 73          |
| Dominican Republic         | 72          | 73          | 73          | 73          | 74          | 74          | 75          | 75          | 75          | 76          | 71          | 71          | 71          | 72          | 72          |
| Grenada                    | 65          | 65          | 65          | 66          | 66          | 66          | 67          | 67          | 68          | 68          | 63          | 63          | 63          | 64          | 64          |
| Guyana                     | 66          | 66          | 66          | 66          | 67          | 68          | 69          | 69          | 69          | 69          | 63          | 63          | 64          | 64          | 64          |
| Haiti                      | 58          | 59          | 59          | 60          | 61          | 60          | 60          | 61          | 62          | 63          | 57          | 57          | 58          | 59          | 59          |
| Jamaica                    | 74          | 74          | 74          | 74          | 74          | 76          | 76          | 76          | 75          | 75          | 72          | 72          | 72          | 72          | 72          |
| Montserrat                 | 71          | 72          | 72          | 73          | 73          | 68          | 70          | 70          | 70          | 71          | 73          | 74          | 75          | 75          | 75          |
| Netherlands Antilles       | 76          | 76          | 76          | 77          | 77          | 78          | 78          | 79          | 79          | 79          | 74          | 74          | 74          | 74          | 74          |
| Puerto Rico                | 78          | 78          | 79          | 79          | 79          | 81          | 82          | 82          | 82          | 82          | 74          | 75          | 75          | 75          | 75          |
| St. Kitts and Nevis        | 72          | 72          | 73          | 73          | 73          | 75          | 75          | 76          | 76          | 76          | 69          | 70          | 70          | 70          | 70          |
| St. Lucia                  | 76          | 76          | 76          | 76          | 77          | 78          | 79          | 79          | 79          | 79          | 73          | 73          | 73          | 74          | 74          |
| St. Vincent and Grenadines | 73          | 73          | 73          | 73          | 74          | 74          | 75          | 75          | 75          | 76          | 71          | 71          | 71          | 72          | 72          |
| Suriname                   | 73          | 73          | 73          | 74          | 74          | 76          | 76          | 76          | 76          | 77          | 70          | 70          | 71          | 71          | 71          |
| Trinidad and Tobago        | 70          | 70          | 71          | 71          | 71          | 73          | 73          | 74          | 74          | 74          | 67          | 67          | 68          | 68          | 68          |
| Turks and Caicos Islands   | 75          | 75          | 75          | 75          | 75          | 77          | 77          | 77          | 78          | 78          | 72          | 73          | 73          | 73          | 73          |
| Virgin Islands (U.S.)      | 79          | 79          | 79          | 79          | 79          | .           | .           | .           | .           | .           | 76          | 76          | 76          | 76          | 76          |
| <b>Caribbean</b>           | <b>72.8</b> | <b>73.1</b> | <b>73.3</b> | <b>73.5</b> | <b>73.7</b> | <b>75.0</b> | <b>75.3</b> | <b>75.5</b> | <b>75.8</b> | <b>76.0</b> | <b>70.6</b> | <b>70.9</b> | <b>71.1</b> | <b>71.3</b> | <b>71.4</b> |
| Costa Rica                 | 77          | 77          | 77          | 77          | 78          | 80          | 80          | 80          | 80          | 80          | 74          | 74          | 75          | 75          | 75          |
| El Salvador                | 71          | 72          | 72          | 72          | 72          | 75          | 75          | 76          | 76          | 76          | 68          | 68          | 68          | 69          | 69          |
| Guatemala                  | 69          | 69          | 70          | 70          | 70          | 71          | 71          | 72          | 72          | 72          | 67          | 68          | 68          | 68          | 69          |
| Honduras                   | 69          | 69          | 69          | 69          | 69          | 71          | 71          | 71          | 71          | 71          | 68          | 68          | 68          | 68          | 68          |
| Nicaragua                  | 70          | 71          | 71          | 71          | 72          | 73          | 73          | 73          | 73          | 74          | 68          | 69          | 69          | 69          | 69          |
| Panama                     | 76          | 76          | 77          | 77          | 77          | 79          | 79          | 80          | 80          | 80          | 73          | 73          | 74          | 74          | 75          |
| <b>Central America</b>     | <b>72.1</b> | <b>72.3</b> | <b>72.6</b> | <b>72.8</b> | <b>73.1</b> | <b>74.6</b> | <b>74.9</b> | <b>75.1</b> | <b>75.3</b> | <b>75.6</b> | <b>69.7</b> | <b>69.9</b> | <b>70.2</b> | <b>70.4</b> | <b>70.7</b> |
| Argentina                  | 76          | 76          | 76          | 76          | 77          | 79          | 79          | 80          | 80          | 80          | 73          | 73          | 73          | 73          | 73          |
| Bolivia                    | 66          | 66          | 66          | 67          | 67          | 68          | 69          | 69          | 69          | 70          | 63          | 63          | 64          | 64          | 64          |
| Brazil                     | 71          | 71          | 71          | 72          | 72          | 75          | 75          | 75          | 76          | 76          | 67          | 68          | 68          | 68          | 68          |
| Chile                      | 77          | 77          | 77          | 77          | 77          | 80          | 80          | 80          | 81          | 81          | 73          | 74          | 74          | 74          | 74          |
| Colombia                   | 72          | 72          | 72          | 73          | 73          | 76          | 76          | 76          | 77          | 77          | 68          | 68          | 68          | 69          | 69          |
| Ecuador                    | 74          | 75          | 75          | 75          | 75          | 77          | 78          | 78          | 78          | 78          | 72          | 72          | 72          | 72          | 72          |
| Paraguay                   | 75          | 75          | 75          | 76          | 76          | 78          | 78          | 78          | 78          | 79          | 72          | 73          | 73          | 73          | 73          |
| Peru                       | 70          | 70          | 70          | 70          | 71          | 71          | 72          | 72          | 72          | 73          | 68          | 68          | 68          | 69          | 69          |
| Uruguay                    | 76          | 76          | 76          | 76          | 76          | 79          | 79          | 79          | 80          | 80          | 72          | 73          | 73          | 73          | 73          |
| Venezuela                  | 73          | 73          | 73          | 74          | 74          | 76          | 76          | 77          | 77          | 77          | 70          | 70          | 70          | 70          | 71          |
| <b>South America</b>       | <b>72.8</b> | <b>73.0</b> | <b>73.2</b> | <b>73.5</b> | <b>73.7</b> | <b>75.9</b> | <b>76.2</b> | <b>76.4</b> | <b>76.7</b> | <b>76.9</b> | <b>69.8</b> | <b>70.0</b> | <b>70.2</b> | <b>70.5</b> | <b>70.7</b> |
| Mexico                     | 75          | 75          | 76          | 76          | 76          | 78          | 78          | 79          | 79          | 79          | 72          | 73          | 73          | 73          | 73          |
| <b>LAC</b>                 | <b>72.7</b> | <b>73.0</b> | <b>73.2</b> | <b>73.5</b> | <b>73.7</b> | <b>75.2</b> | <b>75.5</b> | <b>75.8</b> | <b>76.0</b> | <b>76.3</b> | <b>70.3</b> | <b>70.6</b> | <b>70.8</b> | <b>71.0</b> | <b>71.2</b> |

### 3.4 | Reproductive Health

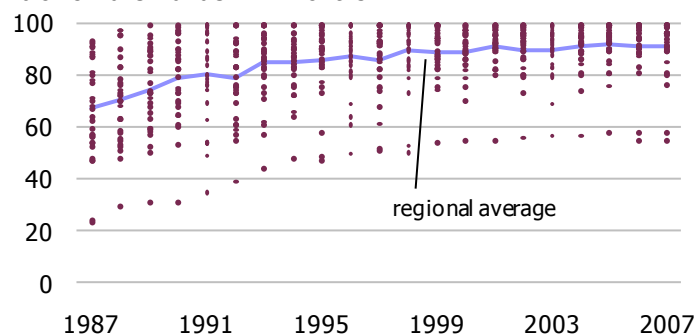
|                            | Total fertility Rate<br>(2008) | Adolescent fertility rate<br>(2007) | Maternal mortality ratio<br>(2005) | Skilled attendant at delivery (%)<br>(2000-2007) | Institutional delivery (%)<br>(2000-2007) | Pregnant women receiving prenatal care (%)<br>Year | Low-birthweight babies (%)<br>Year |
|----------------------------|--------------------------------|-------------------------------------|------------------------------------|--|---|--|------------------------------------|
| Anguilla                   | 1.8                            | .                                   | .                                  | .  | .   | .  | .                                  |
| Antigua and Barbuda        | 2.1                            | .                                   | .                                  | 100.0  | .   | 99.9 (2005)  | 5.3 (2005)                         |
| Aruba                      | 1.9                            | 22.4                                | .                                  | .  | .   | .  | .                                  |
| Bahamas                    | 2.1                            | 53.0                                | 16.0                               | 99.0   | .   | 98.0 (2006)  | 7.0 (1999)                         |
| Barbados                   | 1.7                            | 42.0                                | 16.0                               | 100.0  | .   | 100.0 (2005)                                       | 14.0 (2006)                        |
| Belize                     | 3.4                            | 78.7                                | 52.0                               | 96.0   | 88.0                                      | 94.0 (2006)  | 8.1 (2006)                         |
| Bermuda                    | 2.0                            | .                                   | .                                  | .  | .   | .  | 7.0 (1995)                         |
| British Virgin Islands     | 1.7                            | .                                   | .                                  | .  | .   | .  | .                                  |
| Cayman Islands             | 1.9                            | .                                   | .                                  | .  | .   | .  | .                                  |
| Cuba                       | 1.6                            | 47.0                                | 45.0                               | 100.0  | .   | 100.0 (2007)                                       | 5.2 (2007)                         |
| Dominica                   | 2.1                            | .                                   | .                                  | 99.0   | .   | 100.0 (2005)                                       | 9.4 (2006)                         |
| Dominican Republic         | 2.8                            | 107.6                               | 150.0                              | 98.0   | 98.0                                      | 98.9 (2007)  | 11.3 (2002)                        |
| Grenada                    | 2.3                            | 42.4                                | .                                  | 100.0  | .   | 100.0 (2005)                                       | 9.0 (2005)                         |
| Guyana                     | 2.0                            | 62.7                                | 470.0                              | 83.0   | 83.0                                      | 81.4 (2006)  | 12.6 (2004)                        |
| Haiti                      | 3.9                            | 46.4                                | 670.0                              | 26.0   | 25.0                                      | 84.5 (2006)  | 24.6 (2005)                        |
| Jamaica                    | 2.3                            | 78.3                                | 170.0                              | 97.0   | 94.0                                      | 90.5 (2005)  | 12.1 (2005)                        |
| Montserrat                 | 1.2                            | .                                   | .                                  | .  | .   | .  | .                                  |
| Netherlands Antilles       | 2.0                            | 29.7                                | .                                  | .  | .   | .  | .                                  |
| Puerto Rico                | 1.7                            | 47.4                                | 18.0                               | .  | .   | .  | 14.0 (1999)                        |
| St. Kitts and Nevis        | 2.3                            | .                                   | .                                  | 100.0  | .   | 100.0 (2005)                                       | 9.0 (2004)                         |
| St. Lucia                  | 1.9                            | 60.0                                | .                                  | 100.0  | .   | 99.2 (2005)  | 11.2 (2006)                        |
| St. Vincent and Grenadines | 2.0                            | 63.9                                | .                                  | 100.0  | .   | 95.0 (2005)  | 7.9 (2006)                         |
| Suriname                   | 2.0                            | 39.5                                | 72.0                               | 90.0   | 88.0                                      | 89.9 (2006)  | 12.5 (2000)                        |
| Trinidad and Tobago        | 1.7                            | 34.6                                | 45.0                               | 98.0   | 97.0                                      | 95.7 (2006)  | 18.8 (2006)                        |
| Turks and Caicos Islands   | 3.0                            | .                                   | .                                  | .  | .   | .  | .                                  |
| Virgin Islands (U.S.)      | 1.9                            | 30.6                                | .                                  | .  | .   | .  | 8.5 (1973)                         |
| <b>Caribbean</b>           | <b>2.1</b>                     | <b>52.1</b>                         | <b>156.7</b>                       | <b>92.9</b>                                      | <b>81.9</b>                               | <b>95.4</b>  | <b>10.9</b>                        |
| Costa Rica                 | 2.2                            | 71.3                                | 30.0                               | 99.0   | 94.0                                      | 91.7 (2004)  | 7.1 (2005)                         |
| El Salvador                | 3.0                            | 81.0                                | 170.0                              | 92.0   | 69.0                                      | 86.0 (2003)  | 7.0 (2003)                         |
| Guatemala                  | 3.6                            | 107.2                               | 290.0                              | 41.0   | 42.0                                      | 84.3 (2002)  | 12.0 (2002)                        |
| Honduras                   | 3.4                            | 93.1                                | 280.0                              | 67.0   | 67.0                                      | 91.7 (2006)  | 10.2 (2006)                        |
| Nicaragua                  | 2.6                            | 112.7                               | 170.0                              | 74.0   | 66.0                                      | 90.2 (2006)  | 11.8 (2001)                        |
| Panama                     | 2.6                            | 82.6                                | 130.0                              | 91.0   | 92.0                                      | 72.2 (1998)  | 10.2 (2003)                        |
| <b>Central America</b>     | <b>2.9</b>                     | <b>91.3</b>                         | <b>178.3</b>                       | <b>77.3</b>                                      | <b>71.7</b>                               | <b>86.0</b>  | <b>9.7</b>                         |
| Argentina                  | 2.4                            | 56.9                                | 77.0                               | 99.0   | 99.0                                      | 99.2 (2005)  | 7.1 (2006)                         |
| Bolivia                    | 3.3                            | 78.2                                | 290.0                              | 67.0   | 57.0                                      | 79.1 (2003)  | 7.3 (2003)                         |
| Brazil                     | 2.2                            | 89.3                                | 110.0                              | 88.0   | 97.0                                      | 97.4 (2005)  | 8.1 (2005)                         |
| Chile                      | 2.0                            | 59.6                                | 16.0                               | 100.0  | 100.0                                     | 95.0 (1993)  | 5.5 (2005)                         |
| Colombia                   | 2.5                            | 76.0                                | 130.0                              | 96.0   | 92.0                                      | 93.5 (2005)  | 6.2 (2005)                         |
| Ecuador                    | 2.6                            | 82.8                                | 210.0                              | 99.0   | 74.0                                      | 84.2 (2004)  | 16.1 (1999)                        |
| Paraguay                   | 3.8                            | 72.3                                | 150.0                              | 77.0   | 74.0                                      | 94.2 (2004)  | 9.0 (2004)                         |
| Peru                       | 2.4                            | 60.2                                | 240.0                              | 71.0   | 72.0                                      | 91.0 (2006)  | 10.4 (2006)                        |
| Uruguay                    | 1.9                            | 61.1                                | 20.0                               | 100.0  | .   | 94.0 (1997)  | 8.0 (2002)                         |
| Venezuela                  | 2.5                            | 89.9                                | 57.0                               | 95.0   | 95.0                                      | 94.1 (2000)  | 9.1 (2006)                         |
| <b>South America</b>       | <b>2.6</b>                     | <b>72.6</b>                         | <b>130.0</b>                       | <b>89.2</b>                                      | <b>84.4</b>                               | <b>92.2</b>  | <b>8.7</b>                         |
| Mexico                     | 2.4                            | 64.8                                | 60.0                               | 93.0   | 86.0                                      | 86.1 (1995)  | 8.4 (2005)                         |
| <b>LAC</b>                 | <b>2.3</b>                     | <b>65.4</b>                         | <b>148.4</b>                       | <b>88.9</b>                                      | <b>80.4</b>                               | <b>92.5</b>  | <b>10.0</b>                        |

### 3.5 | Disease Prevention percent of children under 12 months

|                            | Measles Immunization |           |           |           |           |          | DPT Immunization |           |           |           |           |
|----------------------------|----------------------|-----------|-----------|-----------|-----------|----------|------------------|-----------|-----------|-----------|-----------|
|                            | 1990                 | 1995      | 2000      | 2005      | 2007      |          | 1990             | 1995      | 2000      | 2005      | 2007      |
| Antigua and Barbuda        | 89                   | 93        | 95        | 99        | 99        |          | 99               | 99        | 95        | 99        | 99        |
| Bahamas                    | 86                   | 90        | 93        | 85        | 96        |          | 86               | 87        | 99        | 93        | 95        |
| Barbados                   | 87                   | 92        | 94        | 93        | 75        |          | 91               | 93        | 93        | 92        | 93        |
| Belize                     | 86                   | 83        | 95        | 95        | 96        |          | 91               | 82        | 89        | 96        | 96        |
| Dominica                   | 88                   | 99        | 99        | 98        | 96        |          | 92               | 99        | 99        | 98        | 96        |
| Dominican Republic         | 96                   | 96        | 88        | 99        | 96        |          | 69               | 72        | 68        | 79        | 79        |
| Grenada                    | 85                   | 88        | 92        | 99        | 98        |          | 80               | 95        | 97        | 99        | 99        |
| Guyana                     | 73                   | 77        | 86        | 92        | 96        |          | 83               | 86        | 88        | 93        | 94        |
| Haiti                      | 31                   | 49        | 55        | 58        | 58        |          | 41               | 42        | 45        | 53        | 53        |
| Jamaica                    | 74                   | 90        | 88        | 84        | 76        |          | 86               | 90        | 86        | 88        | 85        |
| St. Kitts and Nevis        | 99                   | 99        | 99        | 99        | 99        |          | 99               | 99        | 99        | 99        | 99        |
| St. Lucia                  | 82                   | 94        | 88        | 94        | 94        |          | 89               | 98        | 70        | 95        | 99        |
| St. Vincent and Grenadines | 96                   | 99        | 96        | 97        | 99        |          | 98               | 97        | 99        | 99        | 99        |
| Suriname                   | 65                   | 85        | 70        | 99        | 85        |          | 83               | 84        | 71        | 72        | 84        |
| Trinidad and Tobago        | 70                   | 84        | 90        | 93        | 91        |          | 82               | 89        | 90        | 95        | 88        |
| <b>Caribbean</b>           | <b>80</b>            | <b>88</b> | <b>89</b> | <b>92</b> | <b>90</b> | <b> </b> | <b>85</b>        | <b>87</b> | <b>86</b> | <b>90</b> | <b>91</b> |
| Costa Rica                 | 90                   | 91        | 82        | 89        | 90        |          | 95               | 85        | 88        | 91        | 89        |
| El Salvador                | 98                   | 93        | 97        | 99        | 98        |          | 80               | 99        | 99        | 89        | 96        |
| Guatemala                  | 68                   | 83        | 86        | 95        | 93        |          | 66               | 77        | 84        | 81        | 82        |
| Honduras                   | 90                   | 89        | 98        | 92        | 89        |          | 84               | 94        | 95        | 91        | 86        |
| Nicaragua                  | 82                   | 85        | 86        | 96        | 99        |          | 66               | 80        | 83        | 86        | 87        |
| Panama                     | 73                   | 84        | 97        | 99        | 89        |          | 86               | 86        | 98        | 88        | 88        |
| <b>Central America</b>     | <b>84</b>            | <b>88</b> | <b>91</b> | <b>95</b> | <b>93</b> | <b> </b> | <b>80</b>        | <b>87</b> | <b>91</b> | <b>88</b> | <b>88</b> |
| Argentina                  | 93                   | 99        | 91        | 99        | 99        |          | 87               | 85        | 83        | 94        | 96        |
| Bolivia                    | 53                   | 58        | 79        | 81        | 81        |          | 41               | 64        | 80        | 81        | 81        |
| Brazil                     | 78                   | 87        | 99        | 99        | 99        |          | 66               | 81        | 98        | 96        | 98        |
| Chile                      | 97                   | 97        | 97        | 90        | 91        |          | 95               | 94        | 91        | 91        | 94        |
| Colombia                   | 82                   | 95        | 75        | 89        | 95        |          | 88               | 86        | 74        | 87        | 93        |
| Ecuador                    | 60                   | 73        | 84        | 93        | 99        |          | 68               | 74        | 89        | 94        | 99        |
| Paraguay                   | 69                   | 75        | 92        | 90        | 80        |          | 67               | 68        | 68        | 75        | 66        |
| Peru                       | 64                   | 98        | 97        | 80        | 99        |          | 72               | 90        | 91        | 89        | 80        |
| Uruguay                    | 97                   | 90        | 89        | 95        | 96        |          | 97               | 91        | 90        | 96        | 94        |
| Venezuela                  | 61                   | 47        | 84        | 76        | 55        |          | 63               | 68        | 77        | 87        | 71        |
| <b>South America</b>       | <b>75</b>            | <b>82</b> | <b>89</b> | <b>89</b> | <b>89</b> | <b> </b> | <b>74</b>        | <b>80</b> | <b>84</b> | <b>89</b> | <b>87</b> |
| Mexico                     | 75                   | 90        | 96        | 96        | 96        |          | 53               | 91        | 97        | 98        | 98        |
| <b>LAC</b>                 | <b>79</b>            | <b>86</b> | <b>89</b> | <b>92</b> | <b>91</b> | <b> </b> | <b>79</b>        | <b>85</b> | <b>87</b> | <b>90</b> | <b>89</b> |

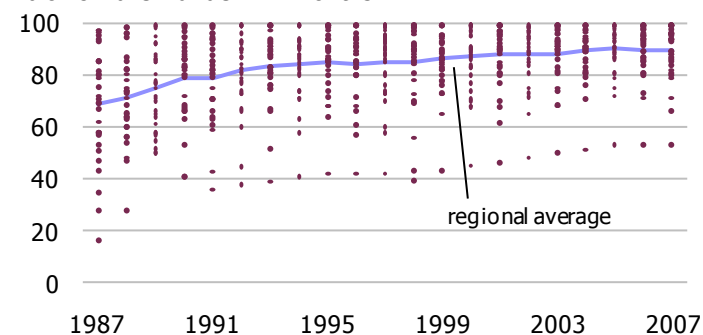
#### Measles Immunization Rate in LAC

% of children under 12 months



#### DPT Immunization Rate in LAC

% of children under 12 months



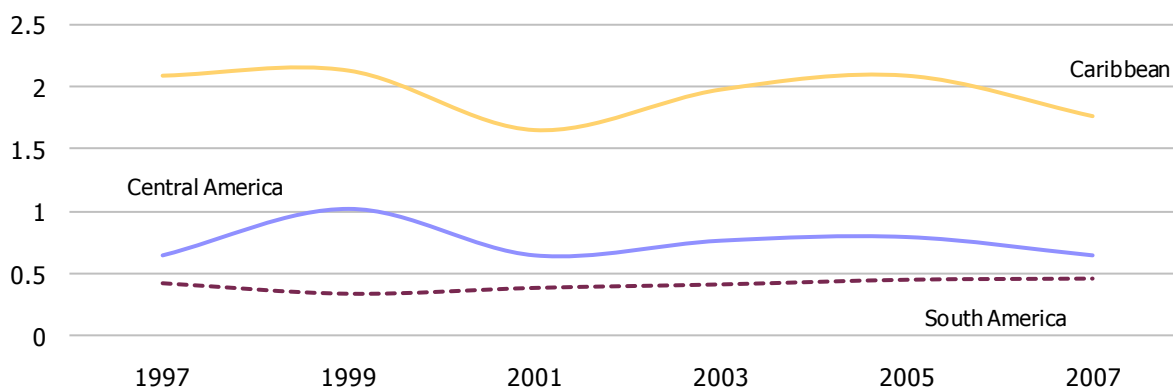
### 3.6 | HIV/AIDS Related Deaths

|                        | AIDS Deaths<br>Adults & Children |               |               |               |               |
|------------------------|----------------------------------|---------------|---------------|---------------|---------------|
|                        | 1999                             | 2001          | 2003          | 2005          | 2007          |
| Bahamas                | 500                              | 1,000         | 200           | .             | 200           |
| Barbados               | 130                              | 200           | 200           | .             | 100           |
| Belize                 | 170                              | 200           | 200           | .             | 200           |
| Dominican Republic     | 4,900                            | 4,800         | 6,900         | 6,700         | 3,900         |
| Guyana                 | 900                              | 1,300         | 1,300         | 1,200         | 1,000         |
| Haiti                  | 23,000                           | 7,500         | 17,000        | 16,000        | 7,500         |
| Jamaica                | 650                              | 1,200         | 1,300         | 1,300         | 1,400         |
| Suriname               | 210                              | 200           | 500           | .             | .             |
| Trinidad and Tobago    | 530                              | 1,000         | 1,700         | 1,900         | 1,000         |
| <b>Caribbean</b>       | <b>30,990</b>                    | <b>17,400</b> | <b>29,300</b> | <b>27,100</b> | <b>15,300</b> |
| Costa Rica             | 750                              | .             | 900           | .             | 200           |
| El Salvador            | 1,300                            | 1,200         | 2,800         | 2,500         | 1,700         |
| Guatemala              | 3,600                            | 2,900         | 2,100         | 2,700         | 3,900         |
| Honduras               | 4,200                            | 3,200         | 3,500         | 3,700         | 1,800         |
| Nicaragua              | 360                              | 200           | 500           | .             | 500           |
| Panama                 | 1,200                            | 1,000         | 500           | .             | 1,000         |
| <b>Central America</b> | <b>11,410</b>                    | <b>8,500</b>  | <b>10,300</b> | <b>8,900</b>  | <b>9,100</b>  |
| Argentina              | 1,800                            | 3,700         | 3,100         | 4,300         | 5,400         |
| Bolivia                | 380                              | .             | 500           | .             | 500           |
| Brazil                 | 18,000                           | 9,400         | 13,000        | 14,000        | 15,000        |
| Chile                  | 1,000                            | 1,000         | 1,400         | .             | 1,000         |
| Colombia               | 1,700                            | 5,800         | 6,800         | 8,200         | 9,800         |
| Ecuador                | 1,400                            | 1,000         | 1,100         | 1,600         | 1,200         |
| Paraguay               | 220                              | 500           | 600           | .             | 1,000         |
| Peru                   | 4,100                            | 2,900         | 5,100         | 5,600         | 3,300         |
| Uruguay                | 150                              | 500           | 500           | .             | 500           |
| Venezuela              | 2,000                            | .             | 4,300         | 6,100         | .             |
| <b>South America</b>   | <b>30,750</b>                    | <b>24,800</b> | <b>36,400</b> | <b>39,800</b> | <b>37,700</b> |
| Mexico                 | 4,700                            | 9,900         | 5,500         | 6,200         | 11,000        |
| <b>LAC</b>             | <b>77,850</b>                    | <b>60,600</b> | <b>81,500</b> | <b>82,000</b> | <b>73,100</b> |

### 3.7 | Estimated Number of People Living with HIV/AIDS

|                        | Adults & Children |                  | Adults (15-49)   |                  | Adult Rate (%) |            | Women (15-49)  |                | Children     |
|------------------------|-------------------|------------------|------------------|------------------|----------------|------------|----------------|----------------|--------------|
|                        | 2005              | 2007             | 2001             | 2003             | 2005           | 2007       | 2001           | 2003           | latest year  |
| Bahamas                | 6,800             | 6,200            | 4,900            | 5,200            | 3.3            | 3.0        | 2,500          | 2,500          | 200 (2007)   |
| Barbados               | 2,700             | 2,200            | 2,500            | 2,500            | 1.5            | 1.2        | 800            | 800            | 200 (2003)   |
| Belize                 | 3,700             | 3,600            | 2,800            | 3,500            | 2.5            | 2.1        | 1,000          | 1,300          | 200 (2007)   |
| Dominican Republic     | 66,000            | 62,000           | 87,000           | 85,000           | 1.1            | 1.1        | 23,000         | 23,000         | 2,700 (2007) |
| Guyana                 | 12,000            | 13,000           | 11,000           | 11,000           | 2.4            | 2.5        | 6,100          | 6,100          | 1,000 (2007) |
| Haiti                  | 190,000           | 120,000          | 240,000          | 260,000          | 3.8            | 2.2        | 140,000        | 150,000        | 6,800 (2007) |
| Jamaica                | 25,000            | 27,000           | 14,000           | 21,000           | 1.5            | 1.6        | 7,200          | 10,000         | 500 (2003)   |
| Suriname               | 5,200             | 6,800            | 4,000            | 5,000            | 1.9            | 2.4        | 1,300          | 1,700          | 200 (2007)   |
| Trinidad and Tobago    | 27,000            | 14,000           | 26,000           | 28,000           | 2.6            | 1.5        | 13,000         | 14,000         | 700 (2003)   |
| <b>Caribbean</b>       | <b>338,400</b>    | <b>254,800</b>   | <b>392,200</b>   | <b>421,200</b>   | <b>2.3</b>     | <b>2.0</b> | <b>194,900</b> | <b>209,400</b> |              |
| Costa Rica             | 7,400             | 9,700            | 11,000           | 12,000           | 0.3            | 0.4        | 3,500          | 4,000          | .            |
| El Salvador            | 36,000            | 35,000           | 24,000           | 28,000           | 0.9            | 0.8        | 7,700          | 9,600          | .            |
| Guatemala              | 61,000            | 59,000           | 65,000           | 74,000           | 0.9            | 0.8        | 27,000         | 31,000         | .            |
| Honduras               | 63,000            | 28,000           | 48,000           | 59,000           | 1.5            | 0.7        | 27,000         | 33,000         | 1,600 (2007) |
| Nicaragua              | 7,300             | 7,700            | 5,500            | 6,200            | 0.2            | 0.2        | 1,800          | 2,100          | .            |
| Panama                 | 17,000            | 20,000           | 11,000           | 15,000           | 0.9            | 1.0        | 4,100          | 6,200          | .            |
| <b>Central America</b> | <b>191,700</b>    | <b>159,400</b>   | <b>164,500</b>   | <b>194,200</b>   | <b>0.8</b>     | <b>0.7</b> | <b>71,100</b>  | <b>85,900</b>  |              |
| Argentina              | 130,000           | 120,000          | 120,000          | 120,000          | 0.6            | 0.5        | 23,000         | 24,000         | .            |
| Bolivia                | 7,000             | 8,100            | 4,000            | 4,800            | 0.1            | 0.2        | 1,100          | 1,300          | .            |
| Brazil                 | 620,000           | 730,000          | 620,000          | 650,000          | 0.5            | 0.6        | 230,000        | 240,000        | .            |
| Chile                  | 28,000            | 31,000           | 25,000           | 26,000           | 0.3            | 0.3        | 8,000          | 8,700          | .            |
| Colombia               | 160,000           | 170,000          | 120,000          | 180,000          | 0.6            | 0.6        | 40,000         | 62,000         | .            |
| Ecuador                | 23,000            | 26,000           | 19,000           | 20,000           | 0.3            | 0.3        | 6,200          | 6,800          | .            |
| Paraguay               | 13,000            | 21,000           | 10,000           | 15,000           | 0.4            | 0.6        | 2,700          | 3,900          | .            |
| Peru                   | 93,000            | 76,000           | 51,000           | 80,000           | 0.6            | 0.5        | 16,000         | 27,000         | .            |
| Uruguay                | 9,600             | 10,000           | 5,500            | 5,800            | 0.5            | 0.6        | 1,800          | 1,900          | .            |
| Venezuela              | 110,000           | .                | 71,000           | 100,000          | 0.7            | .          | 23,000         | 32,000         | .            |
| <b>South America</b>   | <b>1,193,600</b>  | <b>1,192,100</b> | <b>1,045,500</b> | <b>1,201,600</b> | <b>0.5</b>     | <b>0.5</b> | <b>351,800</b> | <b>407,600</b> |              |
| Mexico                 | 180,000           | 200,000          | 150,000          | 160,000          | 0.3            | 0.3        | 49,000         | 53,000         | .            |
| <b>LAC</b>             | <b>1,903,700</b>  | <b>1,806,300</b> | <b>1,752,200</b> | <b>1,977,000</b> | <b>1.2</b>     | <b>1.0</b> | <b>666,800</b> | <b>755,900</b> |              |

### HIV/ AIDS Adult Prevalence Rate



## Sources and Technical Notes – Health

### Figures

#### Prevalence of Undernourishment

**Source** World Bank, *World Development Indicators* (online) as of May, 2009.

**Definition** Population below minimum level of dietary energy consumption (also referred to as prevalence of undernourishment) shows the percentage of the population whose food intake is insufficient to meet dietary energy requirements continuously. Data showing as 2.5 signifies a prevalence of undernourishment below 2.5%.

**Notes** Regional groupings are un-weighted averages.

#### Health Expenditures

**Source** World Bank, *World Development Indicators* (online) as of May, 2009.

**Definitions** *Public health expenditures* consist of recurrent and capital spending from government (central and local) budgets, external borrowings and grants (including donations from international agencies and nongovernmental organizations), and social (or compulsory) health insurance funds. *Private health expenditures* include direct household (out-of-pocket) spending, private insurance, charitable donations, and direct service payments by private corporations.

**Note** Regional groupings are quoted from source.

### Table 3.1

#### Infant Mortality Rate

**Source** US Bureau of the Census, International Database, (online) as of February, 2009, Washington, DC.

**Definition** *Infant mortality rate* the probability of dying between birth and one year of age. It is expressed as the number of deaths under one year of age per 1,000 live births per annum.

### Table 3.2

#### Under-5 Mortality

**Source** UN World Health Organization (online) as of June, 2009.

**Definitions** Probabilities are expressed as a rate per 1,000. *Under-5 mortality rate* the probability that a newborn baby will die before reaching age five if subject to current age-specific mortality rates. *Causes of Deaths (%) among children under five* displays the underlying cause of death as entered on medical certificates of cause of death in countries with civil (vital) registration system. In countries with incomplete or no civil

registration, causes of death are those reported as such in epidemiological studies that use verbal autopsy algorithms to establish causes of death.

**Note** Each edition of the LAC Databook presents the most up-to-date data published by its sources. Due to the Census Bureau's dropping of data on Under-5 Mortality Rates from its International Database between the previous and current editions of the LAC Databook, a change in primary source was required. As a result of the change in source to the World Health Organization, the most recent year available for this data is now 2006.

### Table 3.3

#### Life Expectancy at Birth

**Source** US Bureau of the Census, International Database, (online) as of February 2009, Washington, DC.

**Definition** *Life expectancy at birth* is the average number of years a person can expect to live at current levels of mortality.

### Table 3.4

#### Reproductive Health

**Sources** US Bureau of the Census, International Database, (online) as of February 2009, Washington, DC, World Bank, *World Development Indicators* (online) as of May, 2009 and UNICEF, *State of the World's Children* (online) as of January, 2009.

**Definitions** *Total fertility rate (2008)* is the average number of children a woman would bear in her lifetime at current age-specific fertility rates. *Adolescent fertility rate (2007)* is the number of births per 1,000 women ages 15-19. *Maternal mortality ratio (2005)* is the number of women who die during pregnancy and childbirth, per 100,000 live births. The data are estimated with a regression model using information on fertility, birth attendants, and HIV prevalence. *Skilled Attendant at Delivery* is the percentage of births attended by skilled health personnel (doctors, nurses or midwives). Data refer to the most recent year available during the period specified. *Institutional Deliveries* is the percentage of births taking place in health facilities. *Pregnant women receiving prenatal care* is the percentage of women attended at least once during pregnancy by skilled health personnel for reasons related to pregnancy. *Low-birthweight babies* are newborns weighing less than 2,500 grams, with the measurement taken within the first hours of life, before significant postnatal weight loss has occurred.

### Table 3.5

#### Disease Prevention

**Source** World Bank, *World Development Indicators* (online) as of May, 2009.

**Definitions** Immunization rates are the percentage of children aged 12-23 months who received respective vaccinations before one year of age. Children are considered to have received adequate *Measles immunization* after receiving one dose of vaccine; and *DPT immunization* (diphtheria, pertussis [or whooping cough], and tetanus) is considered adequate after three doses of vaccine.

**Note** Figures depict all countries' immunization rates and the average rate for each year among all countries reported in the data table.

### Tables 3.6 - 3.7

#### HIV/AIDS Related Deaths and Estimated Number of People Living with HIV/AIDS

**Sources** United Nations Joint Program on HIV/AIDS (UNAIDS) and the World Health Organization (WHO), *Report on the Global HIV/AIDS Epidemic 2007*.

**Definitions** *AIDS deaths Adults & Children* is the estimated number of adults and children who died of AIDS. Owing to under-reporting of deaths, these fatality rates are lower than the true values. *Estimated number of people living with HIV/AIDS* include all people with HIV infection, whether or not they have developed symptoms of AIDS, alive at the end of 1997 and 2003. *Adults (15-49)* is the estimated number of adults living with HIV/AIDS includes all people with HIV infection, whether or not they have developed symptoms of AIDS, that are alive at the end of the year of reporting. *Adult rate* is the estimated number of adults living with HIV/AIDS divided by the adult population. *Women (15-49)* is the estimated number of women (aged 15-49) living with HIV/AIDS. *Children* is the estimated number of children (under age 15) living with HIV/AIDS.

**Notes** The global HIV epidemic currently involves two viruses: *HIV-1 and HIV-2*. Data in this table refer to both viruses. HIV-1 is the dominant type worldwide. HIV-2 is found principally in West Africa, but cases have been reported in East Africa, Europe, Asia and Latin America. While the means of transmission for the two viruses are the same, HIV-2 appears to be less easily transmitted than HIV-1 and the progression from HIV-2 infection to AIDS appears to be slower than that for HIV-1. *AIDS* is a late-stage infection characterized by a severely weakened immune system that can no longer ward off life-threatening infections and cancers. Figure depicts the average prevalence rate of HIV/AIDS amongst the regions within LAC, which are displayed in table.